

Kevin M. Finn, P.E., Inc.
 815 Waterbury Park Drive
 Elkhart, IN 46517
 MD PE Lic. # 21530
 MD Firm # 07-49471

MOBU 20 VERSION 4



DRAWING INDEX	
SHEET	DESCRIPTION
CVR	COVER
A1	ISO VIEW
A2	PARTS LIST
A3	POST CONNECTION DETAILS
A4	DRAINAGE PIPE DETAILS
A5	TRIM AND PANEL HARDWARE DETAILS
A6	HVAC HARDWARE DETAILS
A7	FLOOR PLAN
A8	CROSS SECTION
E1	ELECTRICAL LAYOUT AND PANEL
FND1	FOUNDATION REACTIONS
R1	ROOF ASSEMBLY
R2	ROOF ASSEMBLY 2
R3	ROOF ASSEMBLY 3
R4	END TOP RAIL
R5	SIDE TOP RAIL
R6	ROOF CROSS MEMBERS
R7	WIDE ROOF CROSS MEMBERS
R8	ROOF COVER END
R9	ROOF CROSS MEMBER GUSSET
R10	ROOF TOP RAIL GUSSET
R11	ROOF PITCH TUBE
R12	CEILING SHEET SUPPORT ANGLE
R13	ROOF COVER
F1	FLOOR ASSEMBLY
F2	FLOOR ASSEMBLY 2
F3	FLOOR ASSEMBLY 3
F4	FLOOR ASSEMBLY 4
F5	FLOOR CROSS SECTION
F6	SIDE BOTTOM RAIL
F7	END BOTTOM RAIL
F8	FORK POCKET
F9	FLOOR CROSS MEMBER
F10	WIDENED FLOOR CROSS MEMBER
F11	UNDER PANEL TRIM 1
F12	UNDER PANEL TRIM 2
F13	FORK POCKET PARTS
F14	CROSS MEMBER SUPPORT PARTS
C1	CORNER POST ASSEMBLY
C2	CORNER POST PROFILE
C3	CORNER POST PARTS
C4	BOTTOM LEFT CORNER CASTING
C5	BOTTOM RIGHT CORNER CASTING
C6	TOP LEFT CORNER CASTING
C7	TOP LEFT CORNER CAST SECTION
C8	TOP RIGHT CORNER CASTING
C9	TOP RIGHT CORNER CAST SECTION
C10	TOP CORNER CASTING PARTS
P1	PANEL 45A
P2	PANEL 42B
P3	PANEL 45C
P4	PANEL 45D
P5	PANEL 42E
P6	PANEL 45W

DESIGN CRITERIA

FLOOR LIVE LOAD.....	100 PSF
ROOF LIVE LOAD.....	20 PSF
GROUND SNOW LOAD.....	85 PSF
ROOF SNOW LOAD.....	59 PSF
RISK CATEGORY.....	II
BASIC WIND SPEED.....	150 MPH
WIND EXPOSURE.....	C
SEISMIC DESIGN CATEGORY.....	C
MAPPED SPECTRAL ACCELERATIONS.....	Ss = 0.552, S1 = .127
SITE CLASS.....	D
BASIC SEISMIC FORCE RESISTING SYSTEM.....	ORDINARY STEEL MOMENT FRAME
RESPONSE MODIFICATION FACTOR.....	R = 3.0
USE & OCCUPANCY CLASSIFICATION.....	B
CONST TYPE.....	II-B
BUILDING AREA.....	135 SQUARE FEET
SETBACK.....	GREATER THAN 10 FEET TO A COMMON OR ASSUMED PROPERTY LINE
OCCUPANT LOAD.....	2
FLOOR INSULATION.....	R19
ROOF INSULATION.....	R24 IN ROOF, R8 PANEL
WALL PANELS.....	U= .037

MARYLAND DESIGN CODES:
 2018 INTERNATIONAL BUILDING CODE
 2018 INTERNATIONAL MECHANICAL CODE
 2017 NATIONAL ELECTRICAL CODE
 2018 INTERNATIONAL ENERGY CONSERVATION CODE
 MARYLAND ACCESSIBILITY STANDARDS

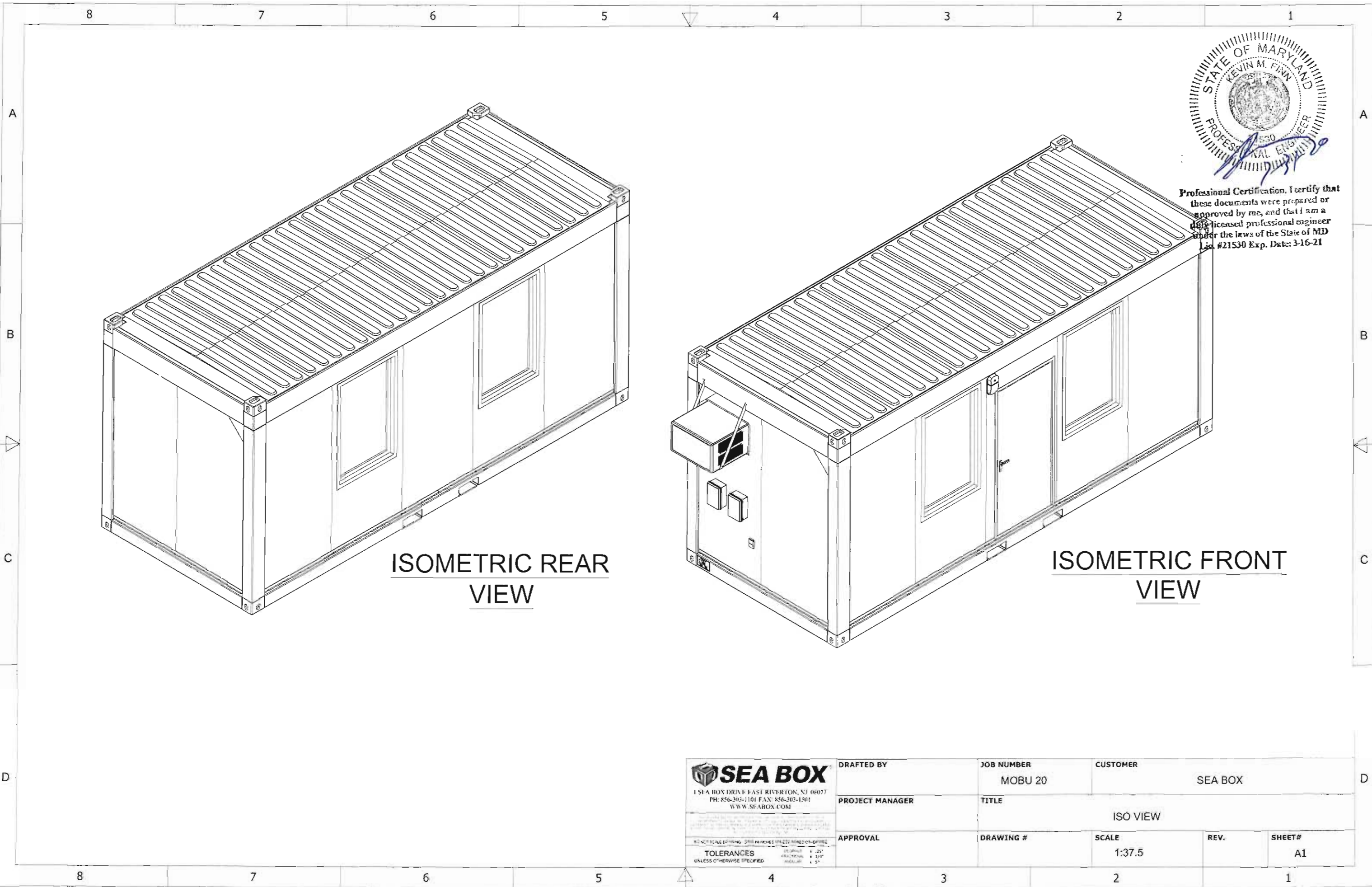
ELECTRICAL NOTES

1.1	ALL ELECTRICAL WORK SHALL BE PERFORMED IN ACCORDANCE WITH GOVERNING EDITION OF THE NATIONAL ELECTRICAL CODE (NEC).
1.2	ALL ELECTRICAL EQUIPMENT SHALL BE NEW AND INSTALLED ACCORDING TO MANUFACTURER'S SPECIFICATION.
1.3	UNLESS OTHERWISE SPECIFIED, ALL WIRES SHALL BE COPPER, STRANDED, THHN OR THWN.
1.4	ON COMPLETION OF ALL ELECTRICAL WORK, THE ENTIRE WIRING SYSTEM SHALL BE FREE FROM GROUND FAULTS, SHORT CIRCUITS, OPENS, OVERLOADS AND IMPROPER VOLTAGES.
1.5	ALL DEVICES AND EQUIPMENTS SHALL BE SUCCESSFULLY TESTED.
1.6	ALL DISTRIBUTION PANELS, DEVICES AND EQUIPMENTS SHALL BE PROPERLY LABELED.

GENERAL NOTES

2.1	THIS IS A STOCK UNIT AND DOES NOT CONTAIN PLUMBING FACILITIES. ACCESSIBLE RESTROOM FACILITIES SHALL BE PROVIDED ON THE SAME PROPERTY WITHIN 500 FEET TO ACCOMMODATE THE OCCUPANT LOAD OF THIS MODULAR BUILDING. THE RESTROOM FACILITY SHALL BE ADA COMPLIANT. A SITE PLAN WILL BE SUBMITTED TO THE LOCAL CODE OFFICAL SHOWING LOCATION AND DISTANCE TO RESTROOM FACILITIES.
2.2	ALL PENETRATIONS AND OPENINGS IN THE BUILDING ENVELOPE SHALL BE SEALED. THE SEALANT SHALL BE CAULKING OR A CLOSED CELL GASKETING SYSTEM.
2.3	SEE A7 FOR DECAL AND DATE PLATE LOCATIONS.
2.4	THE LOCAL BUILDING OFFICIAL WILL BE CONTACTED TO ENSURE BUILDING IS NOT PLACED WHERE IT DOESN'T MEET THE DESIGN CRITERIA FOR THAT AREA. THIS BUILDING SHALL NOT BE INSTALLED IN LOCATIONS WITH HIGHER DESIGN LOAD THAN SPECIFIED IN THIS PACKAGE AND AS APPROVED.
2.5	OPENABLE AREA TO THE OUTDOORS IS 31% OF THE FLOOR SPACE
2.6	THE NET GLAZED ARE IS 32% OF THE FLOOR SPACE
2.7	THIS IS A MODULAR BUILDING AND HAS NO KNOWN PHYSICAL INSTALLATION ADDRESS AT THE TIME OF CONSTRUCTION
2.8	MAXIMUM TRAVEL DISTANCE TO AN EXIT IS 15'
2.9	WALL PANELS MANUFACTURED BY PAN URANIA. 100MM THICK WITH ROCKWOOL CORE, 80KG/M3 DENSITY. 25GA INTERIOR AND EXTERIOR STEEL SKIN, FY = 46 KSI.
2.10	CEILING PANELS MANUFACTURED BY PAN URANIA. 50MM THICK WITH ROCKWOOL CORE, 80KG/M3 DENSITY. 25GA INTERIOR AND EXTERIOR STEEL SKIN, FY = 46 KSI.
2.11	THIS IS A STOCK UNIT WITH NO KNOWN ADDRESS AT TIME OF CONSTRUCTION. LOCAL BUILDING OFFICIAL WILL BE CONTACTED PRIOR TO PLACEMENT TO CONFIRM DESIGN LOADS MEET JURISDICTION CRITERIA.

SEA BOX		DRAFTED BY	JOB NUMBER	CUSTOMER
1 ST BOX DRIVE EAST RIVINGTON, NJ 08077 PH 856-303-1101 FAX 856-303-1501 WWW.SEA-BOX.COM			MOBU 20	SEA BOX
TOLERANCES UNLESS OTHERWISE SPECIFIED		PROJECT MANAGER	TITLE	
DIMENSIONS UNLESS OTHERWISE SPECIFIED			MOBU 20 V4 COVER	
APPROVAL		DRAWING #	SCALE	REV.
				SHEET #
				CVR



Professional Certification. I certify that these documents were prepared or approved by me, and that I am a duly licensed professional engineer under the laws of the State of MD Lic. #21530 Exp. Date: 3-16-21

ISOMETRIC REAR VIEW

ISOMETRIC FRONT VIEW


<p>SEA BOX 1 SEA BOX DRIVE EAST RIVERTON, NJ 08077 PH: 856-303-1101 FAX: 856-303-1501 WWW.SEABOX.COM</p> <p><small>DO NOT SCALE DIMENSIONS UNLESS OTHERWISE SPECIFIED</small></p> <p>TOLERANCES UNLESS OTHERWISE SPECIFIED</p> <p>FINISHES AS SHOWN AS NOTED AS PER SPEC</p>	DRAFTED BY	JOB NUMBER MOBU 20	CUSTOMER SEA BOX		
	PROJECT MANAGER	TITLE	ISO VIEW		
	APPROVAL	DRAWING #	SCALE 1:37.5	REV.	SHEET# A1

LIST OF PARTS FOR 1 MOBU UNIT

MOBU FRAME PARTS							
FIND#	DESCRIPTION	QTY 1 MOBU	PART#	MATERIAL	REV	SPECIFICATIONS	NOTES
1	20' MOBU FLOOR ASSEMBLY	1	9923-F	MULTIPLE MATERIALS	10		
2	20' MOBU ROOF ASSEMBLY	1	9923-R	MULTIPLE MATERIALS	12		
3	20' MOBU CORNER POSTS	4	9923-P	MULTIPLE MATERIALS	12		
4	M14-2.0 X 45mm SOCKET CAP SCREW Class 12.9 with thread locking patch	48	EPN-0024563	ZINC PLATED STEEL		DIN 912, ISO 4762	added thread locking patch and changed from 35mm to 45mm
5	M14 WASHER CLASS 12.9 (15mm ID, 28mm OD)	48	EPN-0024564	ZINC PLATED STEEL		DIN 125	
6	PVC PIPE (50mm O.D. 46mm I.D.) 2565mm L	4	9923-P-4	PVC	3	ASTM F2158	
7	UNDER PANEL TRIM 1	4	9923-F-7-1	SPA-H	4		
8	UNDER PANEL TRIM 2	2	9923-F-7-2	SPA-H	4		
9	CORNER GUSSET	4	9923-G	SPA-H	5		
10	M6 x 1mm Thread x 20mm, Type F Thread cutting screw, Torx, Pan Head, with thread locking patch	24	EPN-0024565	ZINC PLATED STEEL		ASME B18.6.3	added thread locking patch
PANEL HARDWARE							
FIND#	DESCRIPTION	QTY 1 MOBU	PART#	MATERIAL	REV		
11	M6 x 1mm Thread X 75mm, Type F Thread-Cutting Flat Head Torx Screw	24	EPN-0024566	Black Phosphate Steel		ASME B18.6.3	
12	M8 x 1.25mm Thread X 115mm Type F Thread cutting screw, Torx, Pan Head	32	EPN-0024533	Black Phosphate Steel		ASME B18.6.3	REFERENCE DRAWING EPN-0024533
13	M8 x 1.25mm Thread X 35mm, Flange Head Cap Screw, with thread locking patch	20	EPN-0024567	18-8 STAINLESS STEEL		DIN 933	added thread locking patch
MISCELLANEOUS PARTS							
FIND#	DESCRIPTION	QTY 1 MOBU	PART#	MATERIAL	REV		
14	100mm WIDE ROLL OF 60mm MINERALWOOL INSULATION 15m lengths	2	EPN-0024574	MINERALWOOL		ASTM C665, ASTM E84, ASTM E136, ASTM C167	
15	Clear, %100 Premium All-Purpose Silicone Sealant (10 Oz. Tube)	1	EPN-0024575	SILICONE		ASTM C920, class 50	added after quote
16	MOBU DATA PLATE	1	EPN-0024551	ALUMINUM			added after quote
TRIM PACKAGE							
FIND#	DESCRIPTION	QTY 1 MOBU	PART#	MATERIAL	REV		
17	CORNER TRIM LENGTH 2324mm	4	EPN-0024399	PVC	0	ISO 527	corrected after quote
18	BASE TRIM LENGTH 2873mm	8	EPN-0024406	PVC	0	ISO 527	corrected after quote
19	BASE TRIM LENGTH 2155mm	4	EPN-0024400	PVC	0	ISO 527	corrected after quote
20	BASE TRIM END CAP	2	EPN-0024401	PVC	0	ISO 527	corrected after quote
21	M4, 20mm Long, Flat Head Drilling Screws for Metal, Zinc-Plated Steel	150	EPN-0024577	ZINC PLATED STEEL		ASME B18.6.3	must penetrate .6mm Steel sheet without pre-drilling
MOBU AC mount hardware							
FIND#	DESCRIPTION	QTY 1 MOBU	PART#	MATERIAL	REV		
23	Nylon-Insert Locknut, M6 x 1mm Thread Size	2	EPN-0024578	18-8 STAINLESS STEEL		DIN 985	changed to Nylon-Insert Locknut
24	M6 Stainless Steel Washer	2	EPN-003228	18-8 STAINLESS STEEL		DIN 125	
25	M6 Stainless Steel Split Lock Washer	2	EPN-0024579	18-8 STAINLESS STEEL		DIN 127B	
26	M6 x 1mm Thread x 20mm, Type F Thread cutting screw, Torx, Pan Head, with thread locking patch	2	EPN-0024565	ZINC PLATED STEEL		ASME B18.6.3	added thread locking patch
27	M6 x 1mm Thread X 20mm, Stainless Steel Hex Head Cap Screw	2	EPN-0024580	18-8 STAINLESS STEEL		DIN 933	
28	M6, 25mm Long, STAINLESS STEEL DRILLING SCREW FOR METAL	5	EPN-0024581	410 STAINLESS STEEL		ASME B18.6.3	must penetrate 1mm Steel sheet without pre-drilling
29	M5 SS FENDER WASHER (25mm OD)	2	EPN-0024582	18-8 STAINLESS STEEL		DIN 125	
30	AC BRACKET LEFT	1	EPN-0017331	SPA-H	4		added after quote
31	AC BRACKET RIGHT	1	EPN-0017332	SPA-H	4		added after quote

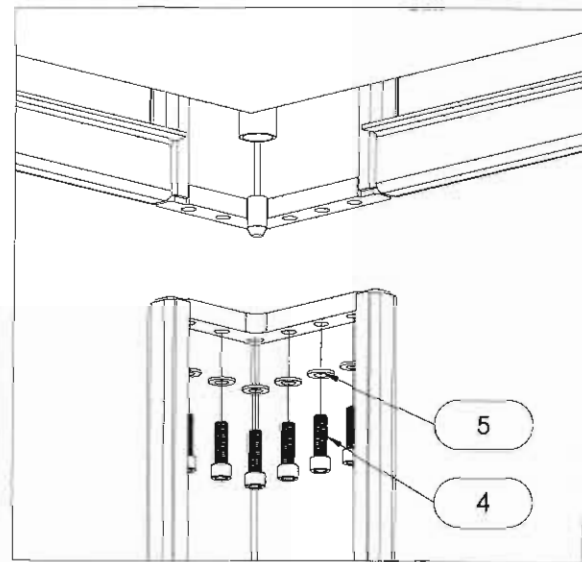


 I hereby certify that
 the design shown on this drawing was prepared or
 supervised by me, and that I am a
 duly licensed professional engineer
 under the laws of the State of MD
 Lic. #21530 Exp. Date 3-16-21

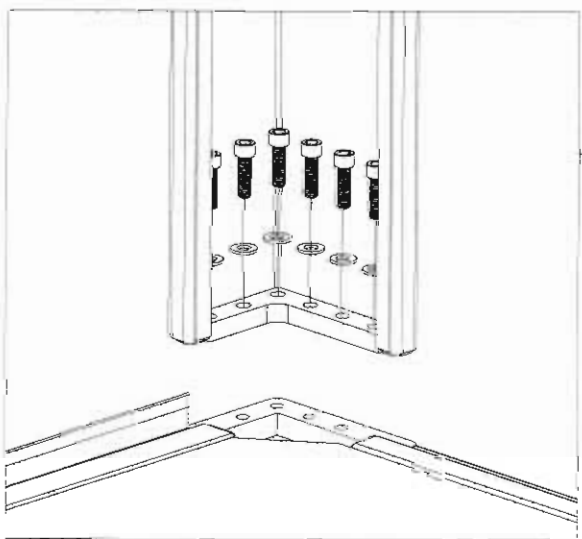
 SEA BOX 1 SEA BOX DRIVE EAST BRITTON, NJ 08077 PH: 856-305-1101 FAX: 856-302-1501 WWW.SEABOX.COM	DRAFTED BY	JOB NUMBER	CUSTOMER	
		MOBU 20	SEA BOX	
	PROJECT MANAGER	TITLE	PARTS LIST	
			DRAWING #	SCALE
	APPROVAL		NA	REV.
				SHEET#
				A2

TOLERANCES
 UNLESS OTHERWISE SPECIFIED:

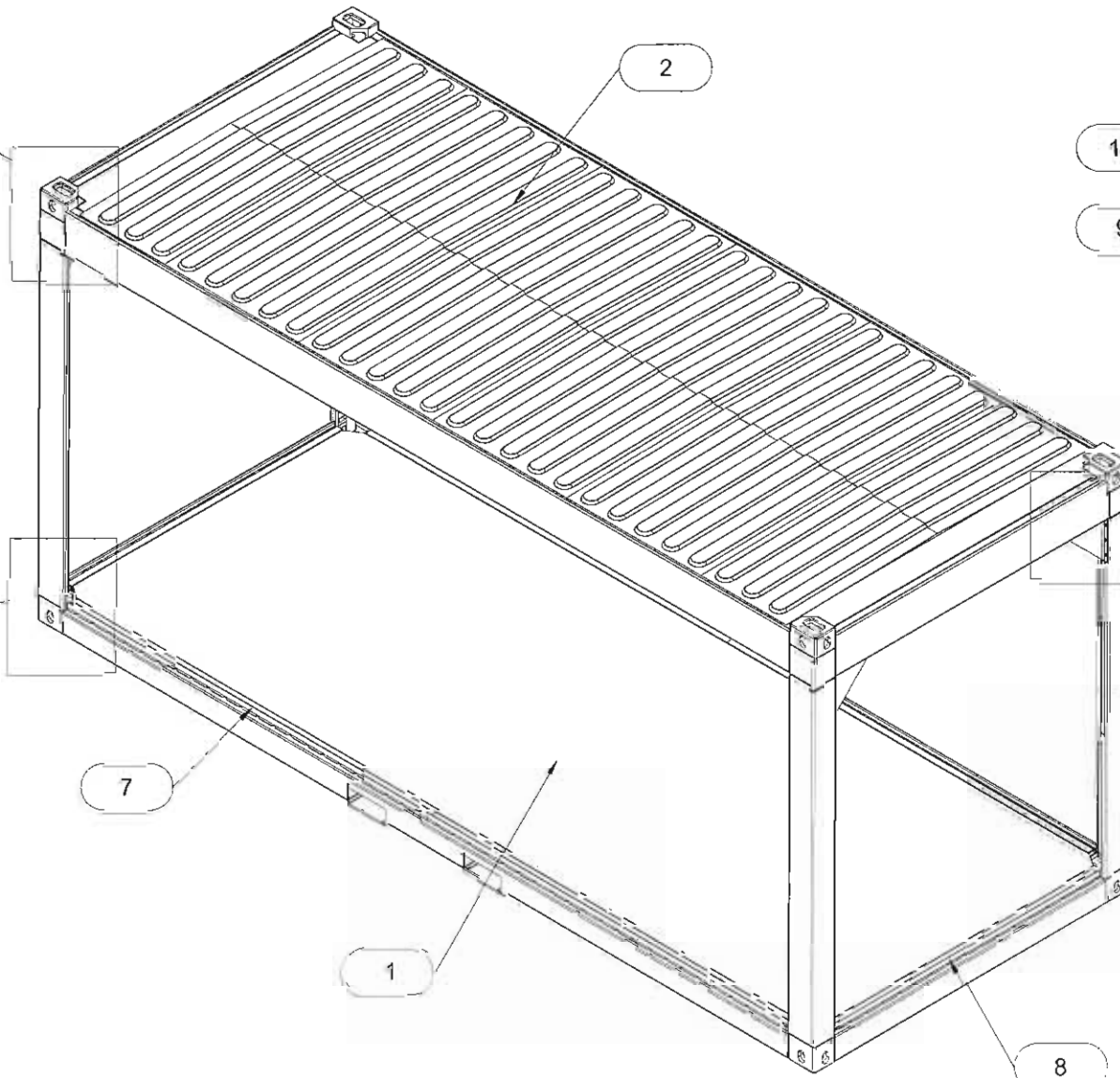
POST AND GUSSET CONNECTION DETAILS FOR MOBU FRAMES



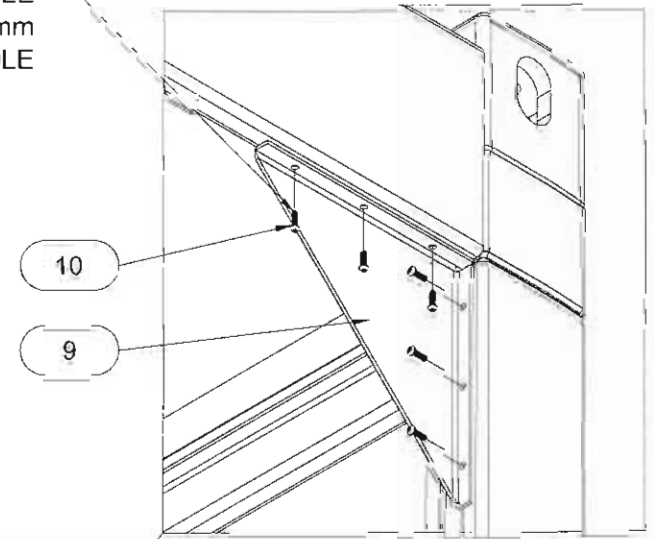
TOP OF POST
EXPLODED VIEW



BOTTOM OF POST
EXPLODED VIEW



GUSSET SCREW MUST BE CAPABLE OF FORMING THREADS INTO 4.5mm TOP RAIL WITH PILOT HOLE



TOP CORNER GUSSET
EXPLODED VIEW

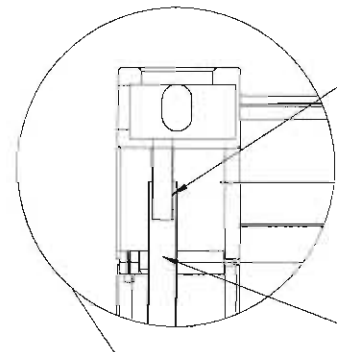
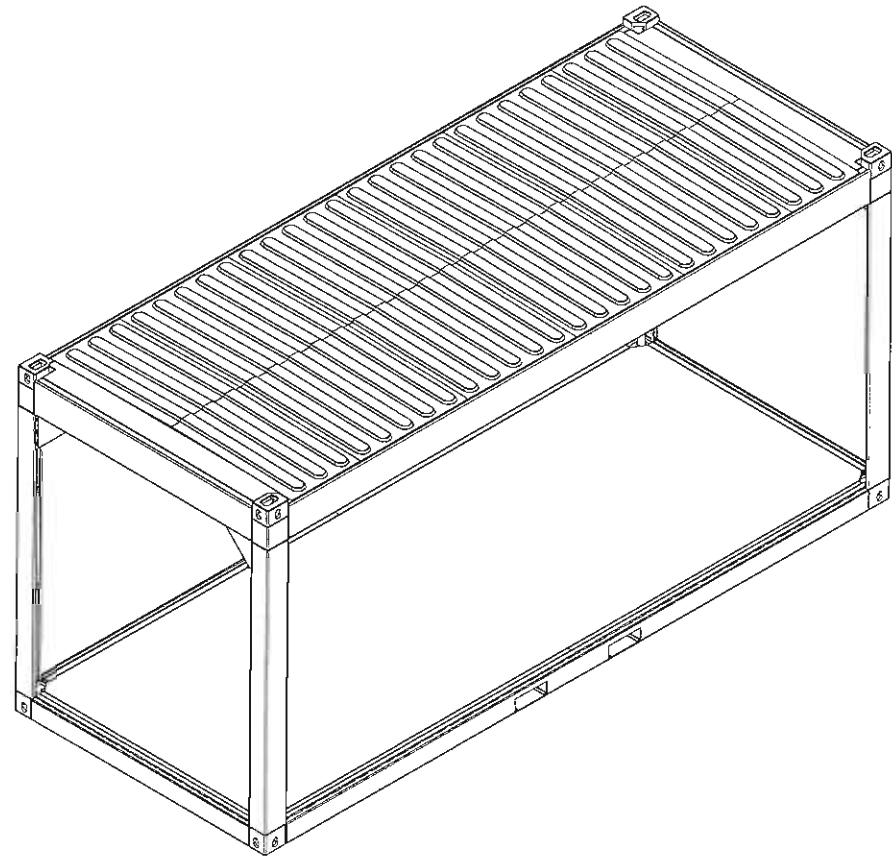


Professional Certification: I certify that these documents were prepared or approved by me, and that I am a duly licensed professional engineer under the laws of the State of MD Lic. #21530 Exp. Date: 3-16-21

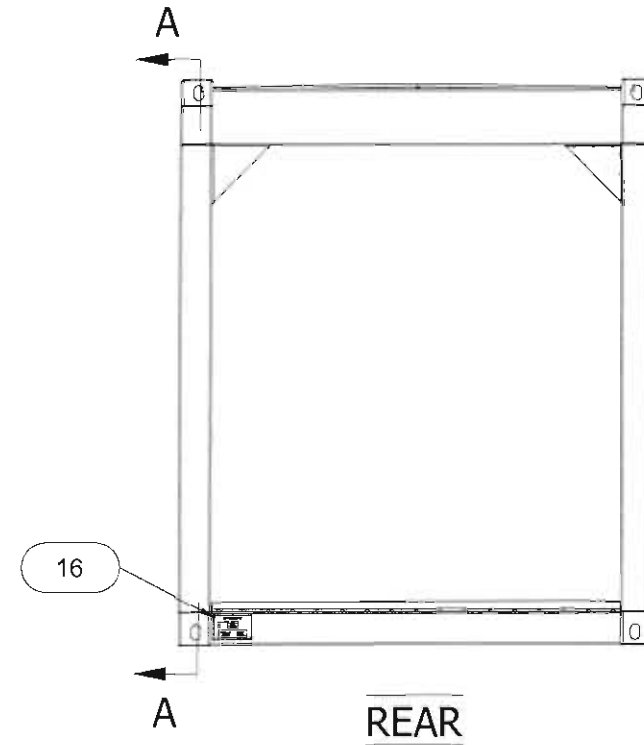
<p>SEA BOX 1 SEA BOX DRIVE EAST RIVINGTON, NJ 08077 PH: 856-303-1101 FAX: 856-303-1504 WWW.SEABOX.COM</p>	DRAFTED BY	JOB NUMBER	CUSTOMER		
		MOBU 20	SEA BOX		
	PROJECT MANAGER	TITLE	POST CONNECTION DETAILS		
	APPROVAL	DRAWING #	SCALE	REV.	SHEET#
			1:37.5		A3

TOLERANCES UNLESS OTHERWISE SPECIFIED

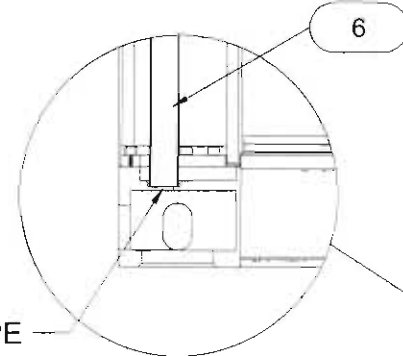
DRAINAGE PIPE DETAILS FOR MOBU FRAMES



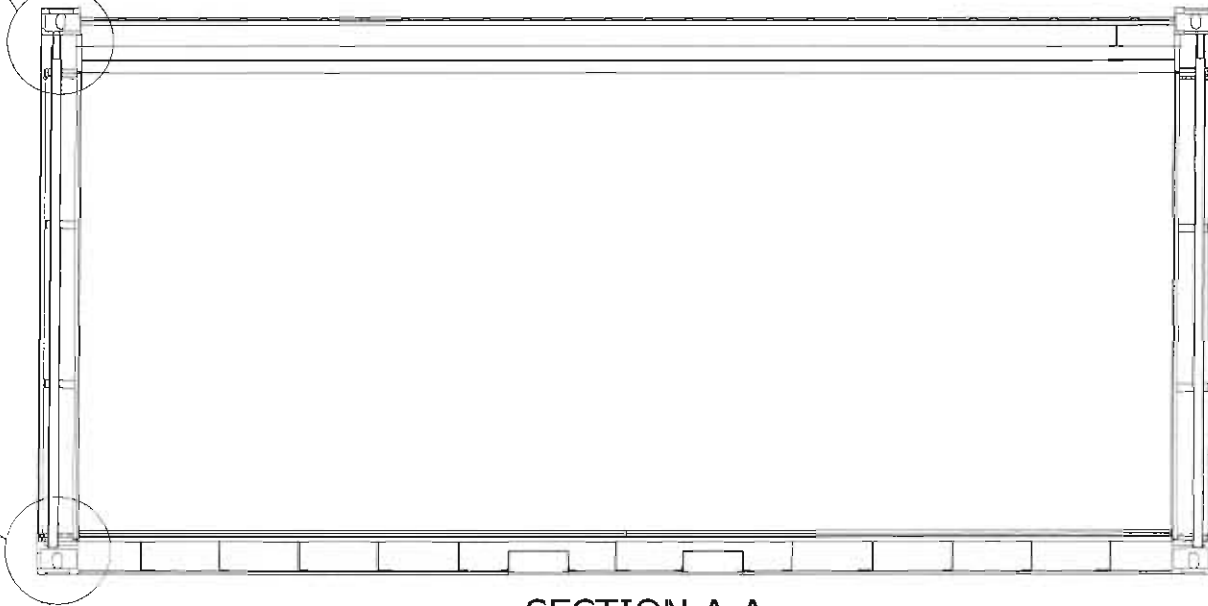
SLIDE PIPE INTO PLACE OVER TUBE
SECURE WITH A SCREW
(ALL 4 CORNERS)



REAR



PLACE BOTTOM OF PIPE IN DRAINAGE HOLE AND SEAL WITH CLEAR SILICONE CAULK



SECTION A-A



Professional Certification. I certify that these documents were prepared or approved by me, and that I am a duly licensed professional engineer under the laws of the State of MD Lic. #21530 Exp. Date: 3-16-21

<p>SEA BOX 1 SEA BOX DRIVE EAST RIVERTON, NJ 08077 PH: 856-303-1101 FAX: 856-303-1501 WWW.SEABOX.COM</p> <p><small>DO NOT SCALE DRAWING DIM IN INCHES UNLESS NOTED OTHERWISE</small></p> <p>TOLERANCES UNLESS OTHERWISE SPECIFIED</p> <p><small>DECIMALS ± .25 FRACTIONAL ± 1/16" ANGLES ± .5°</small></p>	DRAFTED BY	JOB NUMBER	CUSTOMER		
		MOBU 20	SEA BOX		
	PROJECT MANAGER	TITLE	DRAINAGE PIPE DETAILS		
	APPROVAL	DRAWING #	SCALE	REV.	SHEET#
		1:37.5		A4	

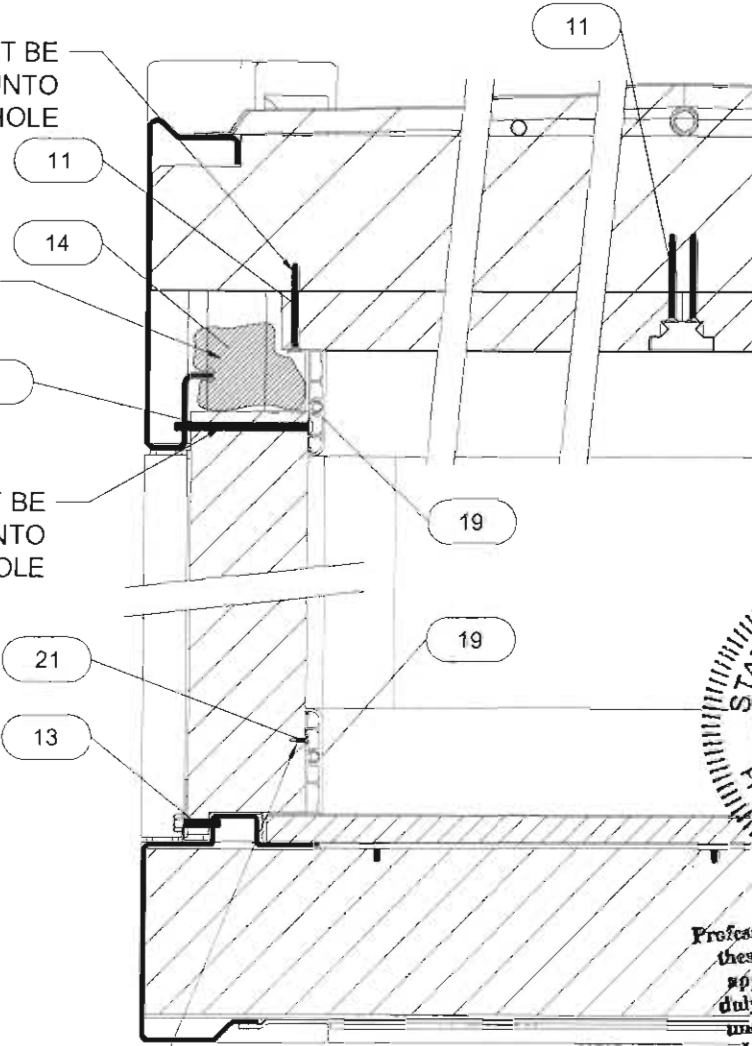
TRIM AND PANEL HARDWARE DETAILS

CEILING PANEL SCREWS MUST BE CAPABLE OF CUTTING THREADS INTO 3mm CROSSMEMBERS WITH PILOT HOLE

MINERAL WOOL WILL BE PRESSED INTO VOID FOR ADDED INSULATION

TOP OF PANEL SCREW MUST BE CAPABLE OF CUTTING THREADS INTO 4.5mm TOP RAIL WITH PILOT HOLE

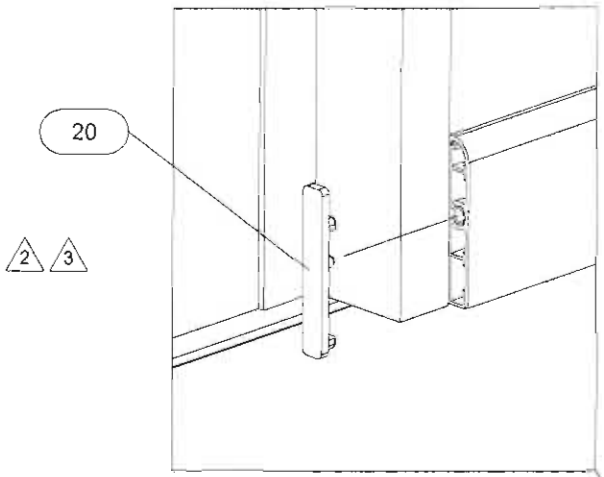
TRIM SCREW MUST BE CAPABLE OF DRILLING THROUGH PVC TRIM AND 0.6mm STEEL SHEET WITHOUT PILOT HOLE



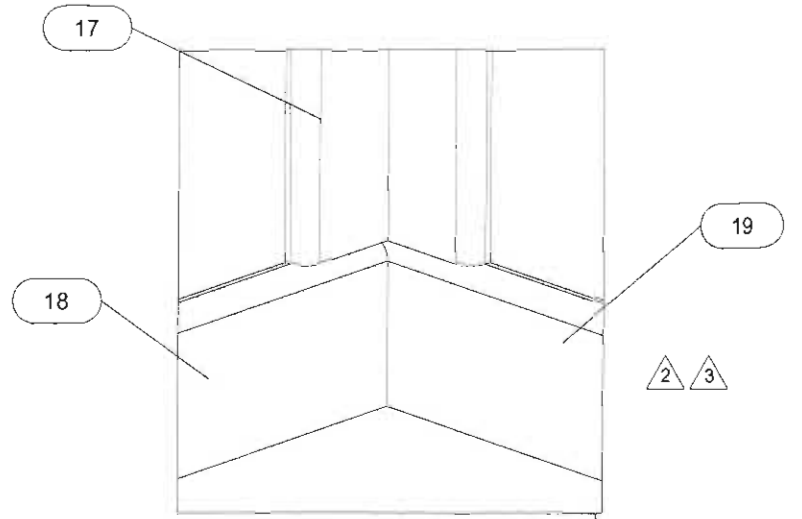
SECTION A-A (SCALED X6)



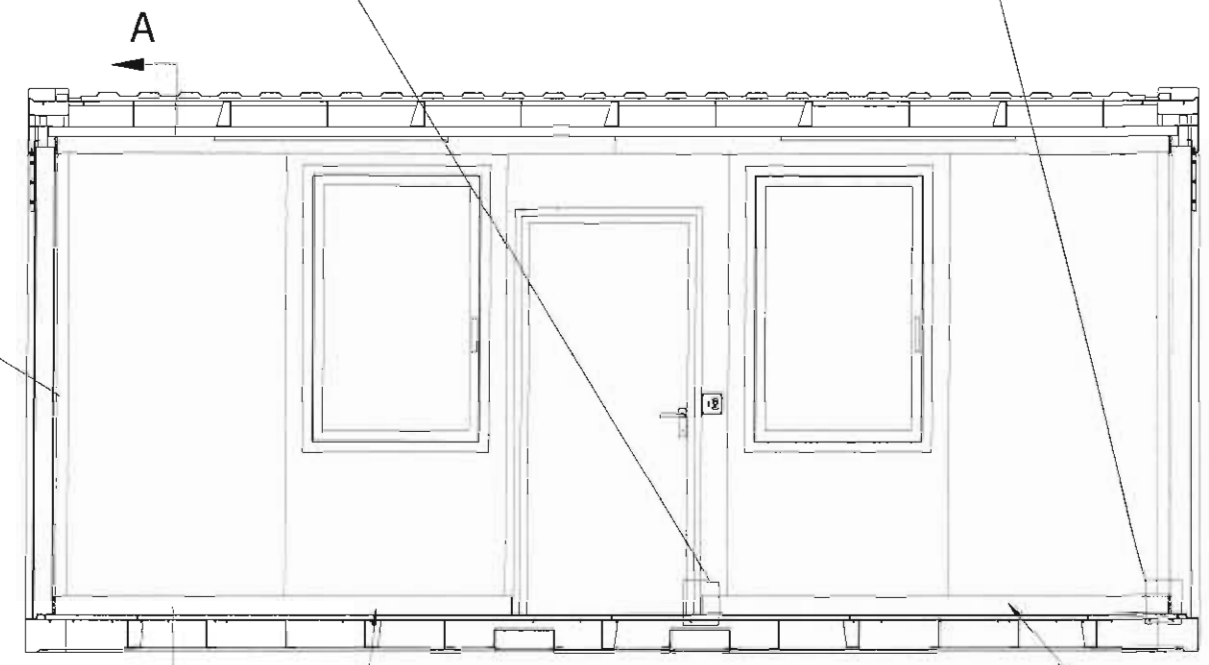
Professional Certification. I certify that these documents were prepared or approved by me, and that I am a duly licensed professional engineer under the laws of the State of MD Lic. #21530 Exp. 12-20



TRIM END CAP ISOMETRIC DETAIL



TRIM BOTTOM CORNER ISOMETRIC DETAIL



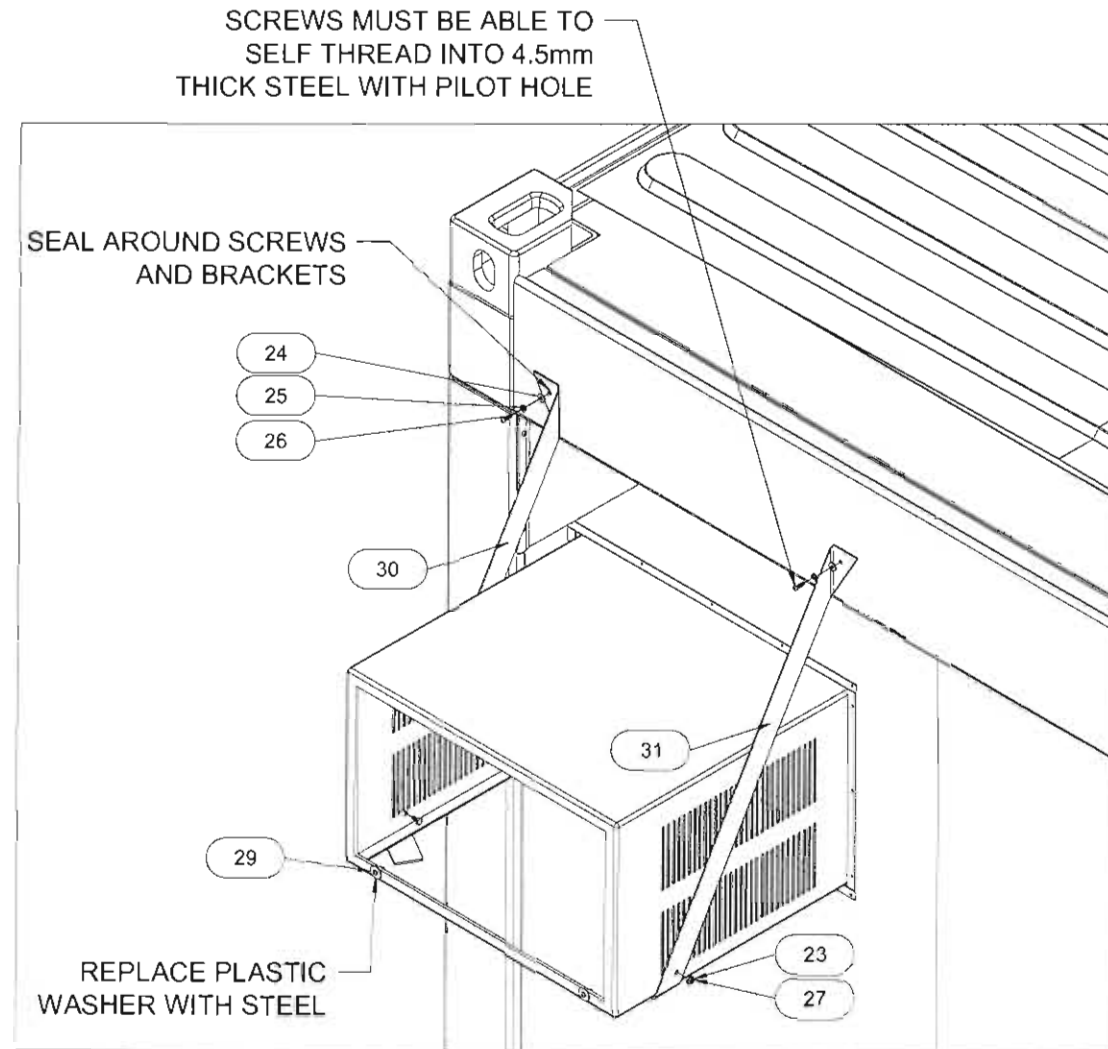
SIDE WALL INTERIOR

SECTION CUT TO LENGTH AT SEA BOX BASED ON DOOR LOCATION

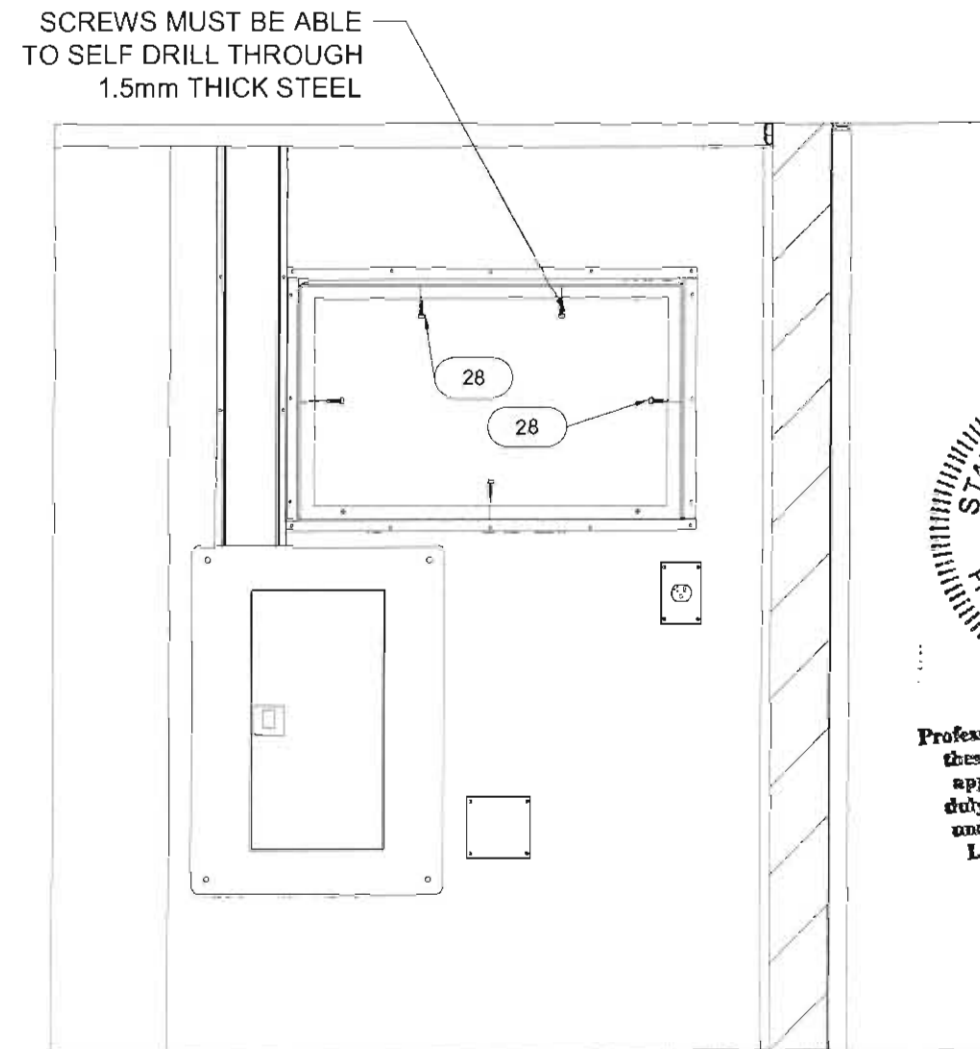
SECTION CUT TO LENGTH AT SEA BOX BASED ON DOOR LOCATION

<p>1 SEA BOX DRIVE EAST RIVERTON, NJ 08077 PH: 856-303-1101 FAX: 856-303-1501 WWW.SEABOX.COM</p>	DRAFTED BY	JOB NUMBER	CUSTOMER		
		MOBU 20	SEA BOX		
	PROJECT MANAGER	TITLE	TRIM AND PANEL HARDWARE DETAILS		
	APPROVAL	DRAWING #	SCALE	REV.	SHEET#
			1:37.5		A5
<p>TOLERANCES UNLESS OTHERWISE SPECIFIED</p> <p>FINISH ± .25" ARCHITECTURE ± .125" MECHANICAL ± .01"</p>					

HVAC HARDWARE DETAILS



HVAC SHELL EXTERIOR INSTALL

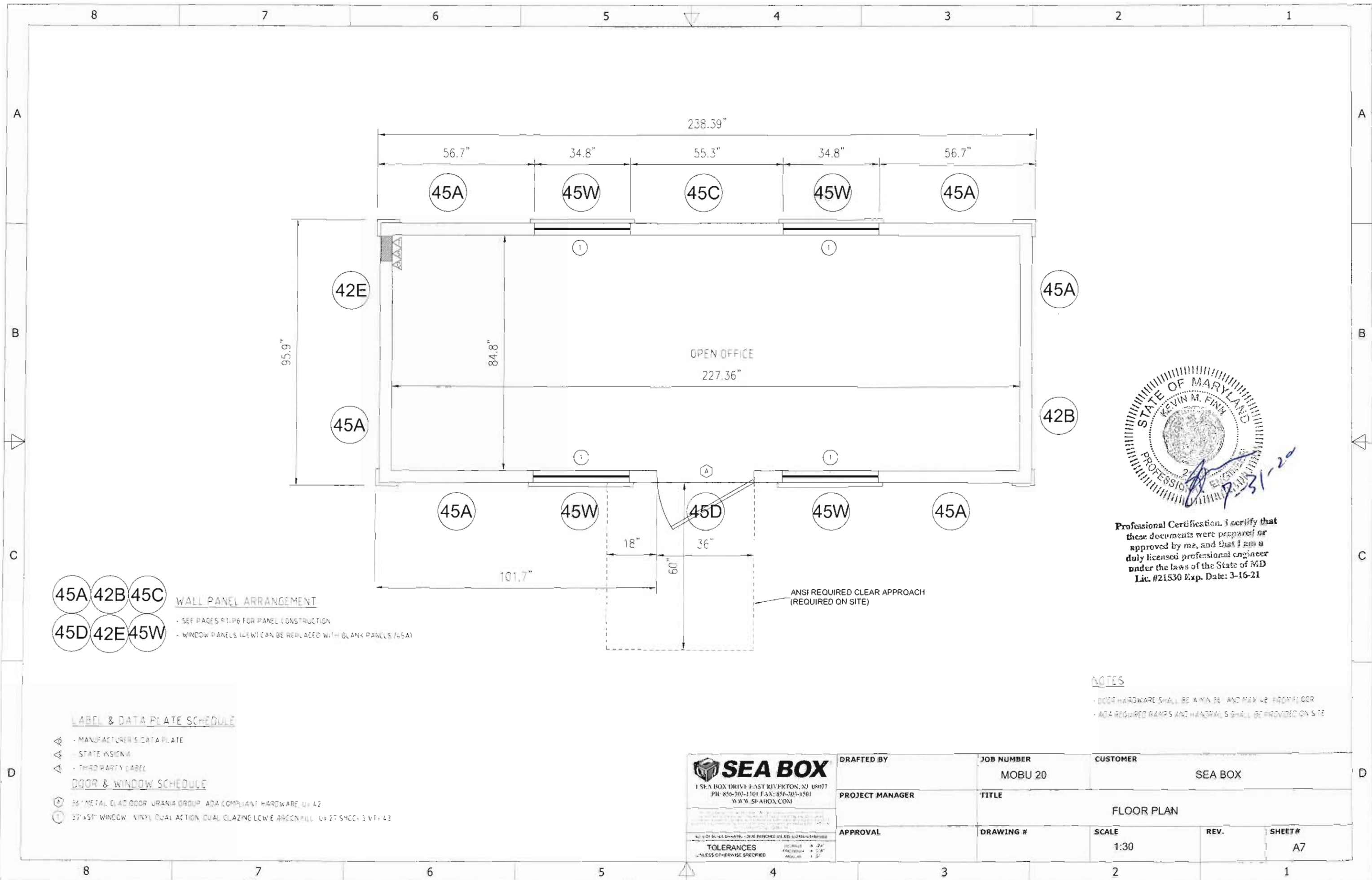


HVAC SHELL INTERIOR INSTALL

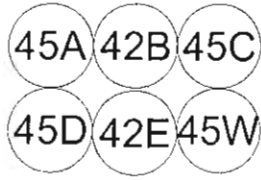


Professional Certification. I certify that these documents were prepared or approved by me, and that I am a duly licensed professional engineer under the laws of the State of MD. Lic. #21539 Exp. Date: 3-16-21

<p>SEA BOX 1 SEA BOX DRIVE EAST RIVINGTON, NJ 08077 PH: 856-303-1101 FAX: 856-303-1501 WWW.SEABOX.COM</p> <p><small>DO NOT SCALE DIMENSIONS. DIMENSIONS UNLESS NOTED OTHERWISE</small></p> <p>TOLERANCES UNLESS OTHERWISE SPECIFIED</p> <p><small>DIMENSIONS: ± .01" FRACTIONS: ± .004" ANGLES: ± .5°</small></p>	DRAFTEO BY	JOB NUMBER	CUSTOMER		
		MOBU 20	SEA BOX		
	PROJECT MANAGER	TITLE	HVAC HARDWARE DETAILS		
	APPROVAL	DRAWING #	SCALE	REV.	SHEET #
		1:37.5		A6	



Professional Certification. I certify that these documents were prepared or approved by me, and that I am a duly licensed professional engineer under the laws of the State of MD Lic. #21530 Exp. Date: 3-16-21



WALL PANEL ARRANGEMENT
 - SEE PAGES 91-96 FOR PANEL CONSTRUCTION
 - WINDOW PANELS (45W) CAN BE REPLACED WITH BLANK PANELS (45A)

LABEL & DATA PLATE SCHEDULE

- △ - MANUFACTURER'S DATA PLATE
- △ - STATE INSIGNA
- △ - THIRD PARTY LABEL

DOOR & WINDOW SCHEDULE

- ⊕ 36" METAL CLAD DOOR URANIA GROUP, ADA COMPLIANT HARDWARE U=42
- ⊕ 37" x 51" WINDOW VINYL DUAL ACTION, DUAL GLAZING LOW E ARGON FILL U=27 SHCC=3 V1=43

NOTES

- DOOR HARDWARE SHALL BE A MAX 36" AND MAX 48" FROM FLOOR
- ADA REQUIRED RAMP AND HANDRAILS SHALL BE PROVIDED ON SITE

 1 SEA BOX DRIVE EAST RIVINGTON, NJ 08077 PH: 856-303-1101 FAX: 856-303-1501 WWW.SEA-BOX.COM	DRAFTED BY	JOB NUMBER	CUSTOMER		
		MOBU 20	SEA BOX		
	PROJECT MANAGER	TITLE	FLOOR PLAN		
	APPROVAL	DRAWING #	SCALE	REV.	SHEET#
			1:30		A7

TOLERANCES
 UNLESS OTHERWISE SPECIFIED

COPPER WIRE SIZE	
BREAKER SIZE	MINIMUM WIRE SIZE
20A	12 AWG
60A	6 AWG
GROUNDING ELECTRODE CONDUCTOR	
ENTRY WIRE SIZE	GROUND WIRE SIZE
2 AWG OR SMALLER	8 AWG
1 AWG OR 1/0	6 AWG
2/0 OR 3/0	4 AWG
EQUIPMENT GROUNDING CONDUCTOR	
BREAKER SIZE	MINIMUM WIRE SIZE
20A	12 AWG

ELECTRICAL NOTES:

1. ALL WIRING SHALL BE MC CABLE
2. PANEL BOARD SHALL BE SERVICE ENTRANCE RATED

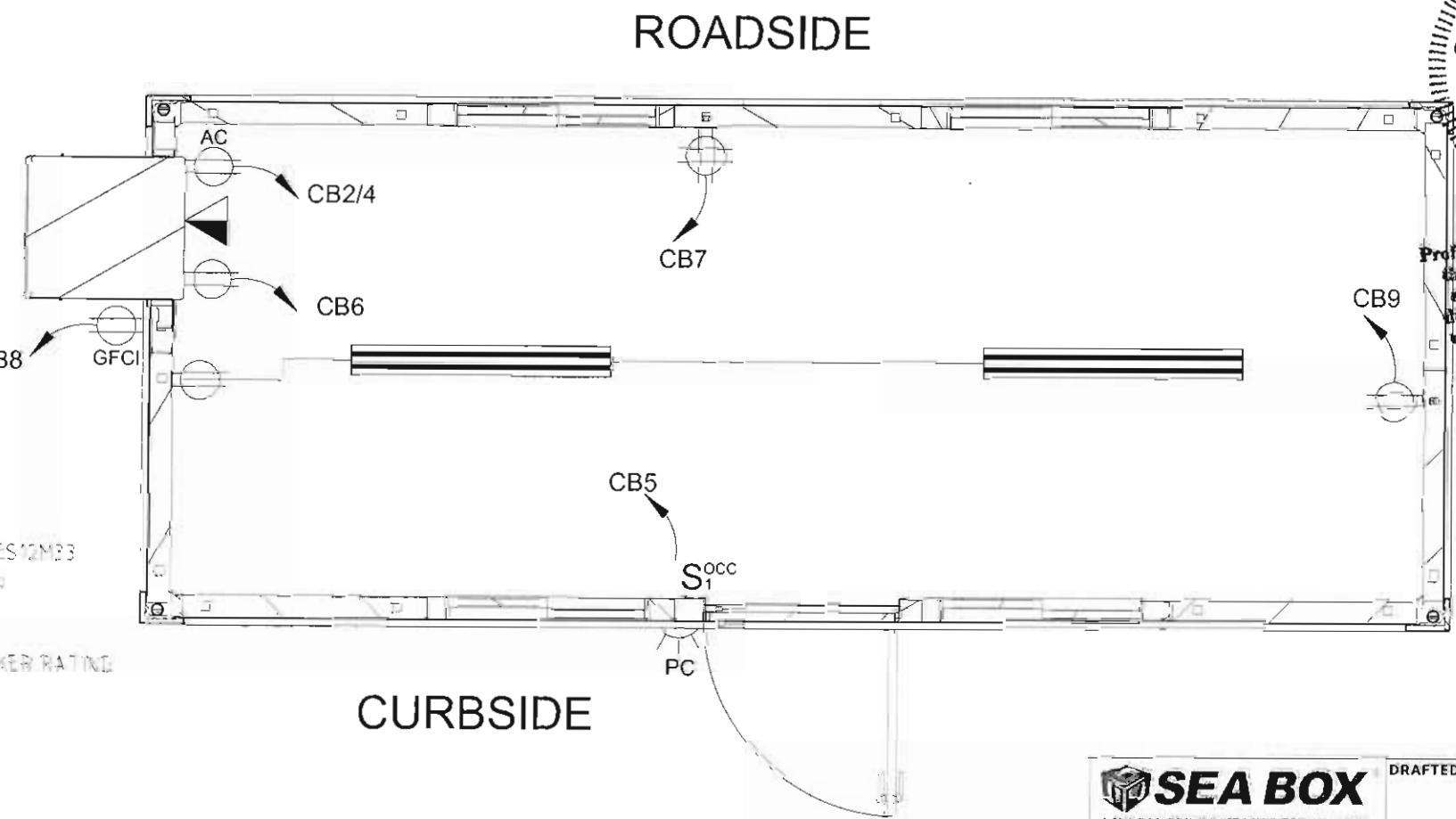
#	DESCRIPTION	BREAKER	A	B	BREAKER	DESCRIPTION	#
1	SERVICE ENTRANCE	60	*1750		20	HVAC	2
3				*1750			4
5	LIGHTING	20	98/180		20	REAR INT RECEPTS	6
7	ROADSIDE INT RECEPTS	20		360/180	20	EXT GFI RECEPT	8
9	FRONT INT RECEPTS	20	180/*				10
11							12
TOTAL PHASE WATTS			2208	2290			
TOTAL PHASE AMPS			18.4	19.1			
TOTAL PANEL WATTS			4498				
TOTAL PANEL AMPS			18.7				

SINGLE PHASE - 120/240
MAIN BREAKER - 60A



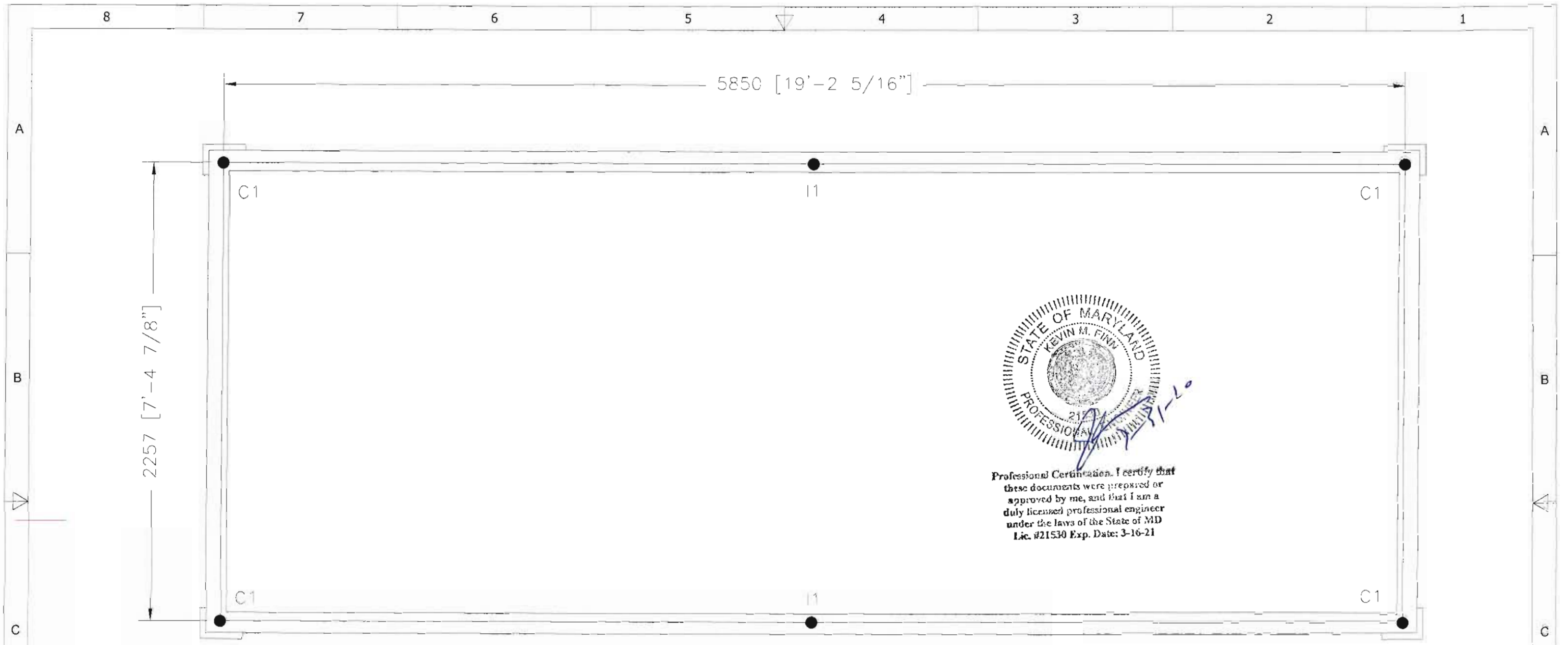
Professional Certification. I certify that these documents were prepared or approved by me, and that I am a duly licensed professional engineer under the laws of the State of MD Lic. #21336 Exp. Date: 3-16-21

ELECTRICAL NOTES	
1.1	ALL ELECTRICAL WORK SHALL BE PERFORMED IN ACCORDANCE WITH GOVERNING EDITION OF THE NATIONAL ELECTRICAL CODE (NEC).
1.2	ALL ELECTRICAL EQUIPMENT SHALL BE NEW AND INSTALLED ACCORDING TO MANUFACTURER'S SPECIFICATION.
1.3	UNLESS OTHERWISE SPECIFIED, ALL WIRES SHALL BE COPPER, STRANDED, THHN OR THWN.
1.4	ON COMPLETION OF ALL ELECTRICAL WORK, THE ENTIRE WIRING SYSTEM SHALL BE FREE FROM GROUND FAULTS, SHORT CIRCUITS, OPENS, OVERLOADS AND IMPROPER VOLTAGES.
1.5	ALL DEVICES AND EQUIPMENTS SHALL BE SUCCESSFULLY TESTED.
1.6	ALL DISTRIBUTION PANELS, DEVICES AND EQUIPMENTS SHALL BE PROPERLY LABELED.
1.7	INTERIOR LIGHTS TO BE LOW PROFILE DIMMABLE LED FIXTURE, TL100 SERIES, 37.5W
1.8	EXTERIOR LIGHTS TO BE LITHONIA WALL PACK LED SECURITY LIGHT, 23W



HVAC
-FRIEDRICH MODEL ES12M33
-1200 BTU COOLING
-8900 BTU HEAT
-375 CFM
-20A CIRCUIT BREAKER RATING

 1 SEA BOX DRIVE EAST RIVERTON, NJ 08077 PH: 856-204-1101 FAX: 856-204-1501 WWW.SEA-BOX.COM	DRAFTED BY	JOB NUMBER	CUSTOMER
	PROJECT MANAGER	MOBU 20	SEA BOX
APPROVAL	TITLE	ELECTRICAL LAYOUT AND PANEL	
TOLERANCES UNLESS OTHERWISE SPECIFIED	DRAWING #	SCALE	REV. SHEET#
		1:30	E1



Professional Certification. I certify that these documents were prepared or approved by me, and that I am a duly licensed professional engineer under the laws of the State of MD Lic. #21530 Exp. Date: 3-16-21

PLAN VIEW

NOTES:

1. R_{UP} EQUALS THE +Z VERTICAL REACTION RESISTING GRAVITY LOADS.
2. R_{DN} EQUALS THE -Z VERTICAL REACTION RESISTING UPLIFT LOADS.
3. V EQUALS THE HORIZONTAL (LATERAL) REACTION AND MAY ACT IN EITHER THE X OR Y DIRECTION.
4. ANCHORAGE EQUALS FLOOR FRAME AND FOUNDATION DESIGN TO BE BY OTHER DESIGN PROFESSIONAL.

ASD REACTIONS (KIPS)			
LOCATION	R_{UP}	R_{DN}	V
C1	6.07	0.99	0.30
I1	5.48	-	-

<p>1 SEA BOX DRIVE EAST RIVERTON, NJ 08077 PH: 856-304-1101 FAX: 856-701-1511 WWW.SEA-BOX.COM</p>	DRAFTED BY	JOB NUMBER	CUSTOMER	
		MOBU 20	SEA BOX	
	PROJECT MANAGER	TITLE	FOUNDATION REACTIONS	
	APPROVAL	DRAWING #	SCALE	REV.
				SHEET#
				FND1

TOLERANCES UNLESS OTHERWISE SPECIFIED