

2020-034-WP

MODEL NUMBER: 7111
MODEL SIZE: 64x12 (11'-9" x 60'-0" BOX)
NOTE: MODULE FOR USE AS
PART OF MULTI-MODULE BUILDING

NOTE: REFER TO HEXAGON SYMBOLS ON DRAWINGS

APPROX. MODULE SHIPPING HEIGHT (PEAK OF ROOF): 13'-6"

APPROX. MODULE SHIP WEIGHT (INCL. SHIPLOOSE): 31200 Lb's -- SIDE WALL MODULES
26800 Lb's -- CENTER MODULES
36000 Lb's -- RT. S/W (INCLUDING RESTROOM OPTIONS)

A-FRAME

- 1 TYPE: PERIMETER
- 2 MAIN BEAM: W12"x14#
- 3 X-MEMBER: W8"x10#, @ 48" (NOM.) O.C.
- 3a X-MEMBER: SINGLE W8"x 10# BEAM AS HITCH MOUNT CROSS-MEMBER
- NOTE: CROSS-MEMBERS FLUSH W/TOP OF MAIN RAILS.
- NOTE: INSTALL 4"H x 12"L. BLOCKING SPACER ALONG SIDE WALL MAIN RAILS; SEE DRAWINGS FOR LOCATIONS, WELD TO CROSS-MEMBERS AND TO INBOARD BOTTOM FLANGE
- NOTE: SET SPRING HANGER LONGITUDINAL RAILS AT 74" O.C. TO CLEAR TIRES
- REINFORCE WEB ABOVE HANGER w/ 1/4" PLATE, OR 3/16" ANGLE
- NOTCH TRANSVERSE WHEELBOX MEMBERS TO PROVIDE TIRE CLEARANCE AS REQ'D.
- 5 HITCH: BOLT-ON, W8"x10 # RAILS
- 6 AXLES: FIVE - 75 1/2" SPRING CENTER (92" TRACK), LEADING TANDEM; TRAILING TRIPLE
- 6a AXLES: SIX - 75 1/2" SPRING CENTER, (92" TRACK), TWO PAIRS TRIPLE AXLE-RR MODULES ONLY
- 7 SPRINGS: MULTI-LEAF, **UNDERSLUNG**
- 8 TIRES: 8:00 X 14.5, 12 PLY
- 9 TIE DOWN: OVER THE FRAME
- NOTE: PROVIDED & INSTALLED BY OTHERS ON SITE.
- SEE FOUNDATION PLAN FOR TIE DOWN LOCATIONS
- 10 MISC: 26 GAUGE GALVANIZED BOTTOM BOARD
- 13 MISC: 1/2"DIA. HOLE 48"O.C. TOP AND BOTT. FLANGE AT PERIMETER OF BUILDING
- 16 MISC: I BEAM CLAMPS 15'-0" O.C. MAX. (SHIPLOOSE)
- 17 MISC: THIS UNIT WILL HAVE STEEL COLUMNS, INTEGRAL W/ STEEL CHASSIS/FRAME
- 18 MISC: THIS UNIT WILL HAVE STEEL DIAG. BRACES - SEE DRAWING
- 19 MISC: **STENCIL SERIAL NUMBER ON HITCH & FRONT CROSS-MEMBER**
- 21 UNDER COATING: RUST INHIBITIVE LATEX TYPE PAINT, BLACK: 100% COVERAGE OF STRUCTURAL MEMBERS.

B-FLOOR

- 1 BOTTOM BOARD: 26 GAUGE GALVANIZED BOTTOM BOARD (SERVES AS IGNITION BARRIER FOR RIGID INSULATION IN FLOOR).
- NOTE: SHIP LOOSE BOTTOM BOARD & INSULATION FOR WHEEL-WELL AREAS, TO BE INSTALLED BY OTHERS ON SITE.
- 2 INSULATION: (2) LAYERS OF 2.7" RIGID FOAM INSULATION (R-31)
- 3 JOISTS: 2 x 6 (#2 SPF) AT 16" O.C. NOMINAL
LONGITUDINAL JOISTS
W/ DBL SIDERAILS BELOW EXT. DOORS
W/ DBL SIDERAILS AT MATELINE SIDE
(FRAME OUT WHEEL WELLS, LINE FACE OF FRAMING w/ SIMPLEX, STRETCH SIMPLEX ACROSS TOP OF OPENINGS & SECURE, BEFORE DECKING INSTALLED)
(DO NOT INSTALL BRACKETS AT PIER LOCATIONS)
- 4 DECKING: 3/4" T&G UNDERLAYMENT PLYWOOD (RATED 40/20)
HOLD BACK DECKING 5" AT OPEN MATE LINES
(3/4" PLYWOOD PROVIDES THERMAL BARRIER BETWEEN FOAM PLASTIC INSULATION AND BUILDING INTERIOR)
- 5 COVERING: NONE -- FLOOR COVERING TO BE SUPPLIED AND INSTALLED BY OTHERS AT SITE.
- 5 COVERING: 1/8" VINYL COMPOSITION TILE
- NOTE: IN RESTROOMS, JANITORS CLOSETS ONLY
- NOTE: OPTIONAL INSTALLATION THROUGHOUT BUILDING- SEE SERIAL NUMBER LIST (HOLD BACK TILE 10 1/2")
- COLOR: FORTRESS WHITE #51839

C-EXTERIOR WALLS

NOTE: SHIPPING WALLS TO BE "A-FRAME" TYPE.

NOTE: DO NOT REMOVE SHIPPING WALLS AT MODULE MATE LINES, UNTIL MODULE IS SET ON PERMANENT FOUNDATION.

NOTE: COVER HITCH END AND REAR END WALLS w/ VISQUEEN; ON HITCH END START VISQUEEN BELOW BARDS -- ALL UNITS, ALL WEATHER WRAP BARDS AND ALL EXTERIOR WALLS IN FALL & WINTER

- 1 STUDS (SIDEWALLS): 2 x 6 (SPF #2) @ 16" O.C.
1a STUDS (ENDWALLS): 2 x 4 (SPF #2) @ 16" O.C.
SIDEWALL HT: 9'-6 1/2" STUD LENGTH: 110"
ENDWALL HT: 9'-7 5/8" STUD LENGTH: 111 1/8"
- DBL. STUDS EACH END OF SIDEWALLS (SPF #2);
- SGL. JAMBSTUD AT DOORS & WINDOWS (SPF #2);
- SGL. JACKSTUD AT ENDWALL WINDOWS/DOORS (SPF #2);
- NOTE: ALL JAMB- AND JACK-STUDS TO BE NON-DADOED**
- TRIPLE. 2" X 6" (SPF #2) HEADERS OVER WINDOWS
- TRIPLE. 2" X 6" (SYP #2) HEADERS OVER 36" DOORS
- TRIPLE 2" X 8" (SPF/SYP #2) HEADERS OVER DBL. DOOR ROUGH-INS
- NOTE: INSTALL CONTINUOUS DBL. 2x4 BLOCKING BETWEEN STUDS -- LOWER BLOCK CENTERED @ 93 5/8" ABOVE BOTTOM OF WALL
- NOTE: INSTALL FORMED CHANNELS, 20" L. ON SIDEWALLS ONLY, FOR ATTACHMENT OF DIAGONAL BRACES -- BOTTOM OF CHANNEL UP 96" A.F.F.
- NOTE: TRIPLE (2 X 6) TAPERS ABOVE SIDEWALLS TAPER FROM 4 7/8" @ PEAK, TO 1 1/8" @ ENDS
- 2 BOTTOM PLATE: (1) 2 x 6 (#3 SPF) SIDE WALLS
2a BOTTOM PLATE: (1) 2 x 4 (#3 SPF) END WALLS
3 TOP PLATE: (2) 2 x 6 (#3 SPF) SIDE WALLS
3a TOP PLATE: (2) 2 x 4 (#3 SPF) END WALLS
4 COVERING: 1/2" VINYL COV. GYP. BOARD (CLASS I F.S.)
COLOR: LOOMA BEIGE
NOTE: DO NOT HOLD BACK COVERING AT MATE LINE
NOTE: DO NOT INSTALL INTERIOR TRIM -- SEE TRIM SECTION
- 4a COVERING: .090 FRP (NUDO) OVER
(OPTIONAL RR UNITS) 1/2" UNFINISHED GYPSUM BOARD (CLASS I F.S.)
COLOR: WHITE
- 4b COVERING: SURPLUS GYP BD., (MIN. 1/2") , ABOVE 8'H. V.C.G.
5 SHEATHING: AIR INFILTRATION BARRIER (TYVEK OR EQUAL)
6 INSULATION (SW): 3" ICYNENE PROSEAL SPRAY FOAM INSULATION R-7.1 / IN. (R-21.3) w/ R-15 UNFACED FIBERGLASS INSULATION
6a INSULATION (EW): 3" ICYNENE PROSEAL SPRAY FOAM INSULATION R-7.1 / IN. (R-21.3)
NOTE: KRAFT PAPER FACING TOWARDS HABITABLE SPACE
- 7 SIDING: 7/16" T1-11 SMART PANEL (GROOVES 4" O.C.)
COLOR: SILVERPOINT, SEMI-GLOSS
(SEE FORMULA NOTE BELOW)
- 8 TRIM: EXTERIOR TRIM: **M.D.O. BOARD**
5/4 x 4 -@ WINDOWS **COLOR: SILVERPOINT, SEMI-GLOSS**
1 x 4 -@ CORNERS **COLOR: SILVERPOINT, SEMI-GLOSS**
1 x 4 -@ MATELINE SEAMS **COLOR: SILVERPOINT, SEMI-GLOSS**
NOTE: SHIPPED LOOSE
1 x 6 -@ SIDING/SKIRT SEAM **COLOR: SILVERPOINT, SEMI-GLOSS**
SHIP LOOSE SIDING / SKIRT TRIM
- NOTE: INSTALL "Z" MOLD @ BOTTOM OF SIDING
- 9 SKIRTING: NONE
10 COLUMNS: 3" X 3" X 3/16" STEEL TUBING
COL. LENGTH (INCLUDING STEEL TOP & BOTTOM PLATES):
SEE DRAWING
NOTE: WELD CHANNEL EXTENSION TO COLUMN FOR BOLTED **CONNECTION TO BOTTOM CHORD.**

D-INTERIOR WALLS

- 1 STUDS: 2 x 4 (SPF STUD) @ 24" O.C.
INT. WALL HT: 8'-0" STUD LENGTH: 91 1/2"
NOTE: RATED WALLS IN OPTIONAL LAYOUT MODULES TO EXTEND TO UNDERSIDE OF ROOF SYSTEM
NOTE: ONLY UNNOTCHED STUDS ARE TO BE USED FOR FIRE RATED WALLS (RIGHT SIDEWALL RESTROOM OPTIONS). HOLES MAY BE DRILLED FOR WIRING BUT VOIDS MUST BE FILLED WITH "FIRE CAULK" BEFORE WALL IS COVERED
- 2 BOTTOM PLATE: (1) 2 x 4 (#3 SPF)
3 TOP PLATE: (2) 2 x 4 (#3 SPF)
4 COVERING: 1/2" VINYL COV. GYP. BOARD (CLASS I F.S.)
COLOR: **LOOMA BEIGE**
NOTE: DO NOT INSTALL INTERIOR TRIM -- SEE TRIM SECTION
- 4a COVERING: .090 FRP (NUDO) OVER
(OPTIONAL RR UNITS) 1/2" UNFINISHED GYPSUM BOARD (CLASS I F.S.)
COLOR: **WHITE**
- 4b COVERING: 1/2" TYPE-X VINYL COV. GYP. B'D. (CLASS I F.S.) OVER 5/16 UNFINISHED GYP.
(OPTIONAL RR UNITS (1-HR. RATED WALL ASSEMBLY PER GA WP3341)
J CLST ONLY) COLOR: **LOOMA BEIGE**
- 5 INSULATION: R-11 UNFACED FIBERGLASS BATT IN PLENUM WALL
5a INSULATION: R-11 UNFACED FIBERGLASS BATT IN RESTROOM UNITS-
RESTROOM WALLS ONLY
- 7 MISC: 2x4 PLENUM WALL (STUDS @ 24" O.C.)
(PLENUM LINED ON INTERIOR TO SECURE INSULATION)
NOTE: MIN. 0.10" THERMO-PLY LINING INSTALLED IN ACTUAL PLENUM ONLY NOT ON ENTIRE WALL.
- 11 MISC: A-FRAME SHIPPING WALLS, (5) PER OPEN SIDE

E-ROOF

- 1 RAFTERS: 2 x 10 (# 2 SYP), UNTAPERED, @ 16" O (60# PSF L/L)
ALTERNATE- 2 x 10 (# 2 SPF), UNTAPERED, @ 16" O.C.
NOTE: 2x10 ROOF FRAMING 64'-0"L. OVERALL
- 2 MATE BEAM: STEEL TRUSS, 60' CLEAR SPAN 60# PSF L/L
26 1/4"H. @ LOW END 30"H. @ CTR. PEAK
NOTE: 2x8 SPF#3 PLATE CARRIAGE BOLTED TO TRUSS TOP CHORD
(64'-0" LONG - 2'-0" OVERHANG EACH END OF TRUSS)
NOTE: TRUSS TOP & BOTTOM CHORDS BOLTED TO CORNER POST
SUSPENDED (T-GRID) W/ 2'x 4' LAY-IN TILE
w/ 7'-10 1/2" FINISH CEILING HEIGHT
NOTE: CEILING TILE TO BE ARMSTRONG # 769 CORTEGA FISSURED
ACOUSTIC TILE, 2' x 4', CLASS A FLAME SPREAD;
ARMSTRONG METAL TEE-GRID SYSTEM TO HAVE WHITE FINISH
NOTE: GRID TO BE POP RIVETED AT INTERSECTIONS OF MAINS
AND CROSS TEES, AND AT INTERSECTIONS OF WALL ANGLES
AND CROSS TEES
ALL LIGHTS TO HAVE HANGER WIRES AT EACH CORNER
NOTE: SHIP LOOSE TILE AND GRID TEES FOR ON-SITE INSTALLATION
(BY OTHERS) AT MATE LINE HOLD BACKS
NOTE: Ceiling grid installed to meet IBC/ASCE 7 Seismic Design Categories A-B,
with additional bracing as required to resist over-the-road shipping stresses. For buildings
located in areas of higher Seismic Design Categories (C, D, E, or F), additional
ceiling grid bracing, reinforcement, and/or seismic clips may be required. Consult local
building officials to verify site Seismic Design Category and ceiling installation requirements.
- 5 TRUE CEILING: 1/2" UNFINISHED GYP BOARD (CLASS I F.S.) - THERMAL BARRIER
ON UNDERSIDE OF RAFTERS
- 5a TRUE CEILING: (2) LAYER 5/8" TYPE "X" UNFINISHED GYPSUM BOARD
(OPTIONAL RR UNIT (1-HR RATED CEILING ASSEMBLY GA #RC 2601)
J CLST) NOTE: CUT OUT CEILING BOARD FOR 5/8" PLYW'D COMPRESSION PLATE,
2 1/2"W., BETWEEN RAFTER AND UNDERSIDE OF BEARING WALLS
- 6 INSULATION: R-38C KRAFT-FACED H.P. FIBERGLASS BATT
NOTE: KRAFT PAPER FACING TOWARDS HABITABLE SPACE
- 7 SHEATHING: MULE HIDE "FR" CLASS C SHEATHING
(5/8" PLYWD W/ CLASS C FIRE RETARDANT COATING)
NOTE: IF DECKING IS STAPLED,
USE MIN. 15GA. X 7/16" CROWN x 1 1/2" LEG STAPLE, SPACED 6" O.C. @ EDGES,
AND 6" O.C. @ INTERMEDIATE RAFTERS (120MPH WIND LOAD).
- 8 ROOFING: EPDM RUBBER 1-PC. MEMBRANE, 45 mil, BLACK

- 9 MANSARD: 7/16" T1-11 SMART PANEL (GROOVES 4"O.C.)
MANSARD PROFILE: FLAT
MANSARD TOP EDGE: FOLLOWS ROOF LINE
SIDEWALL OVERHANG: 1 1/2"
ENDWALL OVERHANG: 24"
SIDE HEIGHT: 37 7/8" @ PEAK
END HEIGHT: 33 1/8"
COLOR: SILVERPOINT, SEMI-GLOSS
MANSARD TRIM TO BE M.D.O. BOARD
1 x 6 @ MANSARD TOP EDGE, EXTEND TO MATE LINE
W/ K-60 MINI-GUTTER --HOLD BACK MINI-GUTTER
12" @ MATELINE
1 x 4 @ MANSARD CORNER
1 x 4 @ MANSARD BOTTOM
NOTE: SHIPLOOSE AT ENDWALLS
1 x 4 @ MATELINE MANSARD & SOFFIT SEAMS
NOTE: SHIPLOOSE
COLOR: SILVERPOINT, SEMI-GLOSS
NOTE: MANSARD TO BE FIRESTOPPED AT 20' O.C. WHEN
MANSARD IS A SEPARATE ENCLOSED SPACE FROM
THE ROOF CAVITY.
NOTE: END WALL MANSARD FRAMING 2x3 CONSTRUCTION, w/ TOOTHED
NAIL PLATES ON INTERIOR SIDE OF FRAMING, UPRIGHTS @ 24"O.C. NOM.
- 10 SOFFIT: 7/16" T1-11 SMART PANEL (GROOVES 4"O.C.)
WIDTH: 23 1/4"
COLOR: SILVERPOINT, SEMI-GLOSS
NOTE: END WALL SOFFIT FRAMING 2x2 FR./ REAR RAILS, 2x3 UPRIGHTS, w/ TOOTHED
NAIL PLATES ON INTERIOR SIDE OF FRAMING, LONGITUDINALS @ 24"O.C. NOM.
- 12 GUTTER: K60 MINI GUTTER (COLONIAL WHITE)
NOTE: HOLD BACK 12" AT MATE LINES
- 13 MISC: NOTE: BUILDINGS COMPRISED OF 5 MODULES, OR MORE,
WILL REQUIRE DRAFT STOPPING IN CEILING CAVITY.
DRAFT-STOPPING TO CONSIST OF 3/8" PLYW'D,
OR 1/2" GYPSUM BOARD INSTALLED AT INTERVALS
NOT TO EXCEED 3,000 SQ. FT. --
LONGITUDINAL DRAFT-STOPPING WILL BE INSTALLED
AT INBOARD SIDE OF MATE LINE TRUSSES
NOTE: DRAFT-STOPPING MAY BE FIELD-, OR FACTORY-, INSTALLED
INSTALLATION OF DRAFT-STOPPING WILL BE DEALER'S
RESPONSIBILITY UNLESS BUILDING MFR. IS ADVISED OF
NEED FOR DRAFT-STOPPING WHEN ORDER IS PLACED.
- 14 MISC: DIAGONAL BRACES OF 2x3 SPF # 3, OR BETTER, SPACED 12' O.C.
NOM; INSTALLED FROM RAFTERS TO SIDEWALL ATTACHMENT CHANNELS
- 14a MISC: DIAGONAL BRACES OF 11 GA. OR 1/4"x 1 1/2"x 1 1/2" STEEL ANGLE,
SPACED 12' O.C. NOM; FROM RAFTERS TO BOTTOM CHORD
OF TRUSS @ MATELINES

F-DOORS:

- 1 EXT. DOOR: 36"W x 80"H 18 GA. COMM. INSUL. STEEL W/ 5" X 20"
VISION PANEL (SAFETY GLAZED)
COLOR: SILVERPOINTE, SEMI GLOSS
FRAME THROAT: 4 5/8"
R.O. 37 3/4"W x 80 3/4"H

NOTE: FRAMED OPENING SIZED FOR INSTALLATION OF
DOUBLE COMM. GLASS DOOR -- R.O. 76 1/4"W x 86 1/4"H,
DOUBLE COMM. INSUL. STEEL DOOR -- R.O. 73 3/4"W x 80 3/4"H
SINGLE COMM. GLASS DOOR -- R.O. 40 1/4"Wx86 1/4"H
SINGLE COMM. INSUL. STEEL DOOR -- 37 3/4"W x 80 3/4"H (TO BE INSTALLED IN FACTORY)
SEE DRAWINGS FOR FRAMING DETAILS

HARDWARE:

- a: PANIC (W/EXTERIOR LEVER & KEY CYLINDER)
NOTE: TELL LOCK CYLINDER -- MASTERED KEYED
TO W/S STOCK PROGRAM
b: CLOSER
c: THRESHOLD
d: WEATHERSTRIPPING

- 2 OPENING: **ROUGH OPENING FOR FUTURE DOOR INSTALLATION BY OTHERS**
FRAMED OPENING SIZED FOR INSTALLATION OF
DOUBLE COMM. GLASS DOOR -- R.O. 76 1/4"W x 86 1/4"H,
DOUBLE COMM. INSUL. STEEL DOOR -- R.O. 73 3/4"W x 80 3/4"H
SINGLE COMM. GLASS DOOR -- R.O. 40 1/4"Wx86 1/4"H
SINGLE COMM. INSUL. STEEL DOOR -- 37 3/4"W x 80 3/4"H
SEE DETAIL ON FLOOR PLAN

NOTE: DO NOT CUT OUT VINYL GYP OR SIDING FOR OPENING
(SEE DRAWINGS FOR FRAMING DETAIL)

- 3 INT. DOOR: 36"W X 80"H S.C. WOOD (IMPERIAL OAK)
JANITOR'S R.O. 37 3/4"W X 80 3/4"H (STEEL JAMBS)
CLOSET FRAME THROAT: 5 1/8"
FRAME COLOR: TO MATCH TIMELY "WESTERN WHITE"
(45 MIN. C-LABELLED DOOR & JAMB)

HARDWARE:

- b: CLOSER
a: STORE ROOM SET (LEVER) PART# LC2475CTL 26D-GR2
c: FLOOR MOUNT DOOR STOP,
c: BALL-BEARING HINGES, PART #HG4545BB26D

- 4 INT. DOOR: 36"W X 80"H S.C. WOOD (IMPERIAL OAK)
R'ROOMS R.O. 37 3/4"W X 80 3/4"H (STEEL JAMBS)
FRAME THROAT: 4 5/8"
FRAME COLOR: TO MATCH TIMELY "WESTERN WHITE"
- HARDWARE:
a: PRIVACY SET (LEVER)
c: FLOOR MOUNTED DOOR STOP
d: BALL-BEARING HINGE
- 5 OPENING **ROUGH OPENING FOR FUTURE DOOR INSTALLATION BY OTHERS**
OPENING SIZED FOR FUTURE INSTALLATION OF SINGLE
36" x 80" COMMERCIAL STEEL DOOR; OR COMMERCIAL GLASS
AT END WALL WINDOW LOCATIONS
FRAME OUT FOR STEEL DOOR -- R.O. 37 3/4"W x 80 3/4"H,
FRAME OUT FOR GLASS DOOR -- R.O. 40 1/4"W x 86 1/4"H,
DO NOT CUT OUT VINYL GYP OR SIDING FOR OPENING
(SEE DRAWINGS FOR FRAMING DETAIL)
- 6 INT. DOOR: 36"W X 80"H S.C. WOOD (IMPERIAL OAK)
OPT OFFICE R.O. 37 3/4"W X 80 3/4"H (STEEL JAMBS)
FRAME THROAT: 4 5/8"
FRAME COLOR: TO MATCH TIMELY "WESTERN WHITE"
- HARDWARE:
a: PASSAGE SET (LEVER)
c: FLOOR MOUNTED DOOR STOP
d: BALL-BEARING HINGE

NOTE: ALL DOOR HARDWARE TO BE BY "TELL"

G-WINDOWS:

- 1** **SIZE:** 32"W X 60"H SGL. HUNG ALUM. FRAME (THERMALLY BROKEN)
 WİNTECH SERIES #S250 **FRAME COLOR: BRONZE**
 R.O. 32 1/4"W X 60 1/4"H, UP: 20"
- GLAZING:** DOUBLE INSULATED - LOW "E"
 DESIGN PRESSURE: 2160 Pa (45.0 psf)
- MISC:** 1" MINI BLINDS (ALABASTER)
- MISC:** END WALL WINDOW OPENINGS TO BE SET IN ALTERNATE
 EXTERIOR DOOR FRAMING -- SEE DRAWINGS FOR DETAIL
-
- 1a** **SIZE:** 32"W X 60"H SGL. HUNG ALUM. FRAME (THERMALLY BROKEN)
 WİNTECH SERIES #S250 **FRAME COLOR: BRONZE**
 R.O. 32 1/4"W X 60 1/4"H, UP: 20"
- GLAZING:** DOUBLE INSULATED - CLEAR, SAFETY GLAZING
 DESIGN PRESSURE: 2160 Pa (45.0 psf)
- MISC:** 1" MINI BLINDS (ALABASTER)
- NOTE:** REPLACES STANDARD WINDOW ONLY IF OPTIONAL DOOR INSTALLATION
 ENCROACHES ON MIN. 24" CLEARANCE BETWEEN DOOR EDGE AND WINDOW.

H-ELECTRICAL:

- 1 LOADCENTER: 120/240 V., 1-PHASE, 60 HZ, 3-WIRE,
BR1630B150 PANEL 150 AMP MAIN BREAKER PANEL, TYPICAL ALL SIDEWALL MODULES
BR1224L125 PANEL, 100 AMP MAIN LUG TYPICAL ALL CENTER MOD'S.
NOTE: BOTTOM OF PANEL 36" ABOVE FINISH FLOOR.
- 2 SERV ENT: 1 1/2" EMT THRU FLOOR
- NOTE: ALL SERVICE ENT. WIRING TO BE TYPE THWN COPPER.
MAIN DISTRIBUTION PANEL, &/OR MAIN DISCONNECT SWITCH, TO
BE PROVIDED & INSTALLED BY OTHERS ON SITE--INCLUDING ALL
REQUIRED FEEDER WIRING, CONDUIT, ETC., TO CONNECT FACTORY
INSTALLED LOAD CENTERS.
- 3 WIRING: COPPER (12-2 W/G MIN) TYPE NM-B 90 C
- 3a WIRING: ALL WIRING IN CEILING CAVITY TO BE MC CABLE
w/ INTERLOCKING TAPE SHEATH (#12 MIN WIRE SIZE) -
TYPE THHN CONDUCTORS, GROUND, & NEUTRAL
- 9 INT. LIGHTS: 24" X 48" (2) TUBE FLUOR. (LAY-IN) W/ DIFFUSER
ELECTRONIC BALLAST, T-8 BULBS (28W EACH)
- 9a INT. LIGHTS: 24" X 48" (2) TUBE FLUOR. (LAY-IN) W/ DIFFUSER
(CENTER UNIT ONLY) ELECTRONIC EMERGENCY BALLAST, T-8 BULBS (28W EACH)
NOTE: INSTALL HANGER WIRES AT EACH CORNER OF FIXTURE
NOTE: ALL FLUORESCENT LIGHTS TO HAVE DISCONNECTING MEANS FOR BALLAST MAINTENANCE
- 11 INT. LIGHTS: 60 WATT INCAND. WALL MOUNT FIXTURE SWITCHED -- UP 78" TO TOP
- 13 EXT. LIGHTS: SEAGULL #4325 60 WATT (WEATHERPROOF) W/ PHOTOCELL CONTROL- UP 78" TO TOP
- 13a EXT. LIGHTS: RECESSED W/P SOFFIT LT. -- 60W. INCANDESCENT.
NOTE: THIS LIGHT USED ONLY WHEN DOOR IS INSTALLED IN HITCH END WALL.
- 14 EXT. LIGHTS: PRE-WIRE J-BOX BELOW FLOOR W/ WEATHERPROOF LAMP HOLDER,
ADJACENT OT HEAT TAPE FOR SERVICE LIGHT
***NOTE: RIGHT SIDEWALL RRS LAYOUTS ONLY**
- 19 EGRESS LIGHTS: EXIT/EMERGENCY LIGHT W/ BATTERY PACK & EXTERIOR
REMOTE HEAD (W.P.) - UP 84"
NOTE: EXT. EMERGENCY HEAD FACTORY INSTALLED
NOTE: INSTALL EXTERIOR W/P COVER OVER EXTERIOR REMOTE
HEAD WIRING
- 21 RECEPTS: 125V/20A DUPLEX
UP 18" TO BOTTOM OF BOX UNLESS NOTED

- 22 RECEPTS: 125V/20A DUPLEX (GFI) - UP 48" TO TOP
- 23 RECEPTS: 125V/20A DUPLEX (GFI PROTECTED)- UP 48" TO TOP
- 24 RECEPTS: 125V/20A DUPLEX (GFI PROTECTED, DEDICATED) FOR HEATTAPE
- *NOTE: RECEPTACLES #22-#24 TO BE USED IN RIGHT SIDEWALL RRS LAYOUTS ONLY**
- 25 RECEPTS: 125V/20A DUPLEX (GFI) WEATHER-RESISTANT-IN-USE COVER, UP: 6"A.F.F. TO BOTTOM
- 26 RECEPTS: 125V/20A QUADRUPLX (DEDICATED) FOR WORKSTATIONS, UP 18" TO BOTTOM
- 27 RECEPTS: FLOOR BOX WITH (2) 125V/20A DUPLEX RECEPTS WITH DATA DROP;
1-1/4" EMT TO BELOW FLOOR WITH GROMMET AT OPEN END FOR DATA DROP
LEGRAND EFB45S 4 GANG BOX w/ EFB8-MB MOUNTING PLATE, (2) EBF10-DEC COVER PLATE
(2) EFB10-DP, AND EFB45CTCBZ COVER PLATE**
- NOTE: ALL RECEPTS ARE TO BE GROUNDING TYPE
- 29 SWITCHES: 120V/20A SINGLE-POLE W/ OCCUPANCY SENSOR - UP 48" TO TOP
- 29a SWITCHES: 120V/20A SINGLE-POLE INSTALLED AJACENT TO HEAT TAPE RECEPT FOR SERVICE LIGHT
- *NOTE: RIGHT SIDEWALL RRS LAYOUTS ONLY**
- 33 DATA DROPS: **TWO-GANG JUNCTION BOX, UP 18" -- w/ 1" EMT CONDUIT
CEILING CAVITY -- INSTALL BLANK SINGLE-GANG COVER**
- 34 DATA DROPS: (3) 1-1/4" EMT CONDUITS INSTALLED IN BATH ROOM WALL AT JAN CLOSET - STUB TO
BELOW FLOOR AND INTO CEILING CAVITY**
- 35 FIRE ALARM: ROUGH-IN ONLY FOR PULL STATION -- 2x4 NON-METALLIC BOX
UP 48" TO TOP -- 3/4" PVC CONDUIT TO A/V ROUGH-IN
OR TO CEILING CAVITY -- INSTALL BLANK SINGLE-GANG COVER
- 36 FIRE ALARM: ROUGH-IN ONLY FOR AUDIO/VISUAL DEVICE -- 4x4 NON-METALLIC BOX UP 80" --
3/4" PVC CONDUIT TO CEILING CAVITY --INSTALL BLANK 2-GANG COVER
- NOTE: FIRE ALARM SYSTEM TO BE PROVIDED AND INSTALLED
ON SITE BY OTHERS, NOT BY FACTORY.
- NOTE: ALL CONDUIT ROUGH-INS TO HAVE PULL WIRE OR PULL STRING INSTALLED.
- 40 MISC: **4 1 1/16" SQ. x 2 1/8"D" PRE-WIRED J-BOX
IN CEILING CAVITY -- EACH BOX ON INDIVIDUAL 120V / 20A CIRCUIT**
- 42 MISC: **AIR INFILTRATION GASKETS AT SWITCHES AND RECEPTS**
- 43 MISC: **ROUGH-IN FOR EMERGENCY CALL BUTTON AND VISIBLE ALARM
SYSTEM TO BE SUPPLIED AND INSTALLED BY OTHERS ON SITE.
-CALL BUTTON ROUGH IN UP 42" WITH 1/2" CONDUIT TO CEILING CAVITY
-VISIBLE ALARM ROUGH IN UP 84" TO BOTTOM WITH 1/2" CONDUIT TO CEILING CAVITY
NOTE: EMERGENCY CALL ROUGH INS ONLY INSTALLED IN SINGLE OCC. R/R MOD'S**

J-PLUMBING:

NOTE: SEE FLOOR PLANS -- SOME FIXTURES AND / OR ACCESSORIES USED ONLY WITH SPECIFIC FLOOR PLANS

NOTE: NO WATER LINES TO BE INSTALLED IN FLOOR

- 1 WTR CLST: TANK TYPE W/ ELONGATED BOWL & OPEN FRONT SEAT
1.6 GAL. FLUSH
- 1a WTR CLST H/C: TANK TYPE (H/C) W/ ELONGATED BOWL AND
OPEN FRONT SEAT - UP 18" TO SEAT
1.6 GAL. FLUSH
- NOTE: **FLUSH LEVER FOR H/C WTR. CLST'S. TO BE ON "WIDE SIDE" OF STALL**
- 2 MOD PART: STEEL W/COAT HOOK & SELF-CLOSING DOOR PER CODE
COLOR: HADRIAN # 603 ALMOND
- 3 URINAL SCREEN: STEEL DEPT- 18"
COLOR: HADRIAN # 603 ALMOND
- NOTE: HEADRAIL TO BE INSTALLED AT MODESTY PARTITIONS AND URINAL SCREEN
- 4 URINAL: WALL HUNG W/ FLUSH VALVE & INTEGRAL TRAP
UP 17" TO LIP (H/C)
- 5 LAVATORY: VITREOUS CHINA WALL HUNG UP : 34"
W/ H/C SELF-CLOSING FAUCET PER CODE
- NOTE: LAVATORIES TO BE EQUIPPED w/ SINGLE-FIXTURE TEMPERING VALVE.
HOT WATER TEMPERATURE NOT TO EXCEED 110°F.
- NOTE: INSULATE EXPOSED HOT WATER & DRAIN PIPING UNDER H/C LAV.
20 GALLON ELECTRIC, STORAGE TYPE (1650 W./120V.)
- 6 WTR HTR:
8 SUPPLY: TYPE "L" COPPER
9 DWV: SCHEDULE 40 PVC
9a DWV: SERVICE GRADE CAST IRON (MASS. ONLY)
- NOTE: MULTIPLE DROPS STUBBED THRU FLOOR. INTER-CONNECTING MANIFOLD BY OTHERS ON SITE.
- NOTE: ALL WASTE PIPING DOWNSTREAM OF URINAL TO BE SERVICE WEIGHT CAST IRON
- NOTE: SHIPLOOSE PLUMBING VENT EXTENSIONS, FOR ON-SITE INSTALLATION BY OTHERS.
- 11 Water Cooler PRE-PLUMB FOR HANDICAPED HIGH-LOW WATER COOLER SIDEWALL MODULE HALF BATH AND MULTI-OCCUPANT SIDEWALL RESTROOM MODULES ONLY (INSTALL ACCESSORY APRON ON BOTTOM OF HIGHER FOUNTAIN WHEN MOUNTED ON AN EXPOSED WALL PROVIDING MANDATORY 27" CLEARANCE FROM FLOOR)
- 13 Grab Bars GRAB BARS (SEE FLOOR PLAN)
SIDE BAR: 42"L BACK BAR: 42"L
AND 18" VERTICAL GRAB BAR ABOVE SIDEWALL GRAB BAR
GRAB BARS ARE UP 33"H CENTER
- 13a Grab Bars SWING AWAY/UP GRAB BAR (SEE SKETCH) PER CODE
- 14 Mirror 18"Wx36"H STAINLESS STEEL EDGED MIRROR - UP 40"
- 15 TP Disp TOILET PAPER DISPENSER - UP 24"
- 16 Utility Sink FIBERGLASS UTILITY SINK, w/ LEGS
- 17 Flr Drain PVC FLOOR DRAIN 3" DIA. WITH TRAP PRIMER
- 17a Flr Drain CAST IRON FLOOR DRAIN 3" DIA. (MASS. ONLY) WITH TRAP PRIMER
- NOTE: FLOOR DRAINS REQUIRED AT MULTI-FIXTURE RESTROOMS ONLY
- NOTE: DEEP (4"MIN.) SEAL TRAP TO BE PROVIDED & INSTALLED BY OTHERS ON SITE
- 19 Hose Bibb EXTERIOR FROST PROOF HOSE BIBB (WITH VACUUM BREAKER AND BACKFLOW PREVENTER) UP 4" A.F.F.
- 19a Hose Bibb INTERIOR HOSE BIBB (WITH VACUUM BREAKER AND BACKFLOW PREVENTER) UP 4" A.F.F.
(INT. HOSE BIB REQUIRED AT MULTI-FIXTURE UNITS ONLY)
- NOTE: CROSS-SEAM SUPPLY LINES, FTGS., & INSTALLATION OTHERS ON SITE.

K-H.V.A.C.

- 1 HEATING/COOLING: BARD 2.5T COOLING, 10kW HEATING 10.00 EER UNITS
 (SIDEWALL UNITS) BARD BRAND (FRONT DISCHARGE)
- 1a HEATING/COOLING: BARD 2.5T COOLING, 10kW HEATING 10.00 EER UNITS
 (CENTER UNITS) BARD BRAND (FRONT DISCHARGE)
 AIR CONDITIONER w/ ELECTRIC HEAT
- NOTE: OUTDOOR INTAKE AIR DAMPER TO BE IN CLOSED POSITION
 FOR SHIPPING.
- NOTE: INTAKE AIR DAMPER MUST BE ADJUSTED ON SITE FOR
 PROPER AIRFLOW -- SEE HVAC UNIT OPERATING INSTRUCTIONS.
- 3 SUPPLY DUCT: SINGLE 13/16" FIBERGLASS DUCTBOARD IN CEILING CAVITY
- NOTE: HOLD 12" MIN. CLEAR BETWEEN MAIN S/A AND R/A DUCTS**
- 3a SUPPLY DUCT: 8" FLEX INSUL. FLEX DUCT SUPPLY BRANCH- FACTORY
 INSTALLED. **ALL FLEX SUPPLY BRANCHES 10' LONG.**
- 4 DIFFUSERS: 24"x24", PERFORATED FACE HART & COOLEY #PDS,
 LAY-IN W/ADJ. DAMPER (CEILING)
- 5 RETURN AIR DUCT: SINGLE 13/16" FIBERGLASS DUCTBOARD IN CEILING CAVITY
- NOTE: HOLD 12" MIN. CLEAR BETWEEN MAIN S/A AND R/A DUCTS**
- 5a RETURN AIR DUCT: **8" DIA. FLEX RETURN AIR BRANCH. ALL FLEX RETURN BRANCHES 10' LONG.**
- 6 R/A GRILLES: 24"x24", PERFORATED FACE, LAY-IN (CEILING) NO DAMPER
- 7 EXH FAN: 100 CFM (CEILING MOUNT) - RT. S/W MODULE w/ HALF-BATHS
- 7a EXH. FAN: 180 CFM (CEILING MOUNT) - RT. S/W MODULE w/ MULTI-OCCUPANT R'RM's.
- 10 THERMOSTAT: FOR CENTRAL H.V.A.C. UNIT **Robert Shaw – 2200NC 2H/1C Programmable – 06233725**
 (PROGRAMMABLE)

L-FURNITURE & INTERIOR FURNISHINGS: NONE

M-MISCELLANEOUS:

- 1 SHIPPING PREP: WRAP BARD UNIT & ALL END WALLS w/ VISQUEEN -- ALL UNITS,
 ALL WEATHER.
 WRAP BARDS AND **ALL** EXTERIOR WALLS IN FALL & WINTER
- 2 SHIP LOOSE: EXTERIOR & INTERIOR MATELINE CLOSE-UP MATERIAL
 SHIPPED LOOSE FOR INSTALLATION BY OTHERS @ SITE.
- NOTE: SIDE WALL MODULES TO HAVE SHIP LOOSE MATERIAL FOR (1) MATE LINE
CENTER MODULES TO HAVE SHIP LOOSE MATERIAL FOR (1) MATE LINE

TRIM PACKAGE #3

NOTE: INSTALL WINDOW JAMB & TRIM

SHIP LOOSE ALL INSIDE & OUTSIDE CORNER TRIM IF FLOORING NOT INSTALLED;

SHIP LOOSE 3" BATTENS FOR MATE LINE SEAM CLOSURES

BASE MOLDING: 4" VINYL COVE BASE (where optional floor tile is installed)
COLOR: SOFT WHITE

BASE MOLDING: 6" VINYL COVE BASE (in wet areas)
COLOR: SOFT WHITE

BASE MOLDING: AREAS WITH SITE INSTALLED FLOORING- PROVIDED AND INSTALLED BY OTHERS ON SITE

INSIDE CORNER: VINYL COVERED TRI-MOLD (MATCH GYPSUM)

OUTSIDE CORNER: VINYL COVERED TRI-MOLD (MATCH GYPSUM)

MATE LINES: 3" VINYL COVERED BATTENS (MATCH GYPSUM)

PANEL SEAMS (WALLS): NONE

WALL @ CEILING: SUSPENDED CEILING WALL ANGLE, WHITE

CEILING: SUSPENDED CEILING TEE GRID, WHITE

EXT. DOOR JAMB/TRIM: PAINTED STEEL,
COLOR: SILVERPOINTE

INT. DOOR JAMB/TRIM: PAINTED STEEL,
COLOR: WESTERN WHITE

WINDOW JAMB: 5/8" PRE-PAINTED JAMB STOCK

WINDOW TRIM: 2 1/4" RANCH MOLDING (PRE-PAINTED)

ALL PRE-PAINTED WOOD COLOR: #CV TAN

UNIT LABELS:

THIRD-PARTY LABEL, M.B.I. LABEL, AND STATE LABELS OF:
CONNECTICUT INDIANA
ILLINOIS, NEW JERSEY (IBC)
NEW HAMPSHIRE MASSACHUSETTS (DOES NOT MEET STRETCH ENERGY CODE)
NORTH CAROLINA VIRGINIA,
RHODE ISLAND (IBC) MICHIGAN (RESTRICTED TO CLIMATE ZONE 5A)
OHIO, SOUTH CAROLINA
DATA PLATES AND LABELS LOCATED ON HITCH ENDWALL
ABOVE WINDOW ABOVE SUSPENDED CEILING

STENCIL SERIAL NUMBER ON HITCH & FRONT CROSS-MEMBER

NOTE: MASSACHUSETTS (N.E. REGION UNITS ONLY)
MICHIGAN (MIDWEST REGION UNITS ONLY)

DECAL TYPE:

NONE

SEALED DRAWINGS:

THIRD PARTY, OHIO ARCHITECT, OHIO I.U. SECTION
MARYLAND REGISTERED ENGINEER, INDIANA ENGINEER
ILLINOIS ARCHITECT, DELEWARE ENGINEER FOR COMPLIANCE
PENNSYLVANIA ENGINEER FOR COMPLIANCE, SOUTH CAROLINA ENGINEER

MODEL APPROVAL:

THIRD PARTY, AND STATES OF:
CONNECTICUT NEW JERSEY (IBC)
MASSACHUSETTS DELEWARE (COMPLIANCE ONLY)*
ILLINOIS, PENNSYLVANIA (COMPLIANCE ONLY)*
INDIANA RHODE ISLAND (IBC)
MARYLAND VIRGINIA,
OHIO, NORTH CAROLINA
NEW HAMPSHIRE MICHIGAN

* INDICATES STATE REQUIRING "SITE-SPECIFIC" SUBMITTAL.
THIRD-PARTY WILL REVIEW FOR COMPLIANCE TO STATE CODES, FOR THESE
STATES, BUT NO ACTUAL STATE SUBMITTAL WILL BE MADE -- UNLESS A
SPECIFIC BUILDING IS TO BE PLACED ON A SPECIFIC SITE, IN ONE OF THESE STATES.

BUILDING INFORMATION:

BUILDING USE GROUP ----- B (BUSINESS)
TYPE OF CONSTRUCTION ----- 5B/ VB (WOOD FRAME - UNPROTECTED)
SQUARE FOOTAGE ----- 705 SQ FT, PER MODULE
OCCUPANT LOAD OF BUILDING ----- 7 , OR LESS -- PER MOD. -- USE GROUP "B"
NOTE: TOTAL BUILDING SQUARE FOOTAGE VARIES WITH NUMBER OF MODULES
NOTE: TOTAL BUILDING OCCUPANT LOAD VARIES WITH NUMBER OF MODULES

BUILDING DESIGN LOADS:

FLOOR LIVE LOAD UNIFORM ----- 100 PSF
FLOOR LIVE LOAD CONCENTRATED ----- 2000 LBS
FLOOR IMPACT LOAD ----- N/A LBS
FLOOR LIVE LOAD (CORRIDOR)----- 100 PSF
FLOOR DEAD LOAD ----- 10 PSF
ROOF LIVE LOAD (SNOW) ----- 60 PSF
GROUND SNOW LOAD ----- 60 PSF
ROOF DEAD LOAD ----- 10 PSF
FLAT ROOF SNOW LOAD ----- 49 PSF
SNOW EXPOSURE FACTOR ----- 1.00
SNOW LOAD IMPORTANCE FACTOR ----- 1.00
THERMAL FACTOR ----- 1.00
RAIN ON SNOW SURCHARGE LOAD ----- N/A
WIND SPEED Vult----- 120 MPH
WIND SPEED Vasd----- 93 MPH
WIND IMPORTANCE FACTOR ----- 1.00
BUILDING CATEGORY ----- II
WIND EXPOSURE ----- C
DESIGN WIND PRESSURE ----- 26.63 PSF HORIZONTAL PRESSURE
-20.64 PSF VERTICAL UPLIFT
SEISMIC IMPORTANCE FACTOR ----- 1.00
SPECTRAL RESPONSE COEFFICIENT S_{DS} ----- 0.28
SPECTRAL RESPONSE COEFFICIENT S_{D1} ----- 0.068
SITE CLASS ----- D
SEISMIC DESIGN CATEGORY ----- B

WHITLEY MANUFACTURING CO., INC.
ELECTRICAL LOAD CALCULATION

MODEL # 7111 2020-034-WP
 PANEL # L (LEFT SIDEWALL)
 SERVICE TYPE:
 1 -PHASE,
 240 VOLTS

UNIT WIDTH: 11.75 FT.
 UNIT LENGTH: 60 FT.
 TOTAL SQUARE FOOTAGE: 705 SQ. FT
 TOTAL CALCULATED LIGHTING LOAD: 2467.5 WATTS
 TOTAL CONNECTED LIGHTING LOAD: 861 WATTS
 TOTAL WATTS (w/ FACTOR) FOR LOADCENTER: 22927.5 WATTS

MAIN BREAKER PANEL #BR1630B150, WITH 150 AMP MAIN BREAKER INSTALLED

WIRE SIZE	PNL. #	CIRC #	BRKR. SIZE	DESCRIPTION	DEVICE QTY	PHASE A	PHASE B	WATTAGE OF DEVICE	TOTAL WATTS	FACTOR NEC 210-22c	TOTAL WATTS w/ FACTOR
#12	L -1		20A/1P	2-T8 28W /ELEC. BLLST. EXIT/EMERGENCY LT.	10	581.0		58	581	1.25	726
					1	48.0		48	48	1.25	60
#12	L -2		20A/1P	RECEPTS EXEC. GRADE EXT. LT.	7	1260.0		180	1260	1.00	1260
					1	60.0		60	60	1.25	75
#12	L -3		20A/1P	DESK (FLOOR BOX)	1		840.0	840	840	1.00	840
#12	L -4		20A/1P	20A/120V DED. RECPT	1		1920.0	1920	1920	1.00	1920
#12	L -5		20A/1P	DESK (WALL QUAD)	1	840.0		840	840	1.00	840
#6	L -6		60A/2P	HVAC 2.5T/10KW, 1PH	1	5568.0		5568	5568	1.25	6960
#12	L -7		20A/1P	DESK (WALL QUAD)	1		840.0	840	840	1.00	840
#6	L -8		-----	HVAC 2.5T/10KW, 1PH	1		5568.0	5568	5568	1.25	6960
#12	L -9		20A/1P	DESK (FLOOR BOX)	1	840.0		840	840	1.00	840
-----	L -10		N/A	UNUSED SPACE	0	0.0		0	0	1.00	0
-----	L -11		N/A	UNUSED SPACE	0		0.0	0	0	1.00	0
-----	L -12		N/A	UNUSED SPACE	0		0.0	0	0	1.00	0
-----	L -13		N/A	UNUSED SPACE	0	0.0		0	0	1.00	0
-----	L -14		N/A	UNUSED SPACE	0	0.0		0	0	1.00	0
-----	L -15		N/A	UNUSED SPACE	0		0.0	0	0	1.00	0
-----	L -16		N/A	UNUSED SPACE	0		0.0	0	0	1.00	0

 TOTAL WATTAGE, PHASE "A"= 9197.0 WATTS
 TOTAL WATTAGE, PHASE "B"= 9168.0 WATTS

TOTAL ACTUAL WATTAGE: 18365.0
 (1-PHASE) ----- = 76.5 AMPS X 125 % MULTIPLIER* = 95.5 AMP's. TOTAL CALCULATED
 240 Volts *(continuous loads only) **150 AMP. MAIN BREAKER SIZE**

NOTES:

- The ID # is intended to identify a specific circuit breaker or location inside the loadcenter.
- Circuits shall be balanced between phases as near as possible in accordance with N.E.C.

WHITLEY MANUFACTURING CO., INC.
ELECTRICAL LOAD CALCULATION

MODEL # 7111 2020-034-WP
MOD # C (CENTER MODULE)
SERVICE TYPE:
1 -PHASE,
240 VOLTS

UNIT WIDTH: 11.75 FT.
UNIT LENGTH: 60 FT.
TOTAL SQUARE FOOTAGE: 705 SQ. FT
TOTAL CALCULATED LIGHTING LOAD: 2467.5 WATTS
TOTAL CONNECTED LIGHTING LOAD: 726 WATTS
TOTAL WATTS (w/ FACTOR) FOR LOADCENTER: 23647.5 WATTS

BACK-FED MAIN LUG PANEL #BR1224L125, WITH 100 AMP MAIN BREAKER INSTALLED IN BRANCH POSTION

WIRE SIZE	MOD. #	CIRC #	BRKR. SIZE	DESCRIPTION	DEVICE QTY	PHASE A	PHASE B	WATTAGE OF DEVICE	TOTAL WATTS	FACTOR NEC 210-22c	TOTAL WATTS w/ FACTOR
		C -1	-----	MAIN	0	0.0		0	0	0.00	0
#12		C -2	20A/1P	DESK (WALL QUAD)	1	840.0		840	840	1.00	840
		C -3	-----	MAIN	0		0.0	0	0	0.00	0
		C -4	20A/1P	DESK (WALL QUAD)	1		840.0	840	840	1.00	840
#12		C -5	20A/1P	RECEPTS	2	360.0		180	360	1.00	360
				EXT. GFI RECPT.	1	180.0		180	180	1.00	180
#12		C -6	20A/1P	DESK (WALL QUAD)	1	840.0		840	840	1.00	840
#12		C -7	20A/1P	2-T8 28W /ELEC. BLLST.	9		522.9	58	523	1.25	654
				2-T8 28W /EMER. BLLST.	1		58.1	58	58	1.25	73
#12		C -8	20A/1P	DESK (WALL QUAD)	1		840.0	840	840	1.00	840
-----		C -9	N/A	UNUSED SPACE	0	0.0		0	0	1.00	0
#6		C -10	60A/2P	HVAC 2.5T/10KW, 1PH	1	5568.0		5568	5568	1.25	6960
#12		C -11	20A/1P	DESK (FLOOR BOX)	1		840.0	840	840	1.00	840
#6		C -12	-----	HVAC 2.5T/10KW, 1PH	1		5568.0	5568	5568	1.25	6960
#12		C -13	20A/1P	DESK (FLOOR BOX)	1	840.0		840	840	1.00	840
#12		C -14	20A/1P	DESK (FLOOR BOX)	1	840.0		840	840	1.00	840
#12		C -15	20A/1P	DESK (FLOOR BOX)	1		840.0	840	840	1.00	840
-----		C -16	N/A	UNUSED SPACE	0		0.0	0	0	1.00	0

TOTAL WATTAGE, PHASE "A"= 9468.0 WATTS
TOTAL WATTAGE, PHASE "B"= 9509.0 WATTS

TOTAL ACTUAL WATTAGE: 18977.0
(1-PHASE) ----- = 79.1 AMPS X 125 % MULTIPLIER* = 98.5 AMP's. TOTAL CALCULATED
240 Volts *(continuous loads only) **100 AMP. MAIN BREAKER SIZE**

NOTES:

- The ID # is intended to identify a specific circuit breaker or location inside the loadcenter.
- Circuits shall be balanced between phases as near as possible in accordance with N.E.C.

WHITLEY MANUFACTURING CO., INC.
ELECTRICAL LOAD CALCULATION

MODEL # 7111 2020-034-WP
MOD # R3 RIGHT SIDE WALL, SINGLE-OCCUPANT RRM'S
SERVICE TYPE:
1 -PHASE,
240 VOLTS

UNIT WIDTH: 11.75 FT.
UNIT LENGTH: 60 FT.
TOTAL SQUARE FOOTAGE: 705 SQ. FT
TOTAL CALCULATED LIGHTING LOAD: 2467.5 WATTS
TOTAL CONNECTED LIGHTING LOAD: 936 WATTS
TOTAL WATTS (w/ FACTOR) FOR LOADCENTER: 22767.6 WATTS

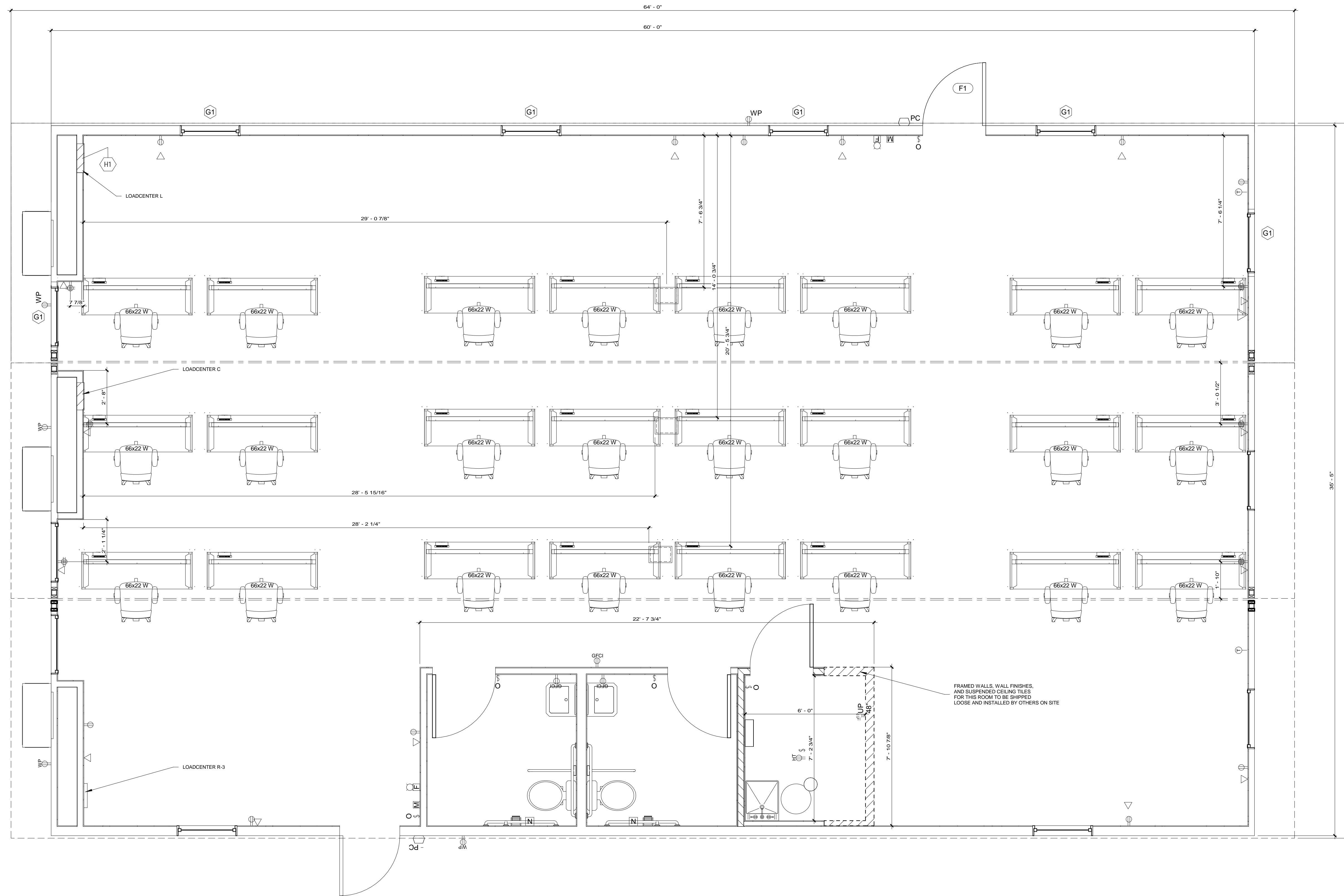
WIRE SIZE	MOD. #	CIRC #	BRKR. SIZE	DESCRIPTION	DEVICE QTY	PHASE A	PHASE B	WATTAGE OF DEVICE	TOTAL WATTS	FACTOR NEC 210-22c	TOTAL WATTS w/ FACTOR
#12	R3	-1	20A/1P	RECEPTS	4	180.0		180	720	1.00	720
				EXEC. GRADE EXT. LT.	1	60.0		60	60	1.25	75
#12	R3	-2	20A/1P	2-T8 28W /ELEC. BLLST.	1	58.1		58	58	1.25	73
				100 CFM EXH. FAN	1	88.8		89	89	1.00	89
				RECEPTS	3		180.0	180	540	1.00	540
#12	R3	-3	20A/1P	EXIT/EMERGENCY LT.	1		48.0	48	48	1.25	60
				2-T8 28W /ELEC. BLLST.	8		58.1	58	465	1.25	581
#12	R3	-4	20A/1P	60W INCAND. LT.	1		60.0	60	60	1.25	75
				2-T8 28W /ELEC. BLLST.	1		58.1	58	58	1.25	73
				100 CFM EXH. FAN	1		88.8	89	89	1.00	89
				RECEPTS	1		180.0	180	180	1.00	180
#12	R3	-5	20A/1P	HEATTAPE RECEPT.	1	600.0		600	600	1.00	600
-----	R3	-6	N/A	UNUSED SPACE	0	0.0		0	0	1.00	0
-----	R3	-7	N/A	UNUSED SPACE	0		0.0	0	0	1.00	0
-----	R3	-8	N/A	UNUSED SPACE	0		0.0	0	0	1.00	0
#12	R3	-9	20A/1P	20 GALLON W.H.	1	1650.0		1650	1650	1.25	2063
#6	R3	-10	60A/2P	HVAC 2.5T/10KW, 1PH	1	5568.0		5568	5568	1.25	6960
-----	R3	-11	N/A	UNUSED SPACE	0		0.0	0	0	1.00	0
#6	R3	-12	-----	HVAC 2.5T/10KW, 1PH	1		5568.0	5568	5568	1.25	6960
#12	R3	-13	20A/1P	EXT. GFI RECPT.	1	180.0		180	180	1.00	180
#12	R3	-14	20A/1P	SPARE 20A/1P	1	0.0		0	0	1.00	0
#12	R3	-15	20A/1P	QUAD (DATA RACK)	1		1920.0	1920	1920	1.00	1920
#12	R3	-16	20A/1P	SPARE 20A/1P	1		0.0	0	0	1.00	0

*NOTE: HEATTAPE CIRCUIT BREAKER TO BE GFEP PER NEC 477.22

TOTAL WATTAGE, PHASE "A"= 8384.9 WATTS
TOTAL WATTAGE, PHASE "B"= 8161.0 WATTS

TOTAL ACTUAL WATTAGE: 17852.6
(1-PHASE) ----- = 74.4 AMPS X 125 % MULTIPLIER* = 94.9 AMP's. TOTAL CALCULATED
240 Volts *(continuous loads only) **150 AMP. MAIN BREAKER SIZE**

- The ID # is intended to identify a specific circuit breaker or location inside the loadcenter.
- Circuits shall be balanced between phases as near as possible in accordance with N.E.C.



Legend

[Symbol]	H1
[Symbol]	H8
[Symbol]	H13
[Symbol]	H19
[Symbol]	H21
[Symbol]	H25
[Symbol]	H29
[Symbol]	H30
[Symbol]	H32
[Symbol]	H33
[Symbol]	H35
[Symbol]	H36
[Symbol]	K4
[Symbol]	K6
[Symbol]	K8
[Symbol]	D4b
[Symbol]	K10

No.	Description	Date	No.	Description	Date

THIS DRAWING AND ALL INFORMATION CONTAINED HEREON IS THE PROPERTY OF WHITLEY MFG. CO. INC. AND IS NOT TO BE REPRODUCED WITHOUT THE EXPRESS PERMISSION OF WHITLEY MFG. CO. INC. WHITLEY MFG. CO. INC. ASSUMES NO RESPONSIBILITY FOR UNAUTHORIZED USE OF THIS DRAWING.

WM
WHITLEY MANUFACTURING

201 WEST FIRST STREET
P.O. BOX 486
SOUTH WHITLEY, IN 46787
PHONE: 260.723.5131
FAX: 260.723.6396
www.whitleyman.com

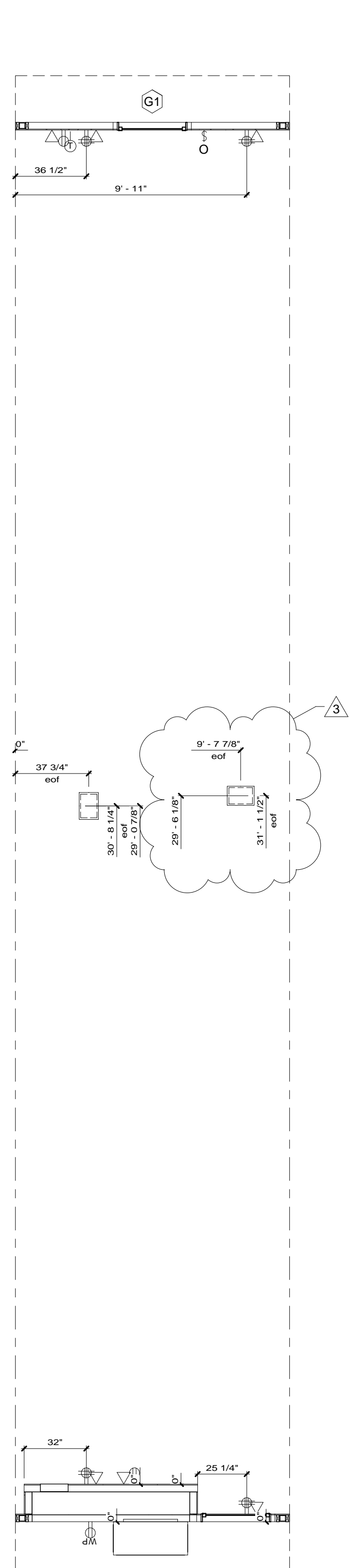
dba: Whitley East
64 HESS ROAD
LEOLA, PA 17040
PHONE: 717.656.2081
www.whitleyman.com

dba: Modular Builders
2756 FORT WAYNE ROAD
P.O. BOX 606
ROCHESTER, IN 46975
PHONE: 574.223.4934
www.whitleyman.com

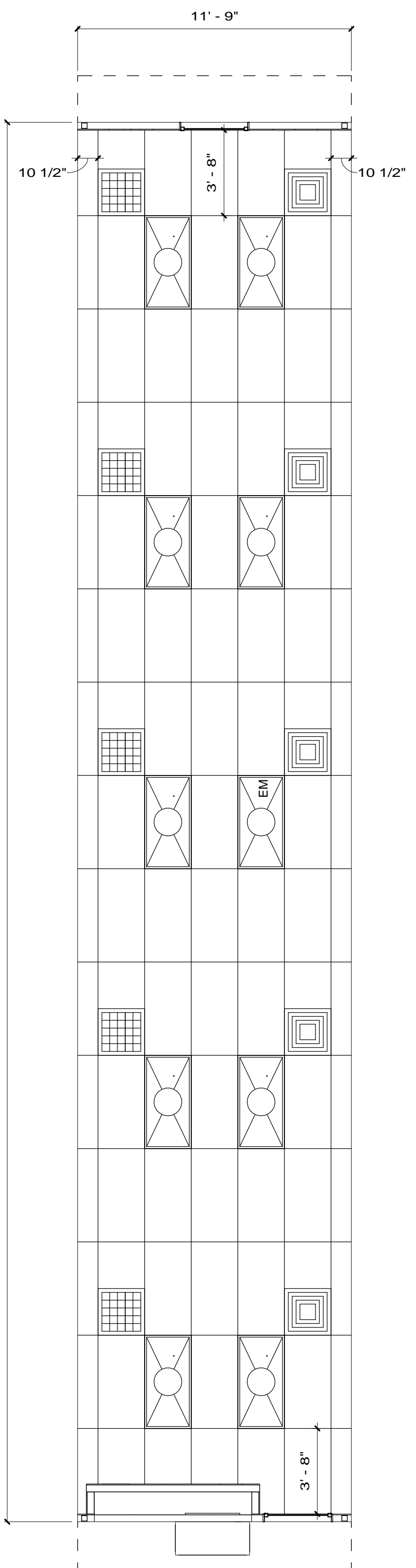
Drawn By: EP
Checked By: CK
Rev:

FLOOR PLAN
MGI
USSS TRIPLE WIDE
64'-0"x12" (60'-0"x11'-9" MODULE)

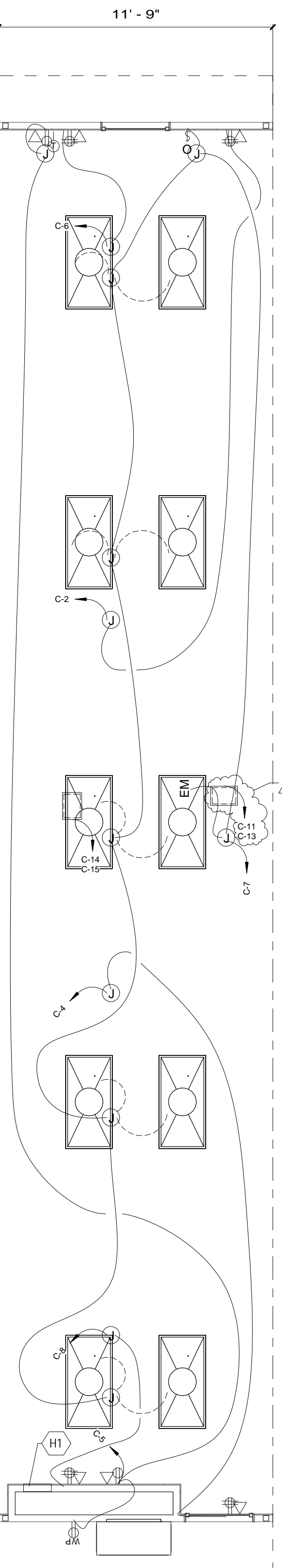
Serial No.	09.25.2020
Quote No.	As indicated
Model No.	7111(3)
Job No.	2020-034-WP
Page No.	A2.1



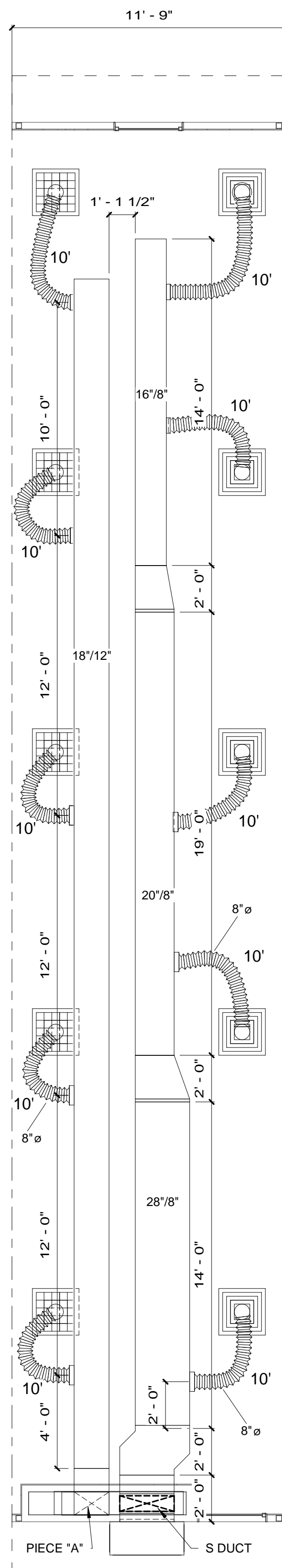
1 Floor Plan
1/4" = 1'-0"



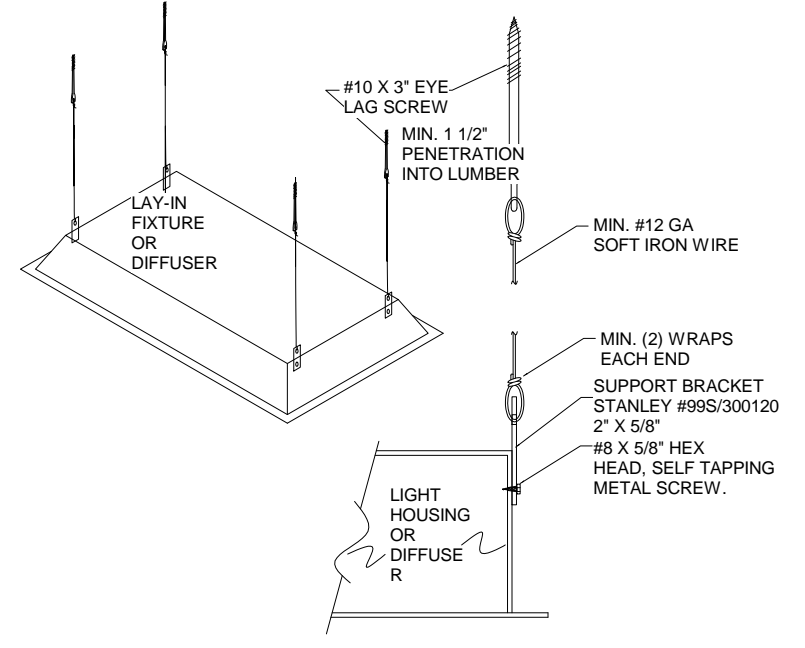
2 Ceiling Plan
1/4" = 1'-0"



3 Electrical Plan
1/4" = 1'-0"



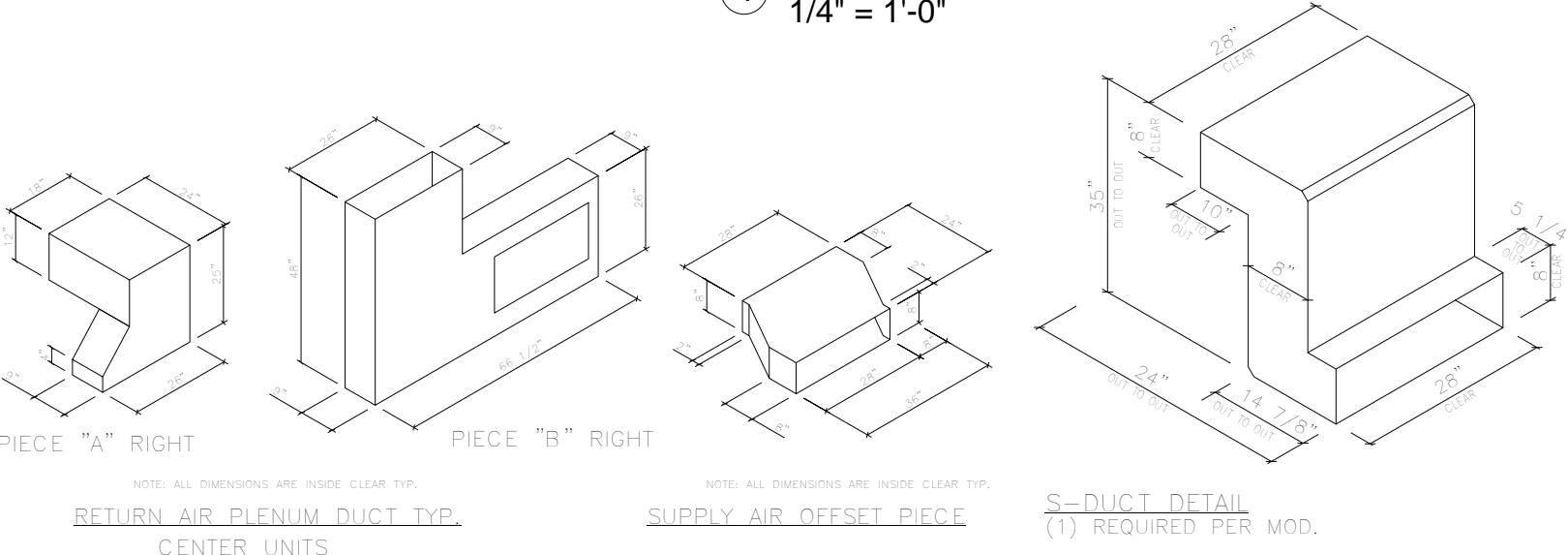
4 HVAC Plan
1/4" = 1'-0"



6 Light Support detail
3/8" = 1'-0"

No.	Description	Date	No.	Description	Date
1	Added electrical devices per MGI	09.25.2020			
2	Revised location of floor boxes and receptacles per customer	10.01.2020			
3	Rotated floor box to avoid interference with axle/existing framing.	10.12.2020			

Note: Identification hexagons on the drawings and in the symbol legend correspond to the project specifications. The letter in the hexagon matches the specification section, the number in the hexagon matches the section number. * denotes items only in right sidewall modules with restrooms



CENTER MODULE

FLOOR/REFLECTED CEILING/ELECTRICAL/MECHANICAL PLANS
MGI
USSS TRIPLE WIDE
64'x12' (60'-0"x11'-9" MODULES)

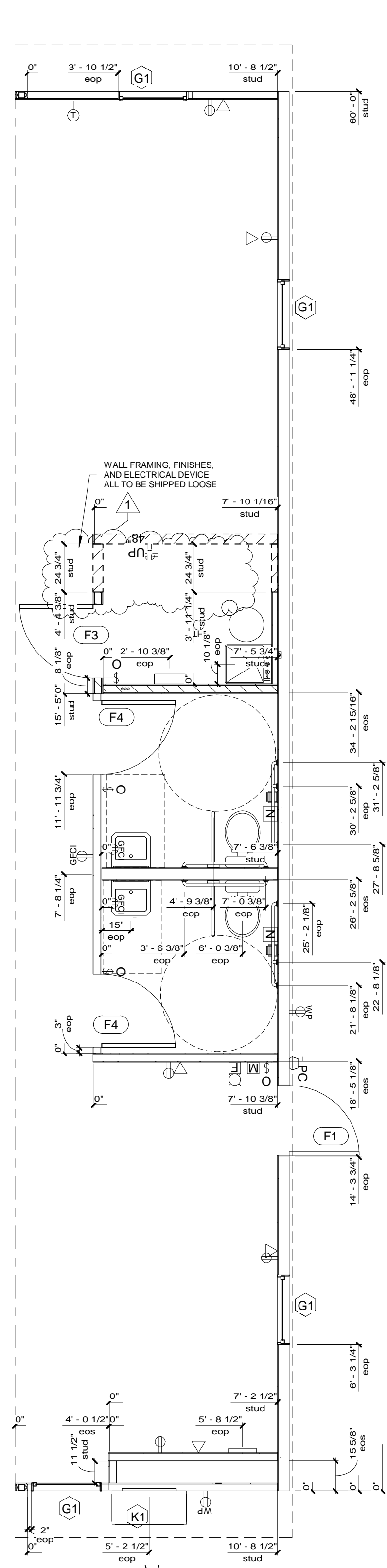
Serial No. 12/22/2020 Date: 7:38:42 AM
see work order
Quote No. RP 2015 REV3 As indicated
Model No. 7111 Page No.
Job No. A2.1c.

THIS DRAWING AND ALL INFORMATION CONTAINED HEREON IS THE PROPERTY OF WHITLEY MFG. CO., INC. AND IS NOT TO BE REPRODUCED WITHOUT THE EXPRESS PERMISSION OF WHITLEY MFG. CO., INC. WHITLEY MFG. CO., INC. ASSUMES NO RESPONSIBILITY FOR UNAUTHORIZED USE OF THIS DRAWING.

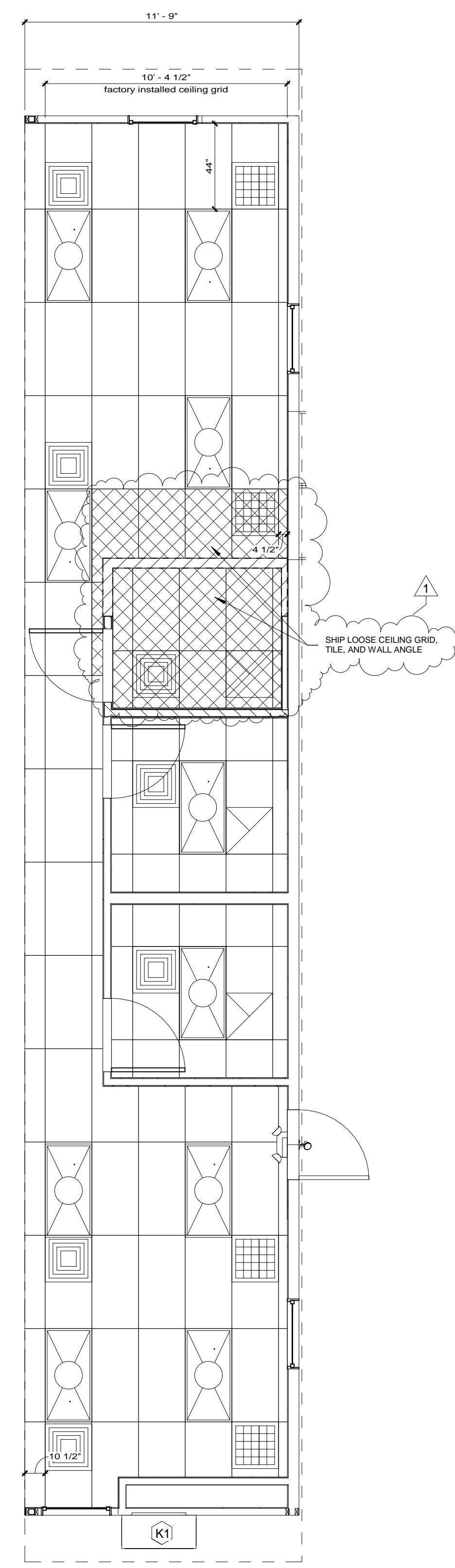


Whitley East, LLC
64 HESS ROAD
LEOLA, PA 17540
PHONE: 717.656.2081
www.whitleyman.com

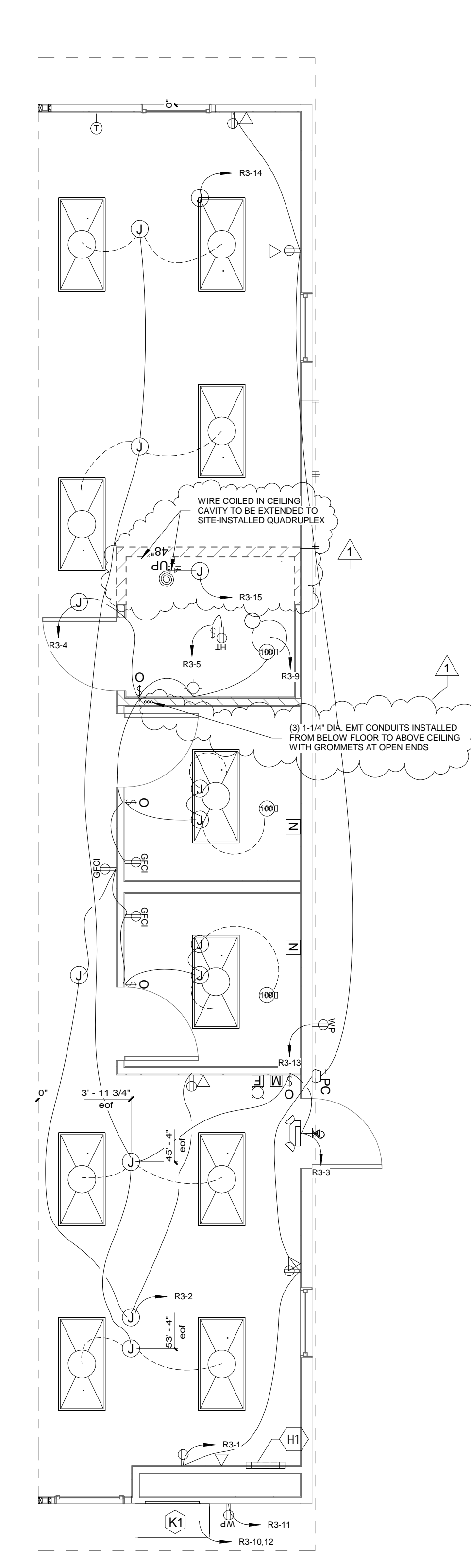
Drawn By: EP
Checked By: CZWS
Rev: 3



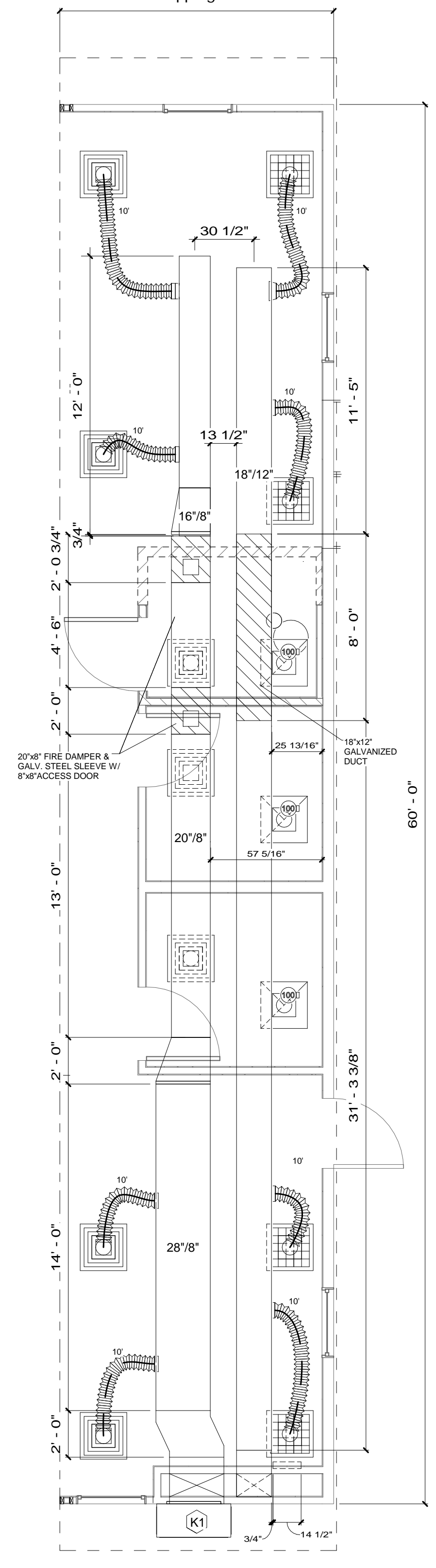
1 Floor Plan
1/4" = 1'-0"



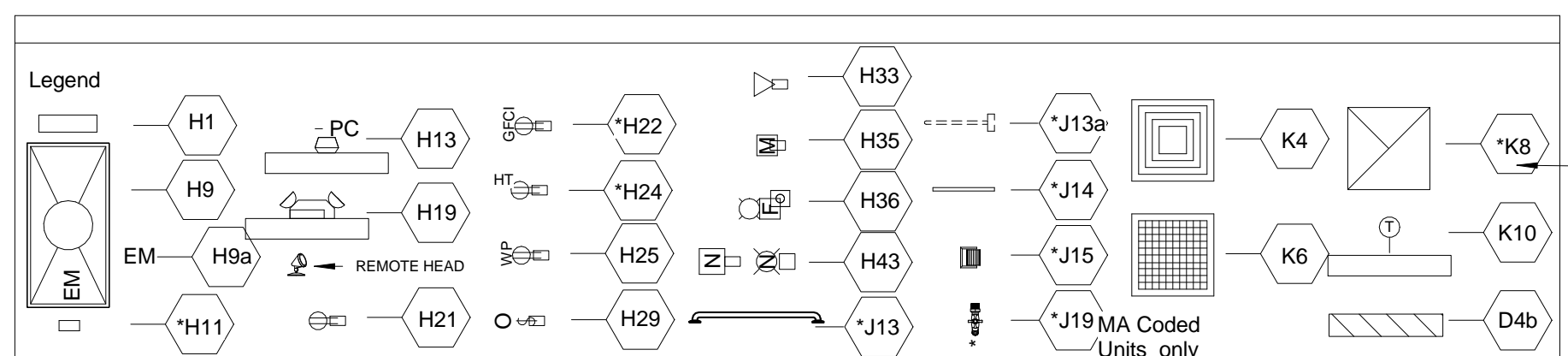
3 Ceiling Plan
1/4" = 1'-0"



2 Electrical Plan
1/4" = 1'-0"

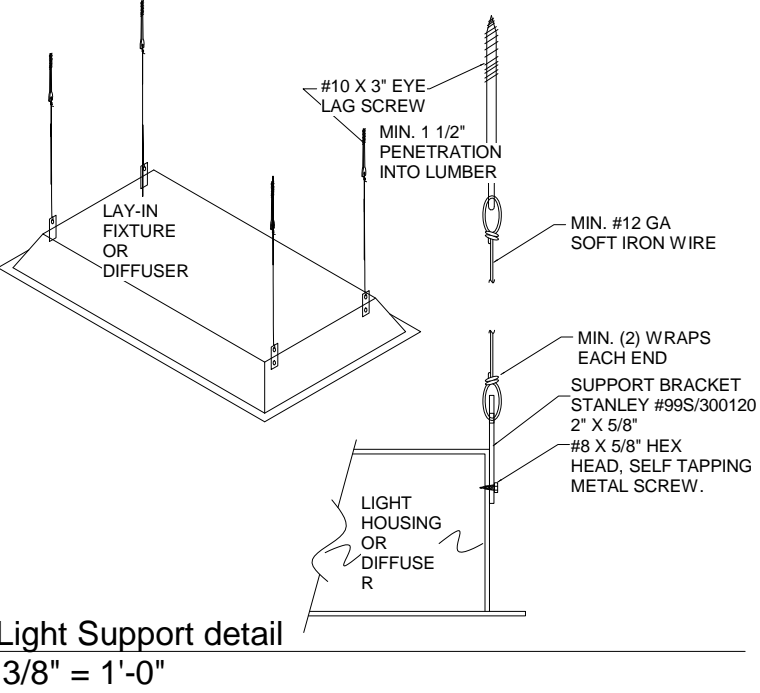


4 Mechanical Plan
1/4" = 1'-0"

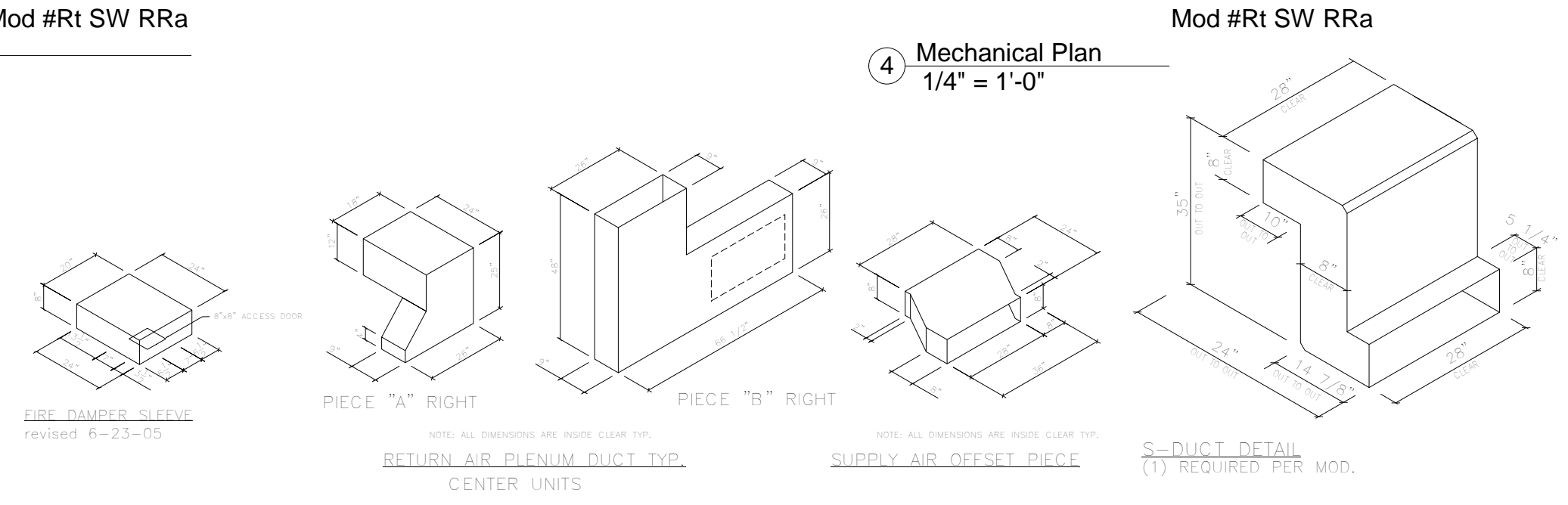


Note: Identification hexagons on the drawings and in the symbol legend correspond to the project specifications. The letter in the hexagon matches the specification section, the number in the hexagon matches the section number. * denotes items only in right sidewall modules with restrooms

GA FILE NO. WP 3341
GYPSUM WALLBOARD, WOOD STUDS
Baselayer 1/4" gypsum wallboard applied parallel to each side of 2 x 4 wood studs 16" o.c. with 4d coated nails. 1 1/2" long, 0.099" shank, 1/4" heads, 12" o.c. Joints staggered 16" on opposite sides. Face layer 1/2" type X plain or predecorated gypsum wallboard or gypsum veneer base applied parallel to each side with 1/4" beads of adhesive 2" o.c. and 6d coated nails, 1 7/8" long, 0.0915" shank, 1/4" heads, 6" o.c. at top and bottom plates only. Offset joints 24" from base layer joints.
(LOAD-BEARING)



7 Light Support detail
3/8" = 1'-0"



No.	Description	Date	No.	Description	Date
1	Added ship loose partitions, and quadruplex receptacle per MGI	09.25.2020			

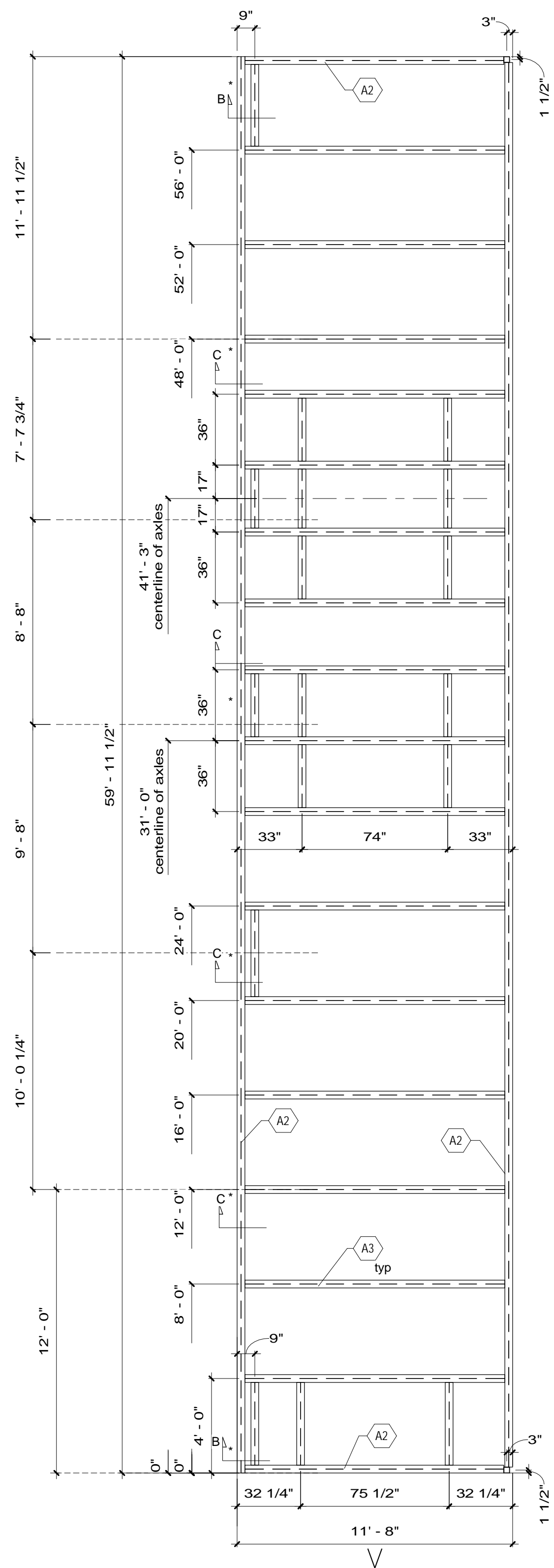
THIS DRAWING AND ALL INFORMATION CONTAINED HEREON IS THE PROPERTY OF WHITLEY MFG. CO., INC. AND IS NOT TO BE REPRODUCED WITHOUT THE EXPRESS PERMISSION OF WHITLEY MFG. CO., INC. WHITLEY MFG. CO., INC. ASSUMES NO RESPONSIBILITY FOR UNAUTHORIZED USE OF THIS DRAWING.

Whitley East, LLC
64 HESS ROAD
LEOLA, PA 17540
PHONE: 717.656.2081
www.whitleyman.com

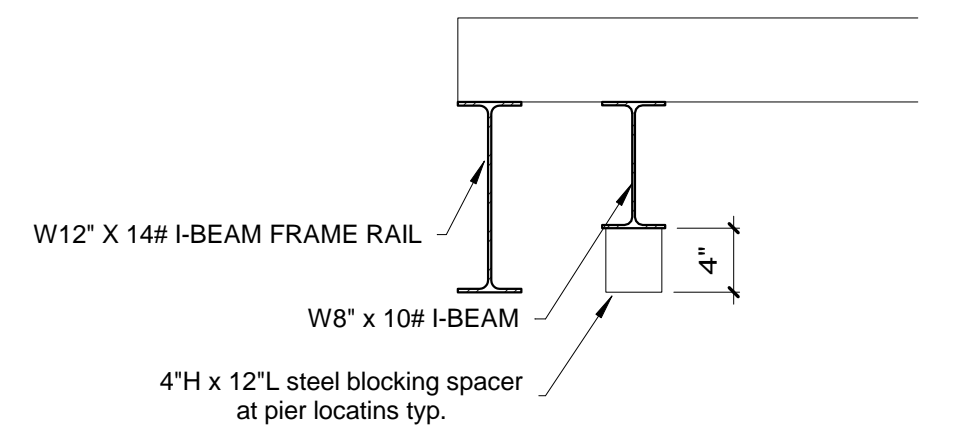
Drawn By: EP
Checked By: CZ/WS
Rev: 1

RIGHT SIDEWALL- SINGLE OCCUPANT RESTROOM OPTION
FLOOR/REFLECTED CEILING/ELECTRICAL/MECHANICAL
PLAN
MGI
USSS TRIPLE WIDE
(2) SETS OF (3) 12X60 MODULES

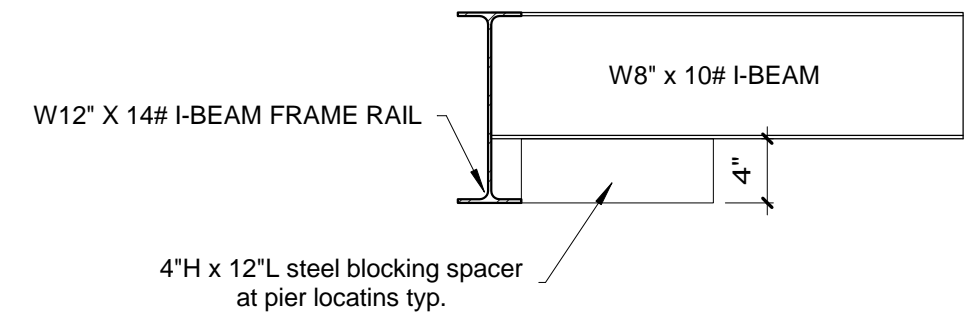
Serial No. 2312-13
Quote No. 7111
Model No. 2020-034-WP
Date: 12/22/2020 7:38:07 AM
Scale: As indicated
Page No. A2.1.Ra.



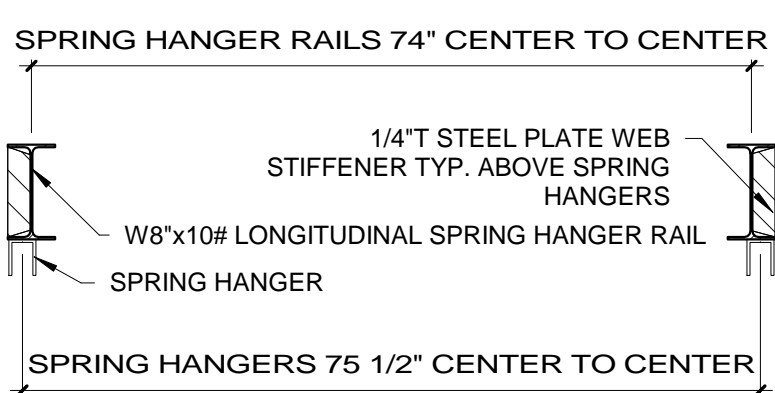
1 Frame Plan
1/4" = 1'-0"



SECTION B-B



SECTION C-C



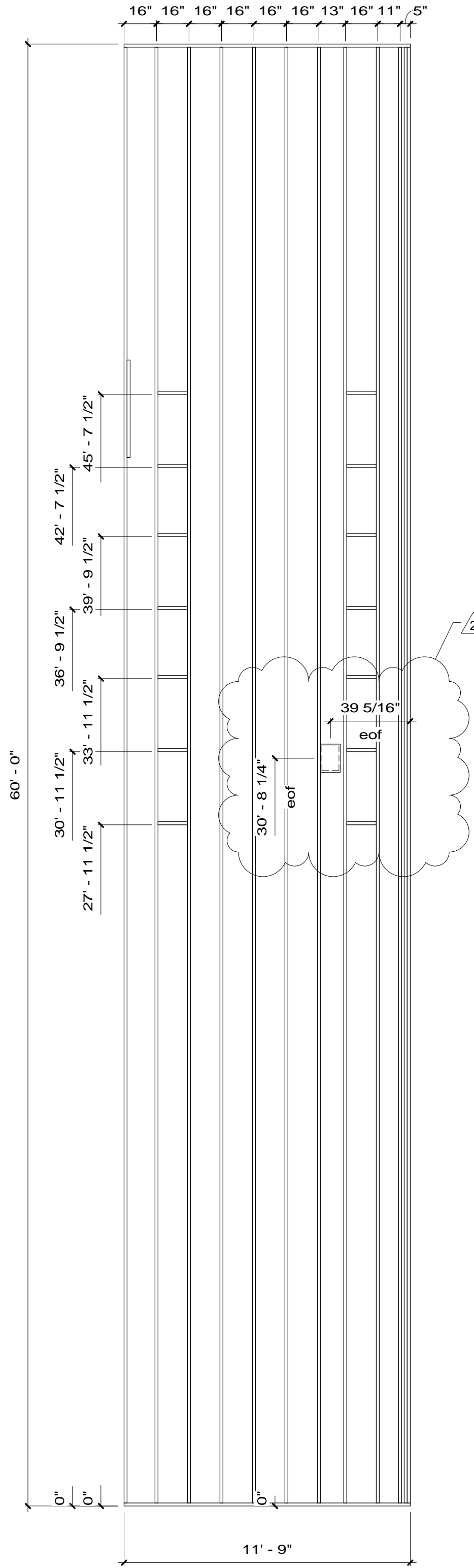
SPRING HANGER DETAIL

2 Frame Details
3/4" = 1'-0"

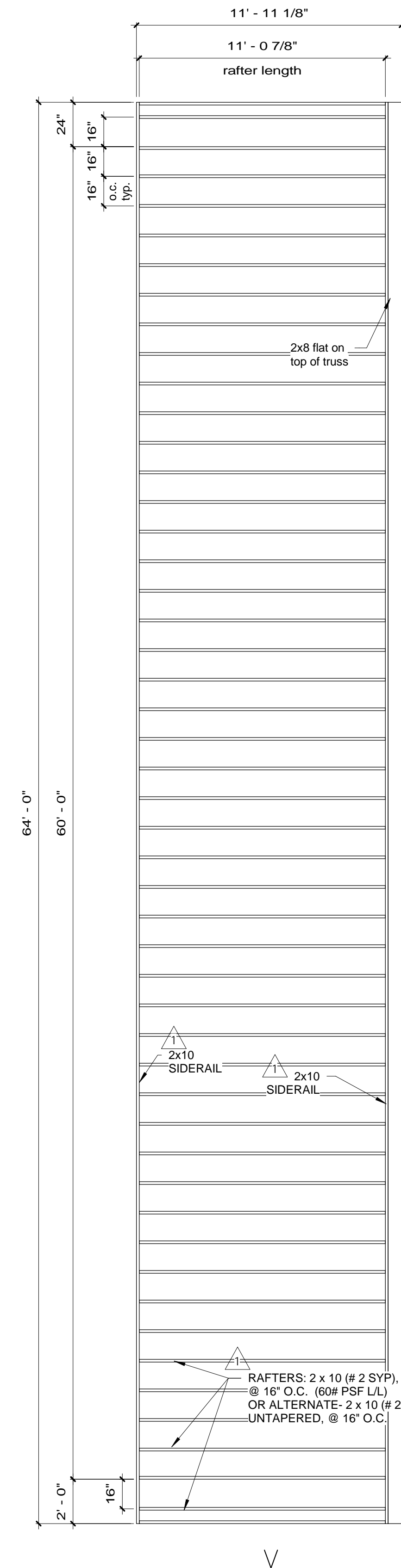
- A-FRAME
1 TYPE: PERIMETER
2 MAIN BEAM: W12 x 14#
3 X-MEMBER: W8 x 10# @ 48" (NOM.) O.C.
3a X-MEMBER: SINGLE W8 x 10# BEAM AS HITCH MOUNT CROSS-MEMBER
NOTE: CROSS-MEMBERS FLUSH W/TOP OF MAIN RAILS.
NOTE: INSTALL 4" x 12" L. BLOCKING SPACER ALONG SIDE WALL MAIN RAILS; DRAWINGS FOR LOCATIONS, WELD TO CROSS-MEMBERS AND TO BOTTOM FLANGE
- SEE INBOARD
- NOTE: SET SPRING HANGER LONGITUDINAL RAILS AT 74" O.C. TO CLEAR TIRES REINFORCE WEB ABOVE HANGER w/ 1/4" PLATE. OR 3/16" ANGLE NOTCH TRANSVERSE WHEELBOX MEMBERS TO PROVIDE TIRE

- CLEARANCE AS REQ'D.
5 HITCH: BOLT-ON, W8 x 10 # RAILS
6 AXLES: FIVE - 75 1/2' SPRING CENTER (92' TRACK), LEADING TANDEM; TRAILING TRIPLE
7 SPRINGS: MULTILEAF, UNDERSLUNG
8 TIRES: 8.00 x 14.5, 12 PLY
9 TIE DOWN: NOTE: PROVIDED & INSTALLED BY OTHERS ON SITE.
- SEE FOUNDATION PLAN FOR TIE DOWN LOCATIONS

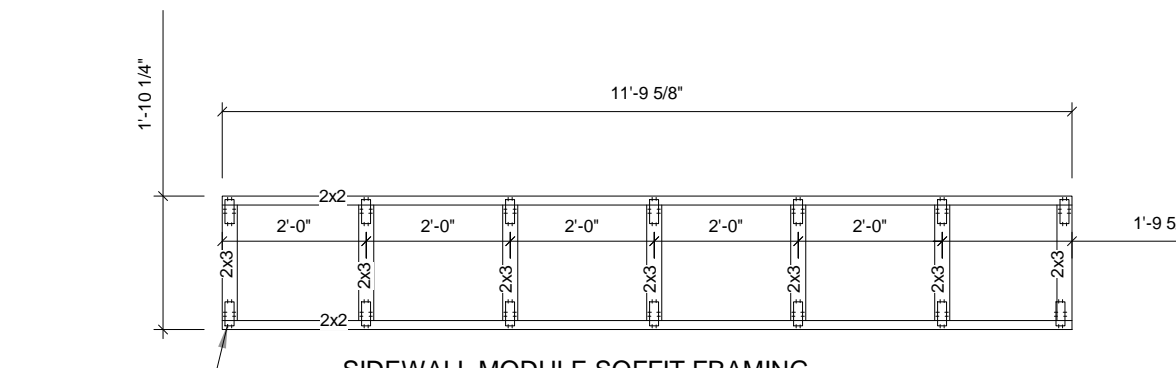
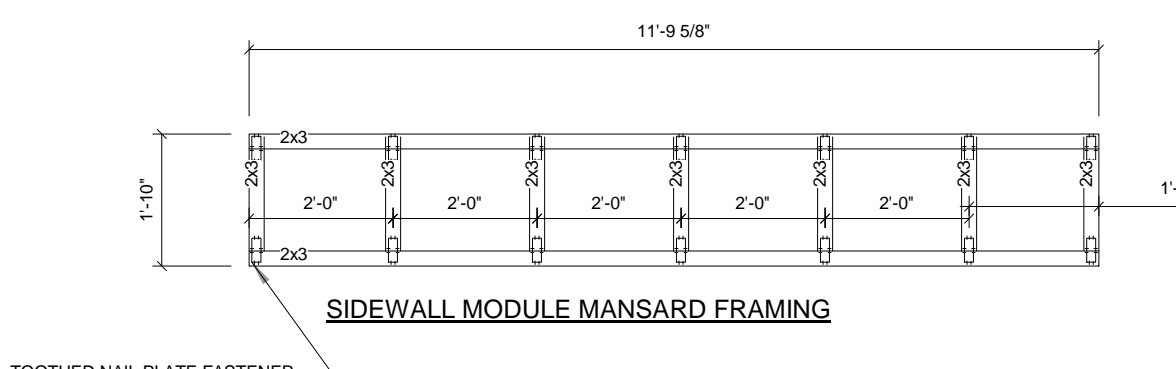
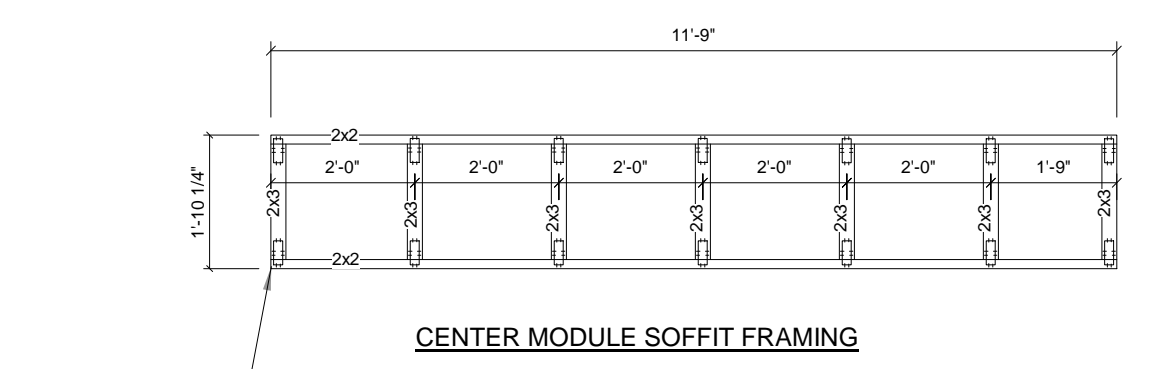
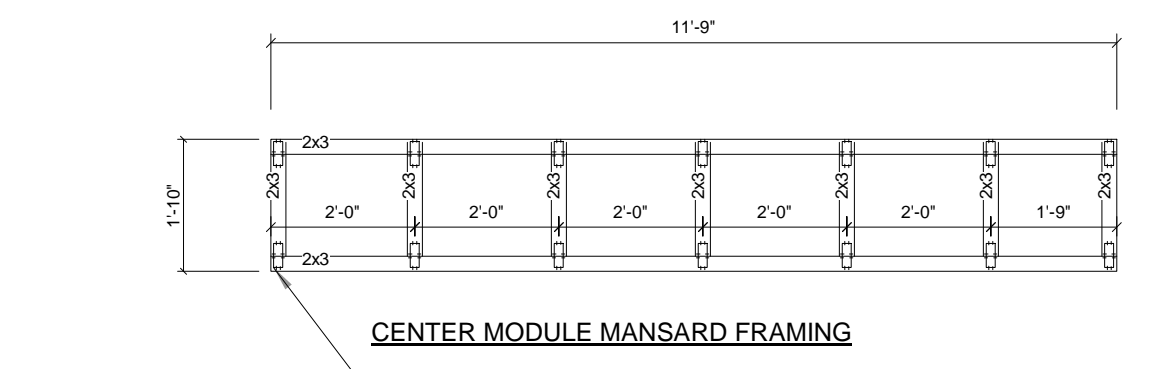
- 10 MISC: 26 GAUGE GALVANIZED BOTTOM BOARD
13 MISC: 1/2" DIA. HOLE 48" O.C. TOP AND BOTT. FLANGE
AT PERIMETER OF BUILDING
16 MISC: I BEAM CLAMPS 15'-0" O.C. MAX. (SHIPLOOSE)
17 MISC: THIS UNIT WILL HAVE STEEL COLUMNS, INTEGRAL
W/ STEEL CHASSIS/FRAME
18 MISC: THIS UNIT WILL HAVE STEEL DIAG. BRACES - SEE DRAWING
19 MISC: STENCIL SERIAL NUMBER ON HITCH & FRONT CROSS-MEMBER
21 UNDER COATING: RUST INHIBITIVE LATEX TYPE PAINT, BLACK: 100% COVERAGE OF STRUCTURAL MEMBERS.



4 Floor Framing Plan
1/4" = 1'-0"



5 Roof Framing Plan
1/4" = 1'-0"



RAFTERS: 2 x 10 (# 2 SYP), UNTAPERED, @ 16" O.C. (60# PSF LL) OR ALTERNATE: 2 x 10 (# 2 SPF), UNTAPERED, @ 16" O.C.

LEFT SIDEWALL

Framing Plans

MGI
USSS TRIPLE WIDE
64'X12' (60'-0"X11'-9" modules)

No.	Description	Date	No.	Description	Date
1	Added detail for deviation per MCI	05/25/2020			
2	Revised location of floor boxes and receptacles per customer	10.01.2020			

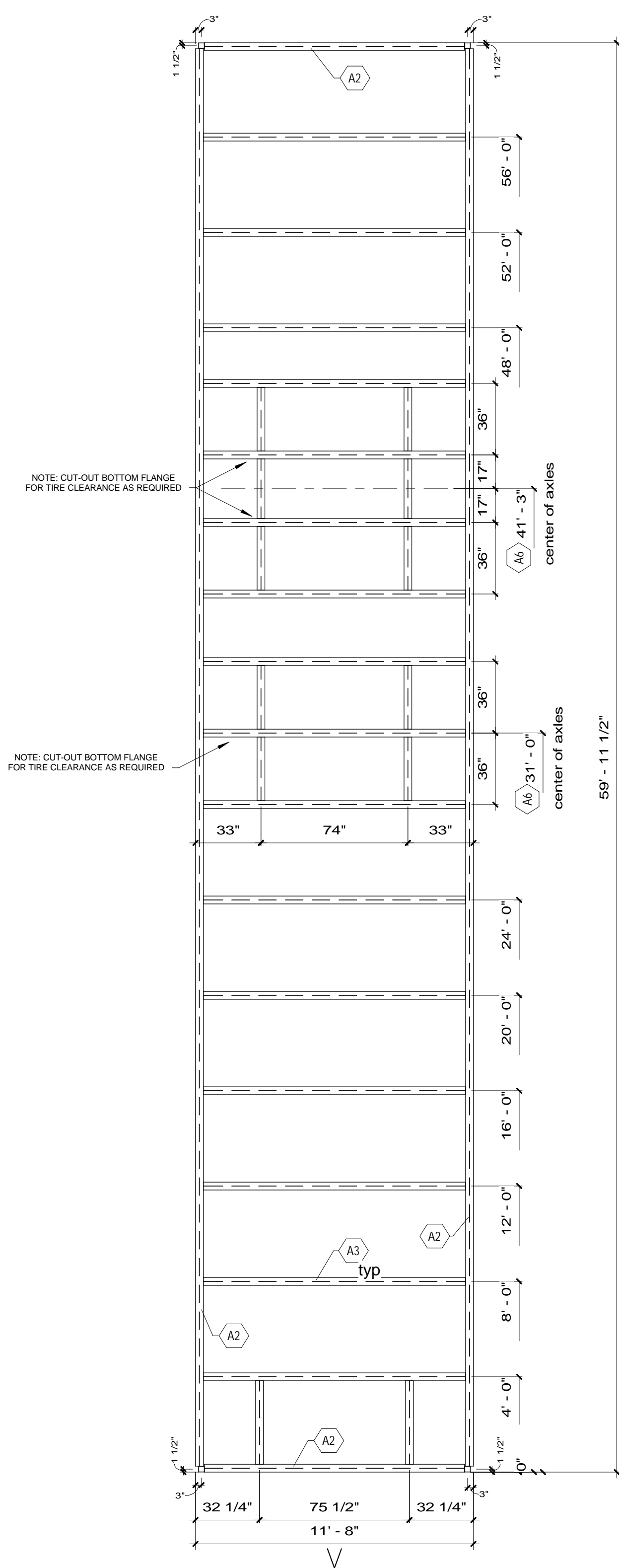
THIS DRAWING AND ALL INFORMATION CONTAINED HEREON IS THE PROPERTY OF WHITLEY MFG. CO., INC. AND IS NOT TO BE REPRODUCED WITHOUT THE EXPRESS PERMISSION OF WHITLEY MFG. CO., INC. WHITLEY MFG. CO., INC. ASSUMES NO RESPONSIBILITY FOR UNAUTHORIZED USE OF THIS DRAWING.



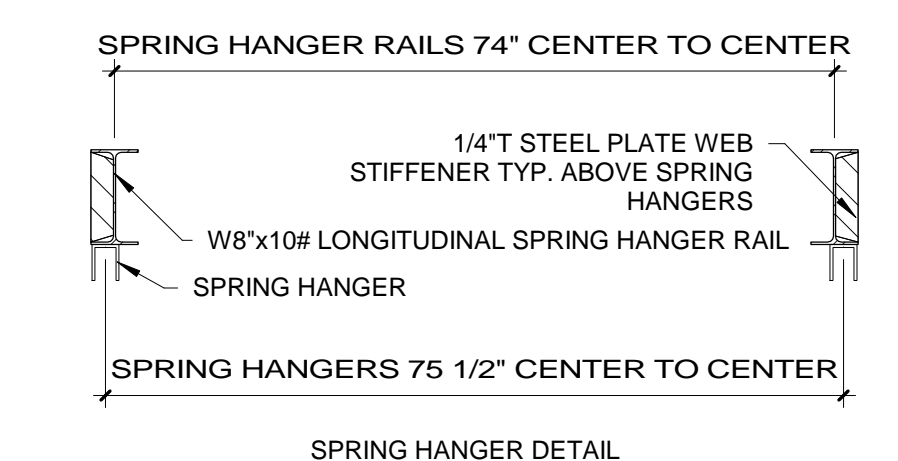
Whitley East, LLC
64 HESS ROAD
LEOLA, PA 17540
PHONE: 717.656.2081
www.whitleyman.com

Drawn By: EP
Checked By: CZ
Rev: 2

Serial No: SEE WORK
Date: 12/22/2020 7:39:20 AM
Scale: As indicated
Page No.
Model No: RP2015REV2
711
Job No. S1.1 L

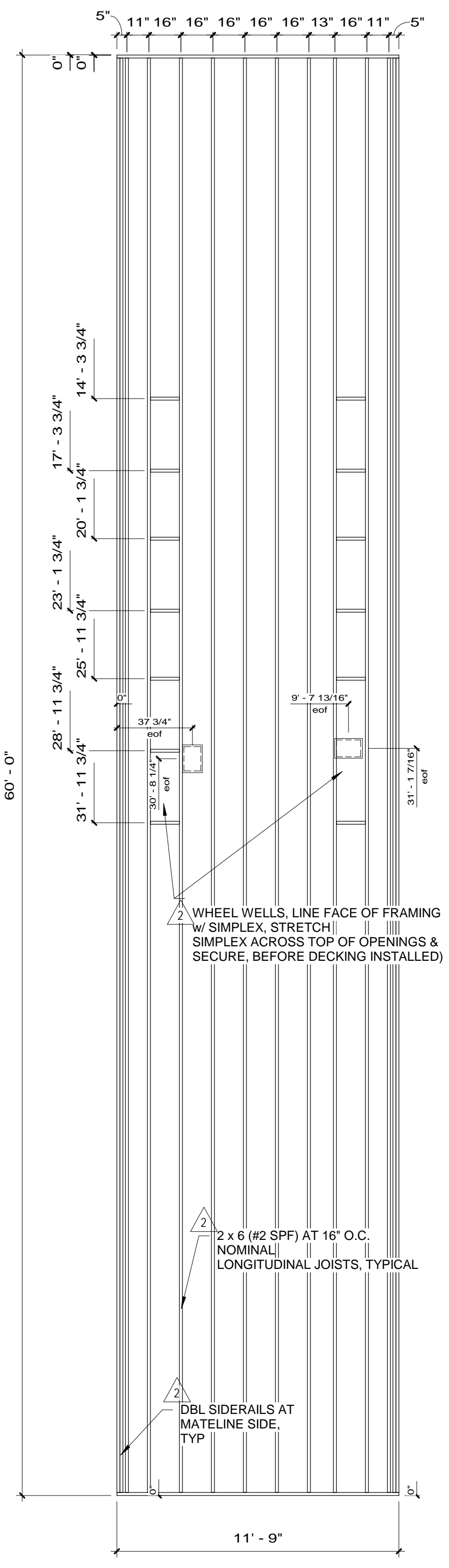


1 Frame Plan
1/4" = 1'-0"

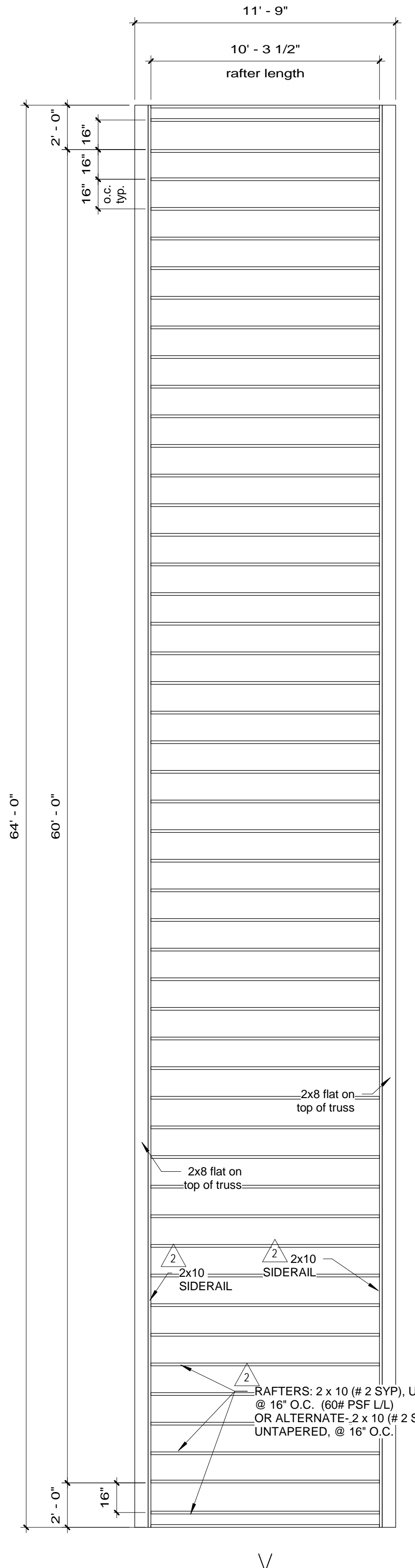


2 Frame Details
3/4" = 1'-0"

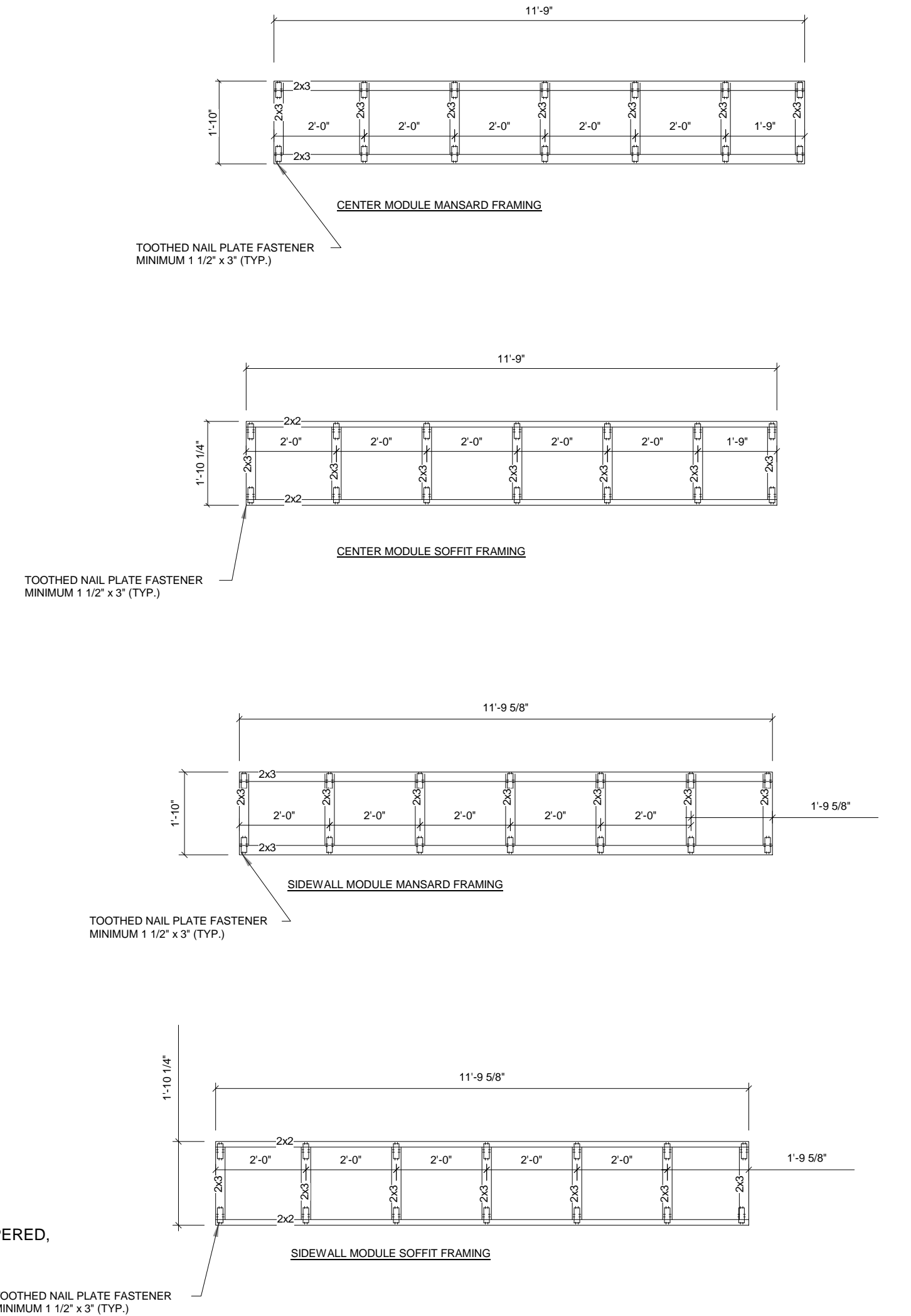
- A-FRAME
1 TYPE: PERIMETER
2 MAIN BEAM: W12x148
3 X-MEMBER: W8x10# @ 48" (NOM.) O.C.
3a X-MEMBER: SINGLE W8"x 10# BEAM AS HITCH MOUNT CROSS-MEMBER
NOTE: CROSS-MEMBERS FLUSH W/TOP OF MAIN RAILS.
NOTE: INSTALL 4"H x 12"L BLOCKING SPACER ALONG SIDE WALL MAIN RAILS; DRAWINGS FOR LOCATIONS, WELD TO CROSS-MEMBERS AND BOTTOM FLANGE
- SEE TO INBOARD
- NOTE: SET SPRING HANGER LONGITUDINAL RAILS AT 74" O.C. TO CLEAR TIRES REINFORCE WEB ABOVE HANGER W/ 1/4" PLATE. OR 3/16" ANGLE NOTCH TRANSVERSE WHEELBOX MEMBERS TO PROVIDE TIRE CLEARANCE AS REQ'D.
- 5 HITCH: BOLT-ON, W8"x10 # RAILS
6 AXLES: FIVE - 75 1/2" SPRING CENTER (92" TRACK), LEADING TANDEM; TRAILING TRIPLE
7 SPRINGS: MULTILEAF, UNDERSLUNG
8 TIRES: 8.00 X 14.5, 12 PLY
9 TIE DOWN: OVER THE FRAME
NOTE: PROVIDED & INSTALLED BY OTHERS ON SITE.
- SEE FOUNDATION PLAN FOR TIE DOWN LOCATIONS
- 10 MISC: 26 GAUGE GALVANIZED BOTTOM BOARD
13 MISC: 1/2"DIA. HOLE 48"O.C. TOP AND BOT. FLANGE
- AT PERIMETER OF BUILDING
16 MISC: I BEAM CLAMPS 15'-0" O.C. MAX. (SHIPLOOSE)
17 MISC: THIS UNIT WILL HAVE STEEL COLUMNS, INTEGRAL W/ STEEL CHASSIS/FRAME
- NOTE: COLUMNS ARE TO BE ASTM A500
THIS UNIT WILL HAVE STEEL DIAG. BRACES - SEE DRAWING
18 MISC: STENCIL SERIAL NUMBER ON HITCH & FRONT CROSS-MEMBER
19 MISC:
- 21 UNDER COATING: RUST INHIBITIVE LATEX TYPE PAINT, BLACK; 100% COVERAGE OF STRUCTURAL MEMBERS.



4 Floor Framing Plan
1/4" = 1'-0"



5 Roof Framing Plan
1/4" = 1'-0"



CENTER MODULE

Framing Plans
MGI
USSS TRIPLE WIDE
64'x12' (60'-0"x11'-9" MODULES)

No.	Description	Date	No.	Description	Date
1	Added electrical devices per MGI	09.25.2020			
2	Revised location of floor boxes and receptacles per customer	10.01.2020			

THIS DRAWING AND ALL INFORMATION CONTAINED HEREON IS THE PROPERTY OF WHITLEY MFG. CO., INC. AND IS NOT TO BE REPRODUCED WITHOUT THE EXPRESS PERMISSION OF WHITLEY MFG. CO., INC. WHITLEY MFG. CO., INC. ASSUMES NO RESPONSIBILITY FOR UNAUTHORIZED USE OF THIS DRAWING.

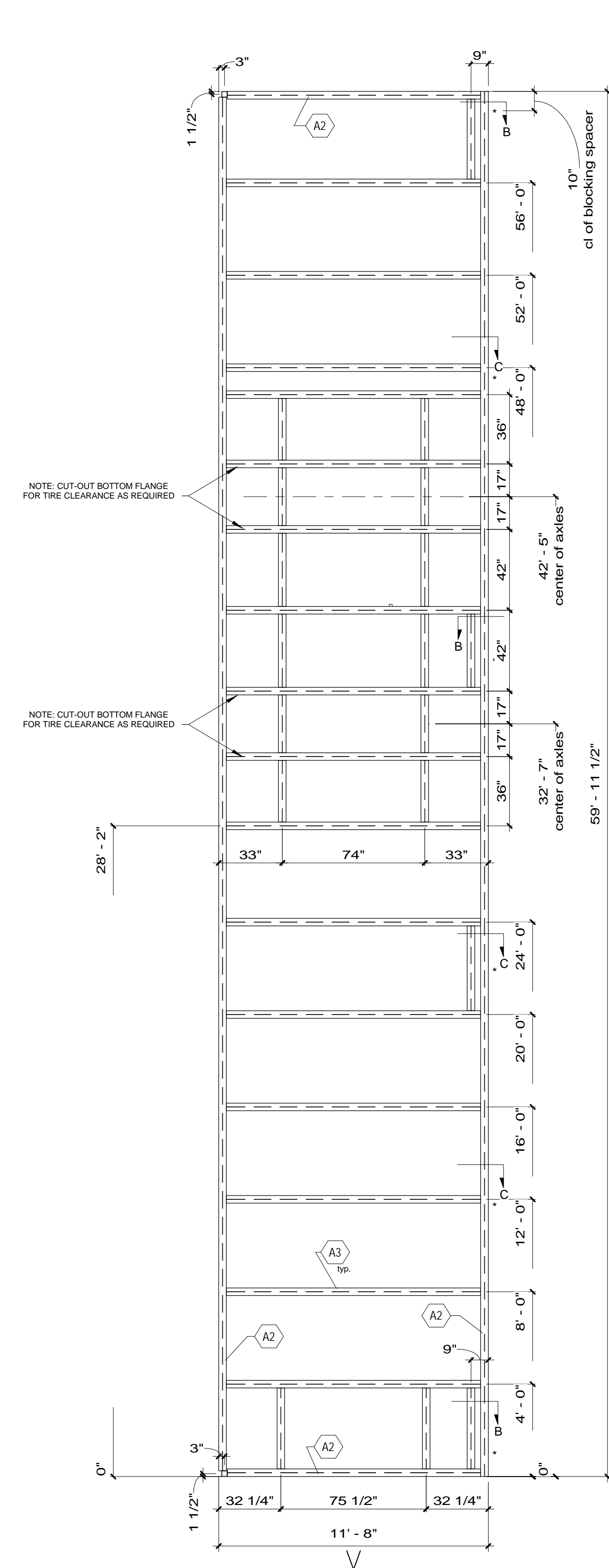


Whitley East, LLC
64 HESS ROAD
LEOLA, PA 17540
PHONE: 717.656.2081
www.whitleyman.com

Drawn By:
Irs-aprvl
Checked By:
LH
Rev:
2

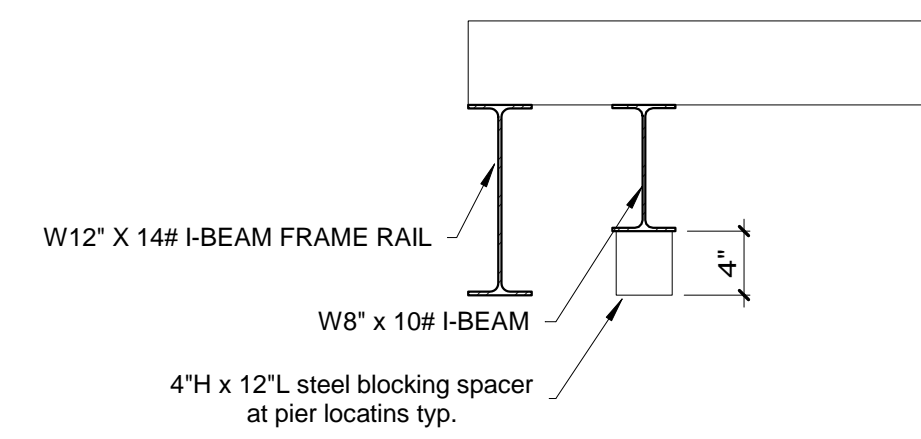
Serial No. 12/22/2020 Date: 7:38:43 AM
see work order
Quote No. RP 2015 REV3 As indicated
Model No. 7111 Page No.
Job No. S1.1c

12/22/2020 7:38:43 AM

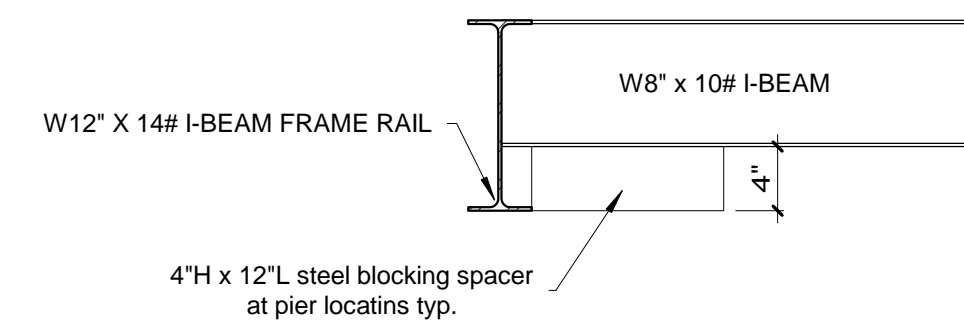


1 Frame Floor Plan
1/4" = 1'-0"

- A-FRAME**
- 1 TYPE: PERIMETER
 - 2 MAIN BEAM: W12x14#
 - 3 X-MEMBER: W8x10#, @ 48" (NOM.) O.C.
 - 3a X-MEMBER: SINGLE W8x10# BEAM AS HITCH MOUNT CROSS-MEMBER
 - NOTE: CROSS-MEMBERS FLUSH W/TOP OF MAIN RAILS.
 - NOTE: INSTALL 4"x12" L BLOCKING SPACER ALONG SIDE WALL MAIN RAILS: SEE DRAWINGS FOR LOCATIONS, WELD TO CROSS-MEMBERS AND TO INBOARD BOTTOM FLANGE
 - NOTE: SET SPRING HANGER LONGITUDINAL RAILS AT 74" O.C. TO CLEAR TIRES REINFORCE WEB ABOVE HANGER W/ 1/4" PLATE, OR 3/16" ANGLE NOTCH WHEELBOX MEMBERS TO PROVIDE TIRE CLEARANCE AS REQD.
 - 5 HITCH: BOLT-ON, W8x10# RAILS
 - 6a AXLES: SIX - 75 1/2" SPRING CENTER (92" TRACK), (2) TRIPLE
 - 7 SPRINGS: MULTILEAF, UNDERSLUNG
 - 8 TIRES: 8.00 X 14.5, 12 PLY
 - 9 TIE DOWN: OVER THE FRAME
 - NOTE: PROVIDED & INSTALLED BY OTHERS ON SITE. SEE FOUNDATION PLAN FOR TIE DOWN LOCATIONS
 - 10 MISC: 26 GAUGE GALVANIZED BOTTOM BOARD
 - 13 MISC: 1/2" DIA. HOLE 48" O.C. TOP AND BOTT. FLANGE AT PERIMETER OF BUILDING
 - 16 MISC: I-BEAM CLAMPS 15'-0" O.C. MAX. (SHIPLOOSE)
 - 17 MISC: THIS UNIT WILL HAVE STEEL COLUMNS, INTEGRAL W/ STEEL CHASSIS/FRAME
 - NOTE: COLUMNS ARE TO BE ASTM A500
 - 18 MISC: THIS UNIT WILL HAVE STEEL DIAG. BRACES - SEE DRAWING
 - 19 MISC: STENCIL SERIAL NUMBER ON HITCH & FRONT CROSS-MEMBER
 - 21 UNDER COATING: RUST INHIBITIVE LATEX TYPE PAINT, BLACK: 100% COVERAGE OF STRUCTURAL MEMBERS.

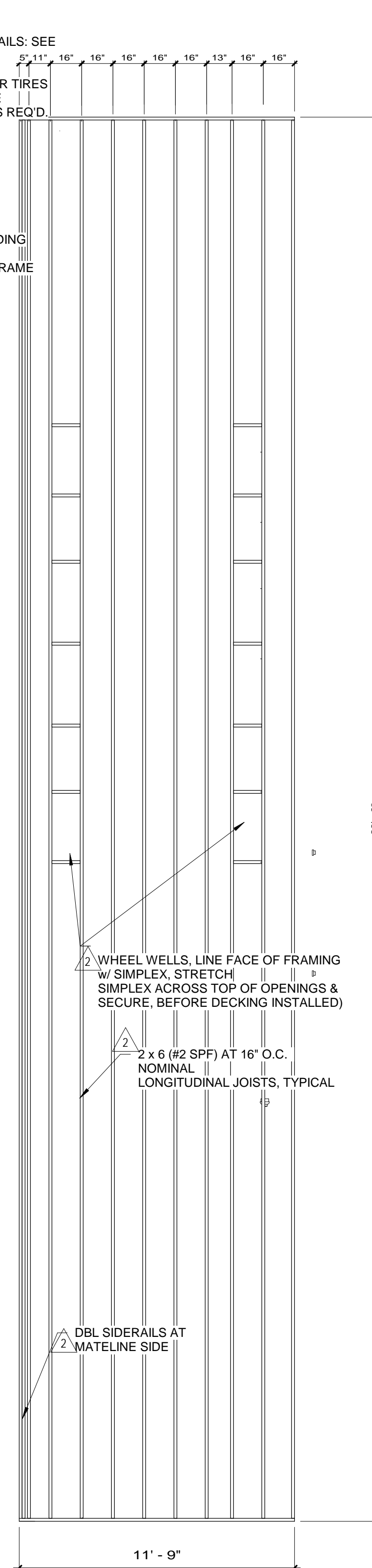


SECTION B-B

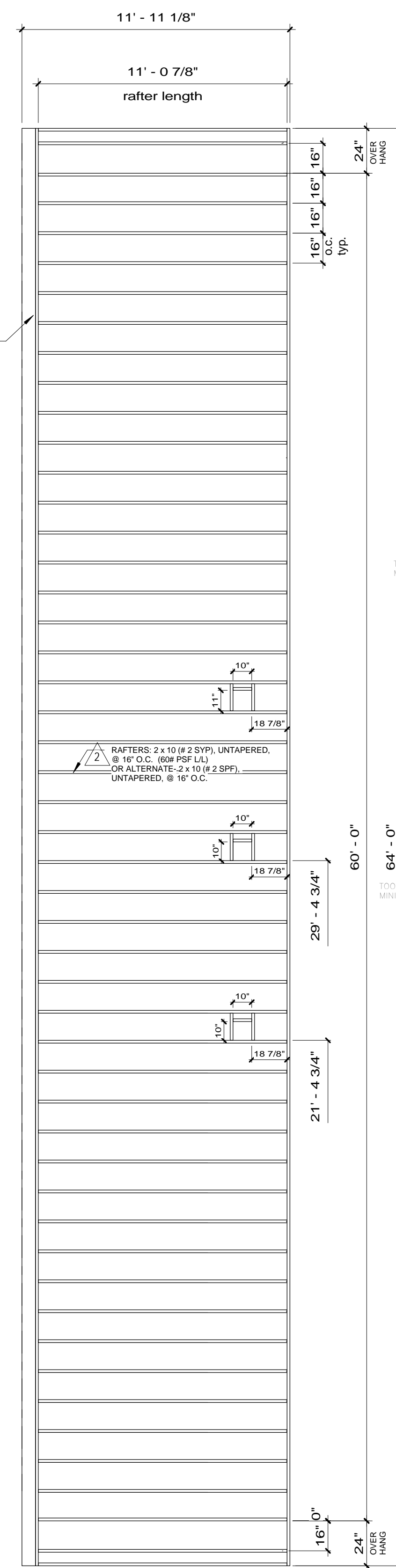


SECTION C-C

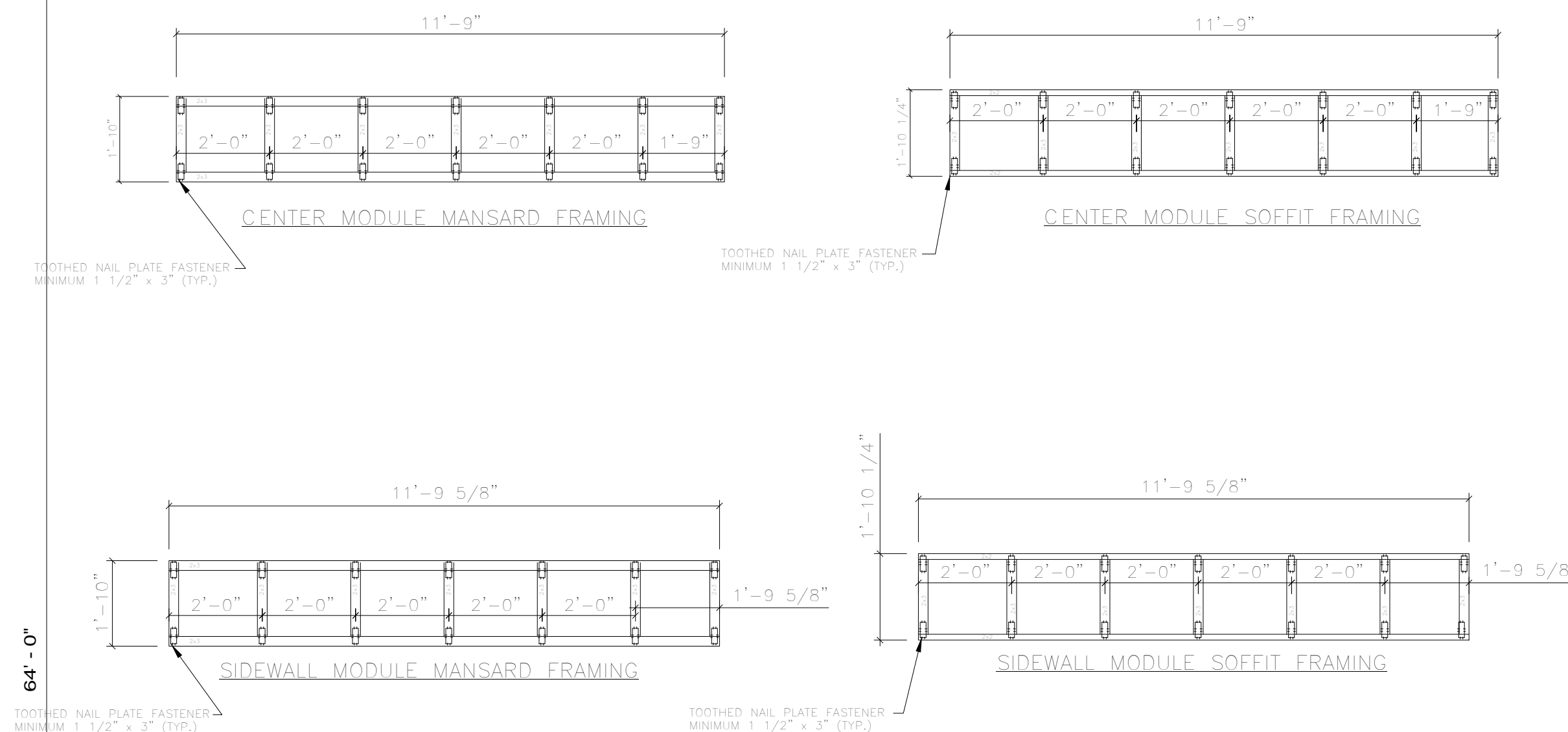
TYP. AT CROSS MEMBERS ABOVE PIER LOCATIONS



2 Floor Framing Plan
1/4" = 1'-0"



3 Roof Framing Plan
1/4" = 1'-0"



4 framing plans
3/16" = 1'-0"

RIGHT SIDEWALL- SINGLE OCCUPANT RESTROOM OPTION

No.	Description	Date	No.	Description	Date
1	REVISED FRAME TO INCLUDE SIXTH AXLE	3-31-15			
2	revised per third party deviation	Irs 6-15-15			

THIS DRAWING AND ALL INFORMATION CONTAINED HEREON IS THE PROPERTY OF WHITLEY MFG. CO., INC. AND IS NOT TO BE REPRODUCED WITHOUT THE EXPRESS PERMISSION OF WHITLEY MFG. CO., INC. WHITLEY MFG. CO., INC. ASSUMES NO RESPONSIBILITY FOR UNAUTHORIZED USE OF THIS DRAWING.



Whitley East, LLC
64 HESS ROAD
LEOLA, PA 17540
PHONE: 717.656.2081
www.whitleyman.com

Drawn By:	Irs- sub
Checked By:	PG
Rev:	2

FRAMING PLANS
MGI
USSS TRIPLE WIDE
(2) SETS OF (3) 12X60 MODULES

Serial No.	2312-13	Date:	12/22/2020
Quote No.		Scale:	As indicated
Model No.	7111	Page No.	
Job No.	2020-034-WP		

S1.1Ra

12/22/2020 7:38:07 AM