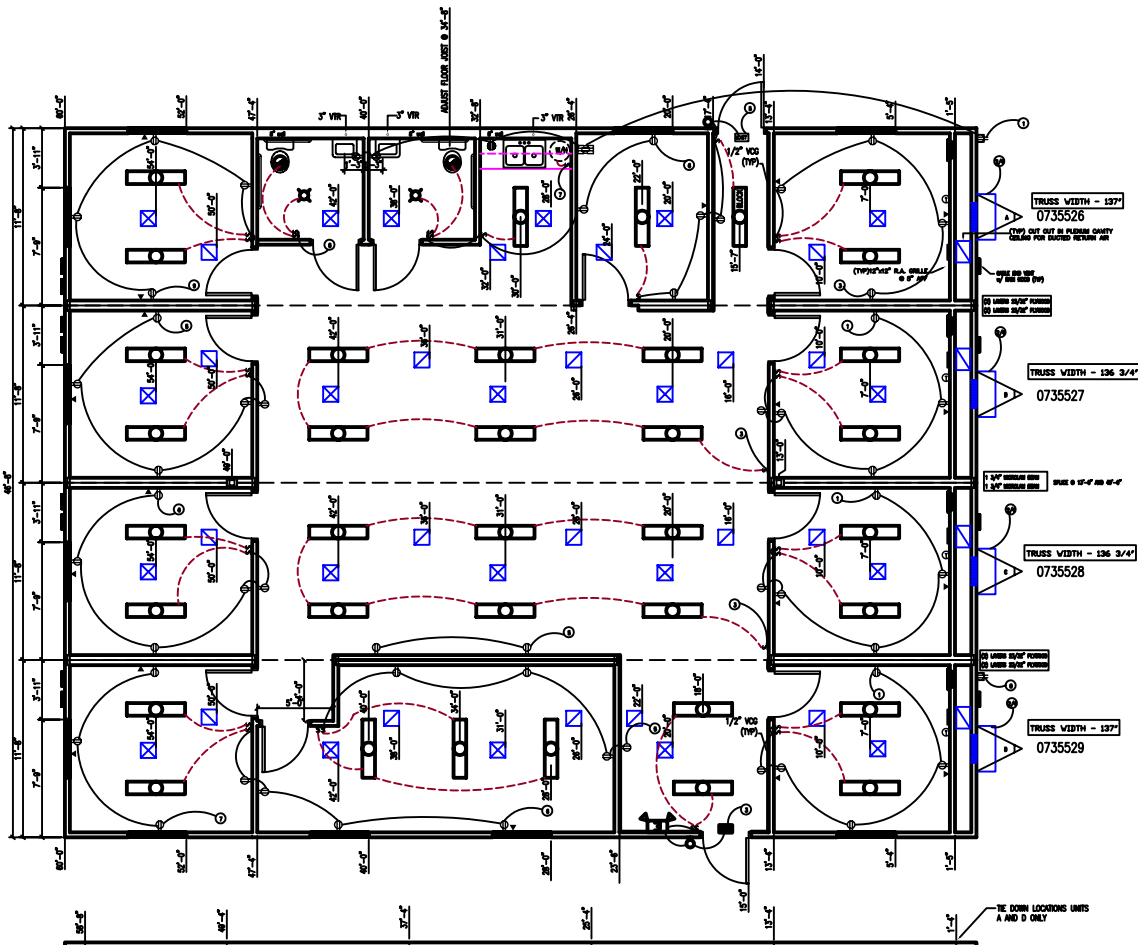


FRAME & FLOOR	WALLS, WINDOWS, DOORS	ELECTRICAL SGL PHASE	PLUMBING	ROOF	EXTERIOR	A/C & HEAT
AXLES: (4) see brake HITCH: STD JOISTS: 2"x6" @ 16" o.c.	WALLS: 2"x4" studs w/ dbl top plates PLUMBING WALL: 2"x6" @ 24" o.c. w/ restrooms, base cab PLYWOOD BLOCKING porch lights, thermostats, sp. holder grab-bars, lav / base cabinet	ENT. PANEL: (1) 100 amp LIGHTS: (3) 4" 2-tube w/ LINE (2) exterior weather proof porch light w/ blocking & photo-cut (2) 100 CFM VENT FAN (2) 40W light (2) 30W LED receptacle @ 4" AFF (1) dual head emergency lights w/ battery back up @ 8" AFF TO THE BOTTOM (2) 100 V EXTERIOR VP GROUND FAULT RECEPT CABLE IN USE	TYPE: cpvc supply lines PVC WASTE STUB-OUTS WALL HUNG LAV: (2) w/ blocking VANITY: N/A MIRROR: (2) COMMODE: (2) handicap w/ OFFSET FLANGE URINAL: SHOWER: N/A SPECIAL: WATER HEATER: (1) 4 GALLON w/ PWH WATER HEATER STRAPPED DOWN FOR SHIPPING GRAB BARS: (2) 36" @ 48" 30" AFF TO CENTER OF GRAB-BARS STUB SUPPLY LINES THRU FLOOR (2) TUBLEY PAPER HOLDER IN 2" x 2" HOLE FROM BY OF 2" HOLE FROM BY OF 2" HOLE FROM BY	45 MIL BLACK RUBBER TRUSS: 805,436 @ 24" o.c. TRANSVERSE: (2) SEE PRINT FOR WIDTH RIDGE BEAM: SEE PRINT CEILING: 1/2" sheetrock THICK DUCT INSULATION: 15" R-19 DECKING: 7/8" FR PANEL TIE-DOWNS: #4 ATTIC VENTILATION: SEE PRINT CD 100 CFM VENT FAN CD 100 CFM VENT FAN	SHEATHING: 1/2" sheetrock w/ corners & 2" o.c. sheetrock ENDWALLS GET 1/2" THERMOPLY/TOP OF TRUSS TO BOTTOM OF JOIST BOT. TRIM: 200 ALUM. (9009 RED) SIDING: 200 ALUMINUM CL. VENT. TOP TRIM: 200 ALUM. ALUMINUM HANDRAIL (9009 RED) RETURN AIR: SEE PRINT THERMOSTAT: 80000	HVAC: (4) VAS70-410 @ 60 amp @ 66 wire HEAT: 100w DUCT: THICK DUCT 17"X17" Fiberglass supply 17"X17" Fiberglass RETURN

(1) OUTRIGGER FRAME w/ crossmembers & outriggers @ 48" o.c.  
 SHORT BONDING STRAP  
 ADJUST FLOOR JOIST @ 34"-0" with "W"  
 RUN HVAC WIRE UNDER UNIT TO PANEL BOX  
 STRAPS @ 16" O.C.  
 3/4" PLYWOOD BEHIND ALL PLUMBING FIXTURES  
 (1) (18) WALL MT. J-BOKES w/ STUBOUT THRU FLOOR  
 (1) (1) W.P. HEAT TAPE RECEPT UNDER FLOOR  
 AC/CABLE THRU-OUT  
 RUN HVAC WIRE UNDER UNIT TO PANEL BOX  
 TRUSS WIDTH - 137" 0735526  
 TRUSS WIDTH - 136 3/4" 0735527  
 TRUSS WIDTH - 136 3/4" 0735528  
 TRUSS WIDTH - 137" 0735529  
 TE DOWN LOCATIONS UNITS A AND D ONLY  
 28 1/2"x14 1/2" R.A. OPENING



SCALE: 1/4" = 1'-0"	OCCUPANCY GROUP: Business
DRAWN BY: BARBARA HICKS	CODES: NEC/NCBC/IBC
CHECKED BY:	SEALS: MBI/VA/NC/SC PSI/RADCO
00/00/00	APPRVD. BY:
	DECALS: ACTON
	BOX SIZE: 48'X60'
	SERIAL NO: SEE HITCH END
	QUOTE NO: CB-5528 GL

# MODULAR GENIUS

SMART BUILDING



The above photos are representative of "business / commercial" new modular buildings offered by Modular Genius. Please refer to the specifications and floor plans for details. Visit [www.modulargenius.com](http://www.modulargenius.com) for pricing or contact us at 888-420-1113.

[www.modulargenius.com](http://www.modulargenius.com)  
888-420-1113