

FRAME & FLOOR	WALLS, WINDOWS, DOORS	ELECTRICAL	PLUMBING	ROOF	EXTERIOR	A/C & HEAT	
AXLES: (2) BRAKE	WALLS: 2"x4" studs w/ dbl top plates	ENT. PANEL: (1) 100 amp	TYPE: cpvc supply lines	2x roof rails	SHEATHING: 1/8" THERMOPLY	HVAC: (1) VA302-A10	
HITCH: STD	PLYMBOG WALL: 2"x8" at restrooms @24" O.C.	LIGHTS: (7) 4' 2-tube w/ LENS	HANDICAP (1)	TRUSS: #735101 (20-24-20) @ 24" O.C.	CORNER BRACE & 25' O.C.	60 amp #6 wire	
JOISTS: 2"x6' @ 16' o.c.	PLYWOOD SUPPORT: porch lights, thermostats, tip holder	(ELECTRONIC BALLAST)	WALL HUNG LAV: (1) w/ blocking	BOX 137*	7/16" OSB ON ENDWALLS *	HEAT: 10kw	
INSULATION: 11KF	GRAB BARS, LAV AND CABINETS	(2) exterior weather proof porch light	VANITY: N/A		BOT. TRIM: ALUMINUM	DUCT: 17"x5" Fiberglass supply	
DECKING: 23/32" T&G ADVANTECH	COVERING: 1/2" HAMPTON GREY vinyl covered gypsum	(1) 100 cfm vent fan	MIRROR: (1)	RIDGE BEAM: N/A	#509 RED	THICK DUCT	
COVERING: 1/8" BLDCK TILE THRU OUT	EXT. INSUL: 11KF	(2) Std 120v recept 44" AFF	COMMODE: (1) HANDICAP	CEILING: 1/2" SEASPRAY	INSULATION: 19 KF	#115 COLONIAL WHITE	RETURN AIR: WALL GRILLE
COLOR # 51839	INT. DOORS: (3) 36"x80" 6-panel w/ LEVER	(2) Lighted exit signs w/ battery back-up	SPECIAL: N/A	SHOWER: N/A	WATER HEATER: (1) 2 1/2 GALLON	DECKING: 7/16" FR PANEL	TOP TRIM: ALUMINUM
	INT. DOORS: (3) 36"x80" 6-panel w/ LEVER	(1) 110 v EXTERIOR W/P GROUND	GRAB BARS: (1) 36" (1) 42" @ 33" AFF	TIE-DOWNS: SEE PRINT	INSULATION: (USE 8d NAILS)	ATTIC VENTILATION: SEE PRINT	#509 RED
	WINDOWS: (7) 46"x27" H/S ML/CL	(1) 100 v.P. GROUND FAULT RECEPT UNDER UNIT.	TO CENTER LINE				(NO MANSARD)
		(1) 120v Ded recept for water heater (64" A.F.F.)	STUB SUPPLY LINE THRU FLOOR CONNECT & INSULATED				
			(1) TOILET PAPER HOLDER				
			TEE HOT & COLD STUBS UNDER UNIT FOR FUTURE BAR SINK				

(1) 100 v.P. GROUND FAULT RECEPT UNDER UNIT.

STRAPS 16" D.C.

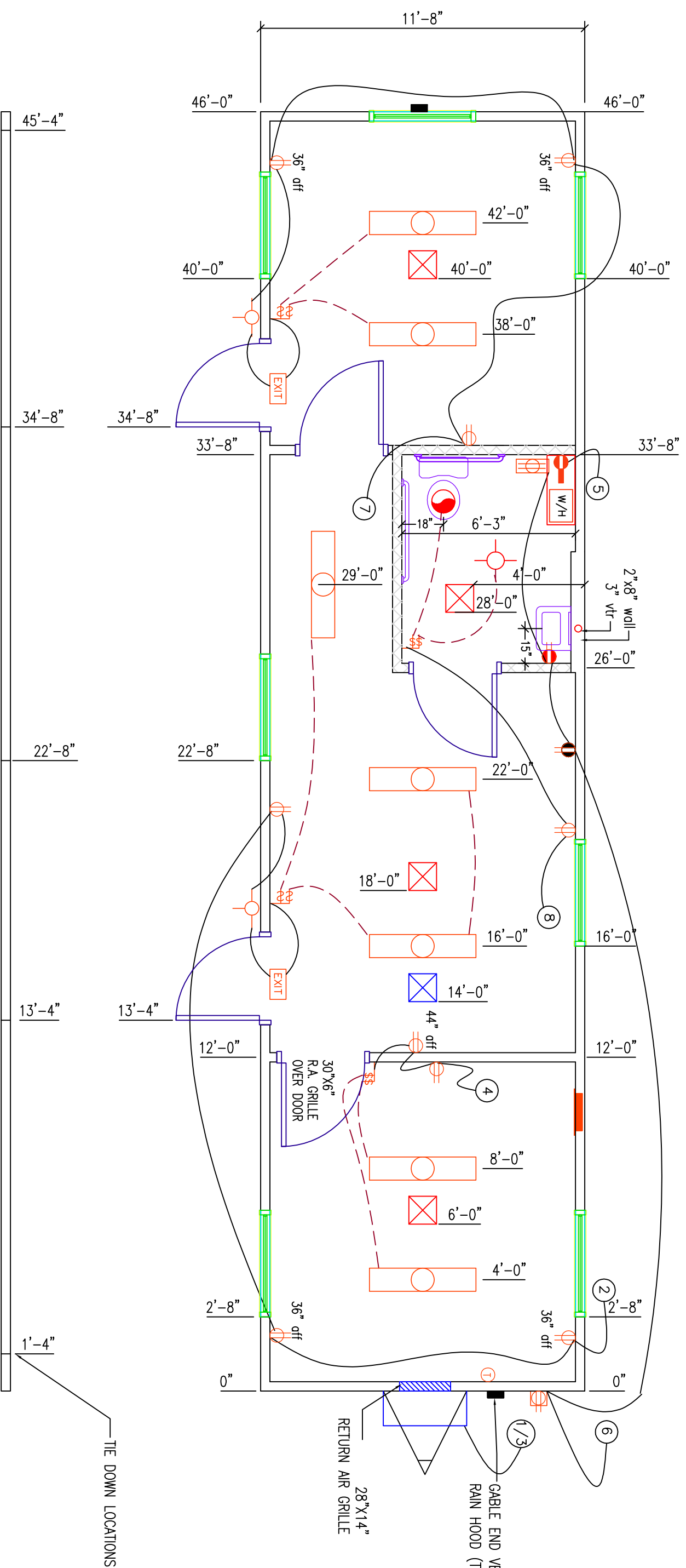
DBL EXTERIOR STUDS @ 48" O.C. ON ENDWALLS

3/4" PLYWOOD BEHIND ALL PLUMBING FIXTURES

(1) 100 cfm vent fan
BRANCH DUCTED SUPPLY INTO R.R.
STRAPS 16" D.C.

STRAPS 16" D.C.

28 1/2"x14 1/2" RA. OPENING



MODULAR GENIUS

SMART BUILDING

1-888-420-1113

www.modulargenius.com

COMPANY: STOCK	SCALE: 1/4" = 1'-0"	OCCUPANCY GROUP: Business
DATE: 08/09/07	REVISION: 00/00/00	BOX SIZE: 12'x46'
		SERIAL NO: SEE ABOVE
		QUOTE NO: STOCK 12X46 BS

- 0736093 0736098
- 0736094 0736099
- 0736095 0736100
- 0736096 0736101
- 0736097 0736102

MODULAR GENIUS

SMART BUILDING



The above photos are representative of "business / commercial" new modular buildings offered by Modular Genius. Please refer to the specifications and floor plans for details. Visit www.modulargenius.com for pricing or contact us at 888-420-1113.

www.modulargenius.com
888-420-1113