

FRAME & FLOOR	WALLS, WINDOWS, DOORS	ELECTRICAL	PLUMBING	ROOF	EXTERIOR	A/C & HEAT
AXLES: (2) BEAM: 8" DET XXX	WALLS: 2"x4" STUDS W/ DOUBLE TOP PLATES	ENT. PANEL: (1) 100 AMP	TYPE: CPVC SUPPLY LINES	ROOF 2x ROOF RAIS	SHEATHING: 1/8" THERMOPLY	HVAC: (1) WA242-A10
HITCH: STD	PLUMBING WALL: 2"x8" @ 24" O.C. PER PLAN	LIGHTS: (3) 4' 2-TUBE W/ LENS	(ELECTRONIC BALLAST)	TRUSS: #752001 (20-24-20) @ 24" O.C.	CORNER BRACE & 25' D.C.	60 AMP #6 WJBE
JOISTS: 2"x6" @ 16" o.c.	PLYWOOD SUPPORT: PORCH LIGHTS, T-STAT, TP HOLDER	(2) EXTERIOR W.P. PORCH LIGHT W/ PHOTOCELL	WALL HUNG LAV: (1) W/ BLOCKING	BOX 117'	7/16" OSB ON END WALLS *	HEAT: 10kw
INSULATION: R-11 KF	COVERING: 1/2" VINYL COVERED GYPSUM (HAMPION GRAY)	(1) 100 CFM VENT FAN	VANITY: (1) MIRROR: (1)	MIRROR: (1)	BDT. TRIM: #509 RED	DUCT:
DECKING: 23/32" T&G ADVANTECH	EXT. INSUL.: R-11 KF	(1) DRUM LIGHT	COMMODO: (1) HANDICAP	SHOWER: N/A	INSULATION: 024 ALUMINUM	17"x5" FIBERGLASS SUPPLY
COVERING: 1/8" BLOCK TILE THRU OUT	EXT. DOORS: (2) 36"x80" HD. ALUM W/10" V.B./ LEVER HDW & DRIP CAP	(2) LIGHTED EXIT SIGNS W/ BATTERY BACKUP	SPECIAL: N/A	WATER HEATER: (1) 2 1/2 GALLON IN OVERHEAD CABINET IN RESTROOM	DECKING: 7/16" FR PANEL (USE 8D NAILS)	RETURN AIR: WALL GRILLE @ HVAC SEE PRINT
COLOR # 51839 FORTRESS WHITE	INT. DOORS: (2) 36"x80" 6-PANEL W/ LEVER HDW	(1) 110 v EXTERIOR W/P GROUND FAULT RECEPT (WHILE IN USE)	GRAB BARS: (1) 36" (1) 42" @ 33" AFF TO CENTER LINE	TIE-DOWNS: SEE PRINT	DECALS: NONE	THERMOSTAT: #2001
OUTRIGGERS @ 48" O.C.	WINDOWS: (5) 46"x27" H/S ML/CL W/ MINI-BLINDS			ATTIC VENTILATION: SEE PRINT		

STRAPS 16" D.C.

3/4" PLYWOOD BEHIND ALL PLUMBING FIXTURES

- (1) 120V DEDICATED W/H RECEPT @ 64" AFF
- (2) PHONE JACK J-BOX W/ CONDUIT THRU FLOOR

STUB SUPPLY LINE THRU FLOOR (CONNECT & INSULATE)
(1) TOILET PAPER HOLDER

(1) 100 CFM VENT FAN

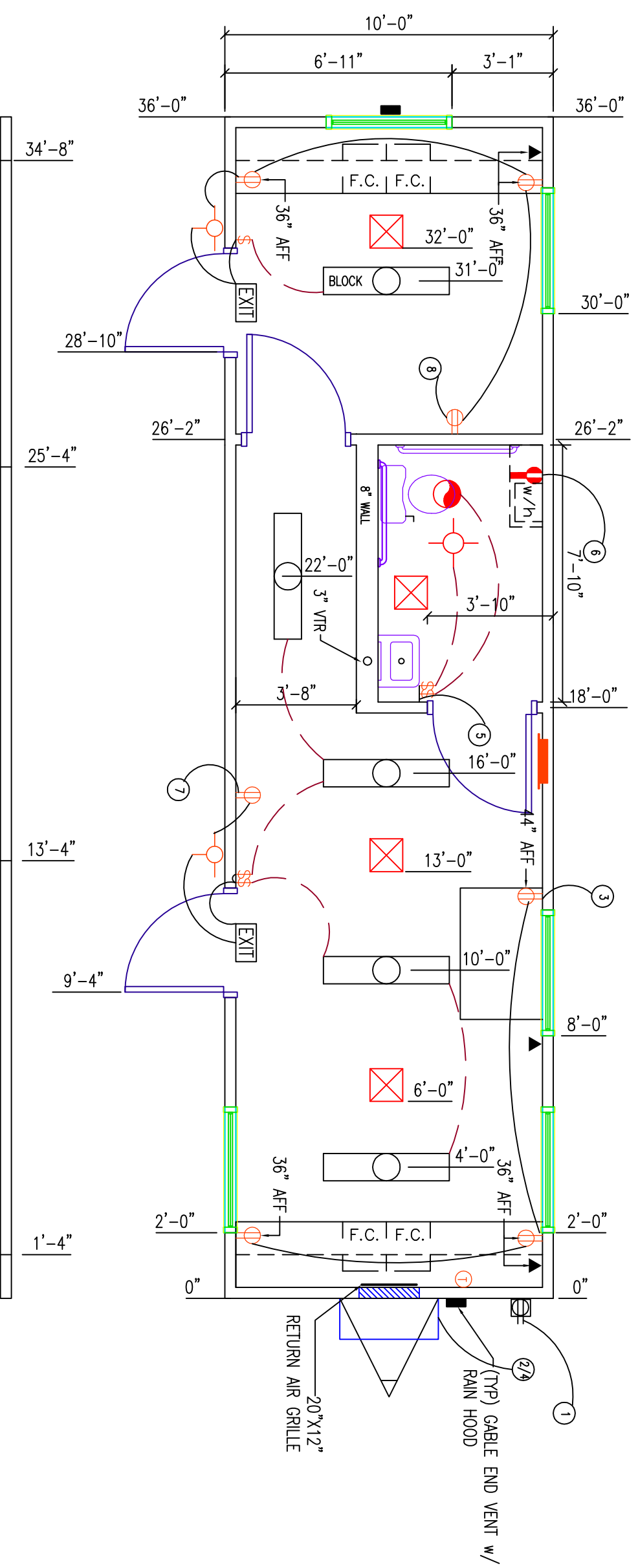
BRANCH DUCTED SUPPLY IN R.R.

STRAPS 16" D.C.

* CONTINUOUS FROM TOP OF TRUSS TOP CHORD TO 3/4" MINIMUM BELOW TOP OF RIM JOIST WITH ALL SHEATHING EDGES SUPPORTED BY 2"x4" LUMBER #2 S.P.F. OR BETTER FASTENED WITH 8d NAILS 4" O.C. @ EDGES AND 12" O.C. IN THE FIELD

- (2) 111 3/4"x24" DESK WITH (2) FILE CABINETS
- (1) 111 3/4"x12" OVERHEAD SHELF EACH END
- (1) 48"x30" FOLDING PLAN TABLE

R.A. OPENING
20 1/2"x12 1/2"



- 0736041
- 0736042
- 0736043
- 0736044
- 0736045



SMART BUILDING

1-888-420-1113

www.modulargenius.com

COMPANY: STOCK	SCALE: 1/4" = 1'-0"	OCCUPANCY GROUP: BUSINESS
DATE: 01/04/07	REVISIONS: REVISED:	BOX SIZE: 10X36
		SERIAL NO: SEE ABOVE
		QUOTE NO: STOCK 10X36 BS

MODULAR GENIUS

SMART BUILDING



The above photos are representative of "business / commercial" new modular buildings offered by Modular Genius. Please refer to the specifications and floor plans for details. Visit www.modulargenius.com for pricing or contact us at 888-420-1113.

www.modulargenius.com
888-420-1113